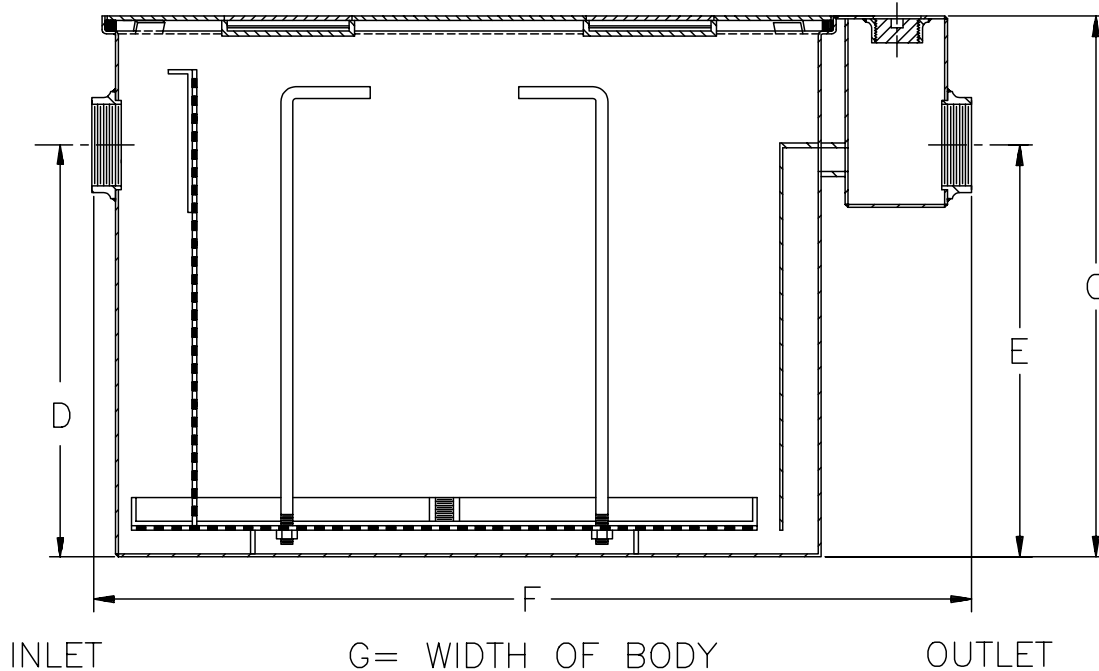




# Z-1172-91 LARGE CAPACITY GREASE INTERCEPTOR

TAG \_\_\_\_\_

Dimensional Data (inches and [ mm ]) are Subject to Manufacturing Tolerances and Change Without Notice



Size	Inlet/Outlet Size**	Flow Rate G.P.M. [L]	Capacity		No. of Covers	Approx. Wt. Lbs. [kg]	Dimensions in Inches			
			Water Gal. [L]	Grease Lbs. [kg]			C	D/E	F	G
1900	6 [150]	500 [1890]	1440 [5443]	1000 [454]	3	2857 [1297]	98 5/8 [2505]	93 [2362]	84 [2134]	48 [1219]

**ENGINEERING SPECIFICATION:** ZURN Z-1172-91 Large capacity Acid Resistant Coated interior and exterior fabricated steel grease interceptor, rated at \_\_\_ GPM and \_\_\_ Lbs. grease capacity, with internal air relief by-pass, bronze cleanout plug and visible double wall trap seal with removable pressure equalizing/flow diffusing baffle and sediment tray. Gasketed non-skid secured cover with covered recessed lift handle and enzyme port having bronze plug, complete with flow control fitting. Regularly furnished with inlet and outlet in high position.

**OPTIONS** (Check/specify appropriate options)

**PREFIXES**

\_\_\_ Z- Acid Resistant Coated Fabricated Steel\*

**SUFFIXES**

- \_\_\_ -E Acid Resistant Coated Interior and exterior fabricated steel extension section. (Specify 'C' Dim. required) for recessed installation.
- \_\_\_ -HD Heavy duty traffic cover rated at 10,000 lbs. maximum safe live load.
- \_\_\_ -K Anchor flange 1 3/4 [44] down from top and 2 [51] wide.
- \_\_\_ -KC Anchor flange 1 3/4 [44] down from top and 2 [51] wide with clamp collar.
- \_\_\_ -L Angle type (Z-1108-L) flow control device.

REV.	DATE: 07/18/95	C.N. NO. 72523
DWG. NO. P-14202 PRODUCT NO. Z-1172-91		

\*REGULARLY FURNISHED UNLESS OTHERWISE SPECIFIED