



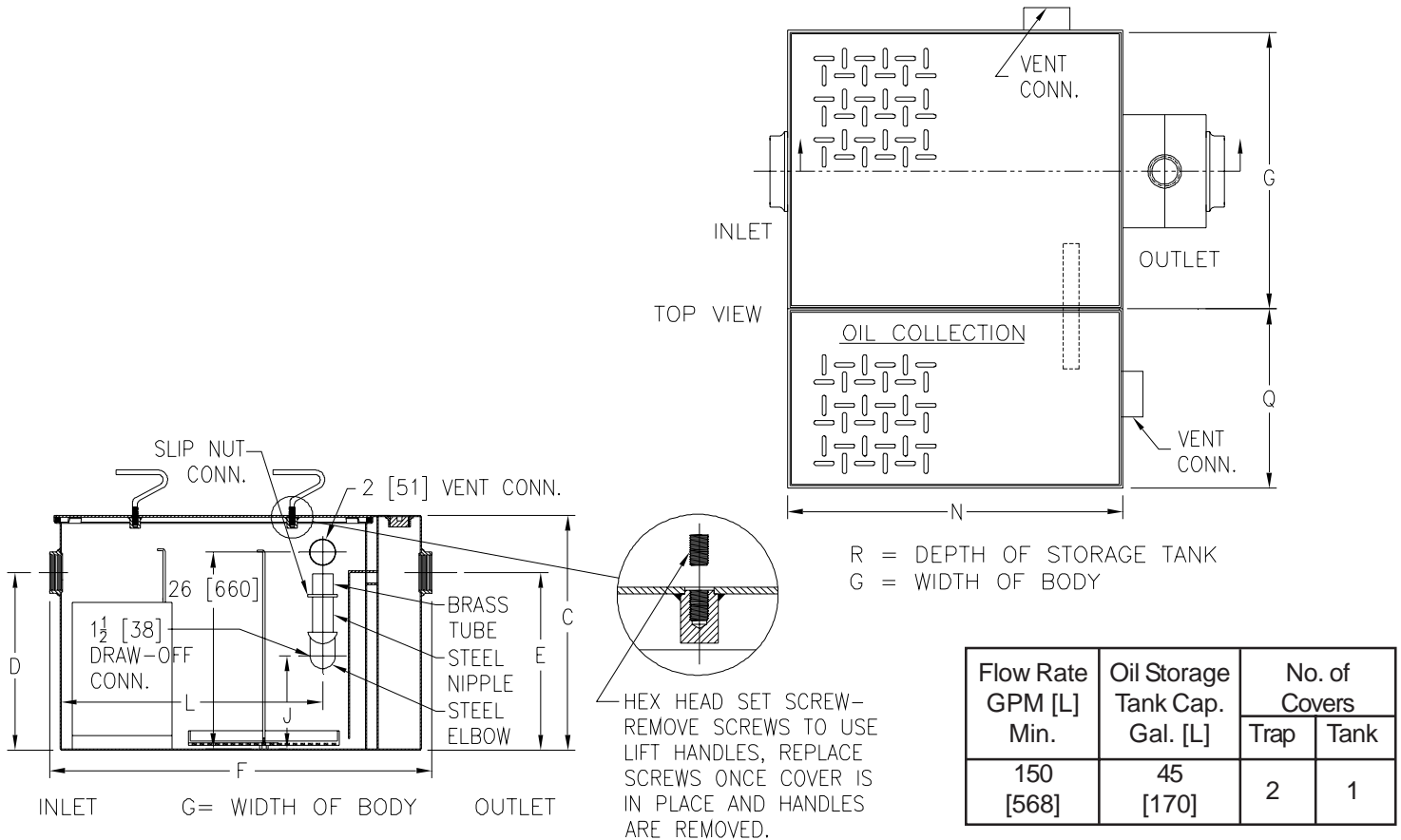
Z1188-143

LARGE CAPACITY OIL INTERCEPTOR W/INTEGRAL STORAGE TANK

SPECIFICATION SHEET

TAG _____

Dimensional Data (inches and [mm]) are Subject to Manufacturing Tolerances and Change Without Notice



Flow Rate GPM [L] Min.	Oil Storage Tank Cap. Gal. [L]	No. of Covers	
		Trap	Tank
150 [568]	45 [170]	2	1

Flow Rate GPM [L] Min.	Inlet/ Outlet Size**	Water Capacity Gal. [L]	Approx. Wt. Lbs. [kg]	Dimensions in Inches								
				C	D/E	F	G	J	L	N	Q	R
150 [568]	4 [102]	190 [179]	1105 [501]	30 3/4 [781]	25 1/4 [641]	56 [1422]	41 3/8 [1051]	14 [356]	43 7/8 [1114]	47 1/2 [1207]	17 1/2 [445]	30 3/4 [781]

ENGINEERING SPECIFICATION: ZURN Z1188-143 Large capacity Acid Resistant Coated interior and exterior fabricated steel oil interceptor, with bronze cleanout plug and visible double wall trap seal, removable combination pressure equalizing/flow diffusing baffle and sediment bucket, horizontal baffle, adjustable oil draw-off and vent connections either side. Complete with secured, gasketed, non-skid cover with removable lift handles, flow control fitting, and integral storage tank. Regularly furnished with inlet and outlet in high position.

OPTIONS (Check/specify appropriate options)

PREFIXES

___ **Z** Acid Resistant Coated Fabricated Steel*

SUFFIXES

- ___ -E Acid Resistant Coated interior and exterior fabricated steel extension section. (Specify 'C' Dim. required) for recessed installation.
- ___ -HD Heavy-duty traffic cover rated at 10,000 lbs [4536 kg.] maximum safe live load.
- ___ -K Anchor flange 1 3/4 [44] down from top and 2 [51] wide. No extension required to accommodate -K.
- ___ -KC Anchor flange 1 3/4 [44] down from top and 2 [51] wide with clamp collar.

REV.	DATE: 9/19/06	C.N. NO. 95620
DWG. NO. P-15331 PRODUCT NO. Z1188-143		

*REGULARLY FURNISHED UNLESS OTHERWISE SPECIFIED