



ZF806-HDG

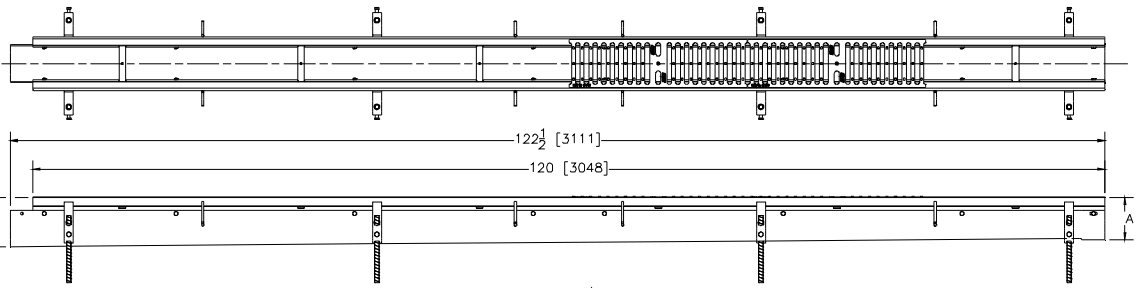
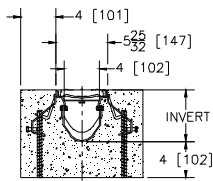
SPECIFICATION SHEET

6 [159] WIDE REVEAL FIBER REINFORCED POLYMER TRENCH DRAIN SYSTEM W/ HEAVY-DUTY GALVANIZED FRAME ASSEMBLY

TAG _____

Dimensional Data (inches and [mm]) are Subject to Manufacturing Tolerances and Change Without Notice

SPECIFYING ENGINEER IS RESPONSIBLE FOR CONCRETE ENCASEMENT AND REINFORCING BASED UPON APPLICATION AND LOCAL CODES.



NOTE: +Actual Channel length is 122 1/2 [3112] to allow overlap.

ENGINEERING SPECIFICATION: Zurn ZF806-HDG

Channels shall be 120 [3048] long, 6 [152] wide and have a 4 [102] throat. Modular channel sections shall be made of Fiber Reinforced Polymer (FRP). Shall have a positive mechanical connection between channel sections that will not separate during the installation. Channels shall weigh less than 2.31 lbs.[1.05kg] per linear foot, have a smooth, 1-1/2 [38] radiused self cleaning bottom with a Manning's coefficient of .009 and .75% or neutral 0% built in slope. Shall be provided with standard GDC grates that lock down to frame. Zurn 6 [152] wide reveal Galvanized Ductile Iron Slotted Grate conforming to ASTM specification A536, Grade 80-55-06. Ductile Iron grate is rated class C per the DIN EN1433 top load classifications. Supplied in 20 [508] nominal lengths with 1/2 [13] wide slots, and 3/4 [19] bearing depth. Grate has an open area of 28.1 sq. in. per ft. [59,463 sq. mm per meter]. The #10 gage thick Heavy-Duty Carbon Steel Galvanized Frame Assembly conforms to ASTM specification A36 and Galvanizing conforms to ASTM specification A123. Frames shall mechanically lock into the concrete surround at a maximum spacing of every 20 [508] with 16 concrete anchors per 120 [3048]. Frames shall have rebar attachment brackets as standard to secure trench in its final location. Grate lockdown bars are to be integral to the frame. All welds must be performed by a certified welder per ASTM standard AWS D1.1. Frames and Channels shall be produced in the U.S.A.

PREFIX OPTIONS (Check/specify appropriate options)

___ ZF Ten-foot Fiber Reinforced Polymer (FRP)*

SUFFIX OPTIONS (Check/specify appropriate options)

Outlet Adapters Add/Each

- ___ E1 Closed End Cap
- ___ E2 2 [51] No-Hub End Outlet
- ___ E3 3 [76] No-Hub End Outlet
- ___ E4 4 [102] No-Hub End Outlet
- ___ E6 6 [152] No-Hub End Outlet
- ___ U2 2 [51] No-Hub Bottom Outlet
- ___ U3 3 [76] No-Hub Bottom Outlet
- ___ U4 4 [102] No-Hub Bottom Outlet
- ___ U6 6 [152] No-Hub Bottom Outlet

Grate Options (Load Classifications are per DIN EN1433)

- ___ BDC Black Acid Resistant Epoxy Coated Ductile Grate - Class C
- ___ BDE Black Acid Resistant Epoxy Coated Ductile Grate - Class E
- ___ BG Galvanized Ductile Iron Cast Bar Grate - Class C
- ___ DC Ductile Iron Solid Cover - Class C
- ___ DBG Ductile Iron Cast Bar Grate - Class C
- ___ DGC Ductile Iron Slotted Grate - Class C*
- ___ DGE Ductile Iron Slotted Grate - Class E
- ___ GDC Galvanized Ductile Slotted Grate - Class C
- ___ GDE Galvanized Ductile Slotted Grate - Class E
- ___ GHPD Galvanized Heel-Proof Ductile Grate - Class B
- ___ GHPDE Galvanized Heel-Proof Ductile Grate - Class E
- ___ HPD Heel-Proof Ductile Slotted Grate - Class B
- ___ HPDE Heel-Proof Ductile Slotted Grate - Class E
- ___ HPP Heel-Proof Polyethylene Grate - Class A
- ___ LD Ductile Iron Longitudinal Slotted Grate - Class B
- ___ RFG Reinforced Galvanized Steel Slotted Grate - Class B
- ___ RPG Reinforced Galvanized Perforated Grate - Class B
- ___ RFGC Reinforced Slotted Galvanized Grate - Class C
- ___ RPGC Reinforced Perforated Galvanized Grate - Class C
- ___ RPGRC Reinforced Perforated Galvanized Reverse Punch Grate - Class C

Miscellaneous Options

- ___ DB Bottom Dome Strainer
- ___ JC Joint Connector
- ___ SW 8.1 [206] High Sidewall Extension Adapter (Per Pair)
- ___ VP Vandal-Proof Lockdown

Decorative Grate Options (Load Classifications are per DIN EN1433)

- ___ BCD Bronze Circular Decorative Grate - Class A
- ___ BDD Bronze Diagonal Decorative Grate - Class A
- ___ DCD Ductile Iron Circular Decorative Grate - Class C
- ___ DDD Ductile Iron Diagonal Decorative Grate - Class A
- ___ DOG Ductile Iron Decorative Grate - Class A
- ___ DWV Ductile Wave Decorative Grate - Class A
- ___ HPB Heel-Proof Bronze Slotted Grate - Class A

Trench No.	'A' Shallow Inv.	'B' Deep Inv.	Flow		
			(cfs)	(gpm)	(lps)
1002	4.75 [121]	5.65 [144]	.326	146	9
1002N	5.65 [144]	5.65 [144]	-	-	-
1003	5.65 [144]	6.55 [166]	.427	192	12
1004	6.55 [166]	7.45 [189]	.530	238	15
1004N	7.45 [189]	7.45 [189]	-	-	-
1005	7.45 [189]	8.35 [212]	.635	285	18
1006	8.35 [212]	9.25 [235]	.740	332	21
1007	9.25 [235]	10.15 [258]	.845	379	24
1008	10.15 [258]	11.05 [281]	.951	427	27
1008N	11.05 [281]	11.05 [281]	-	-	-
1009	11.05 [281]	11.95 [304]	1.058	475	30
1010	11.95 [304]	12.85 [326]	1.164	523	33

Note:

The maximum fluid temperature through the system must not exceed 150°F [66°C] and the range (Max. Temp. to Min. Temp.) must not exceed 100°F [38°C].

MADE in the U.S.A. (Load Classifications are per DIN EN1433)

- ___ AWG Aluminum Wire Grate - Class A
- ___ BDE-USA Black Acid Resistant Epoxy Coated Ductile Grate - Class E
- ___ DGC-USA Ductile Iron Slotted Grate - Class C
- ___ DGE-USA Ductile Iron Slotted Grate - Class E
- ___ FG Fabricated Galvanized Steel Slotted Grate - Class A
- ___ GDC-USA Galvanized Ductile Slotted Grate - Class C
- ___ GDE-USA Galvanized Ductile Slotted Grate - Class E
- ___ GHPDE-USA Galvanized Heel-Proof Ductile Grate - Class E
- ___ HPDE-USA Heel-Proof Ductile Slotted Grate - Class E
- ___ PG Perforated Galvanized Steel Grate - Class A
- ___ PPC Plastic Perforated Grate - Class C

Decorative MADE in the U.S.A. (Load Classifications are per DIN EN1433)

- ___ BZ Bronze Decorative Grate - Class A
- ___ NBZ Nickel Bronze Decorative Grate - Class A

*REGULARLY FURNISHED UNLESS OTHERWISE SPECIFIED

REV. C DATE: 05/11/12 C.N. NO. 124318

PROD./DWG. NO. ZF806-HDG

ZURN INDUSTRIES, LLC ♦ SPECIFICATION DRAINAGE OPERATION ♦ 1801 Pittsburgh Ave. ♦ Erie, PA 16514

Phone: 814455-0921 ♦ Fax: 814454-7929 ♦ World Wide Web: www.zurn.com

In Canada: ZURN INDUSTRIES LIMITED ♦ 3544 Nashua Drive ♦ Mississauga, Ontario L4V1L2 ♦ Phone: 905405-8272 Fax: 905405-1292