

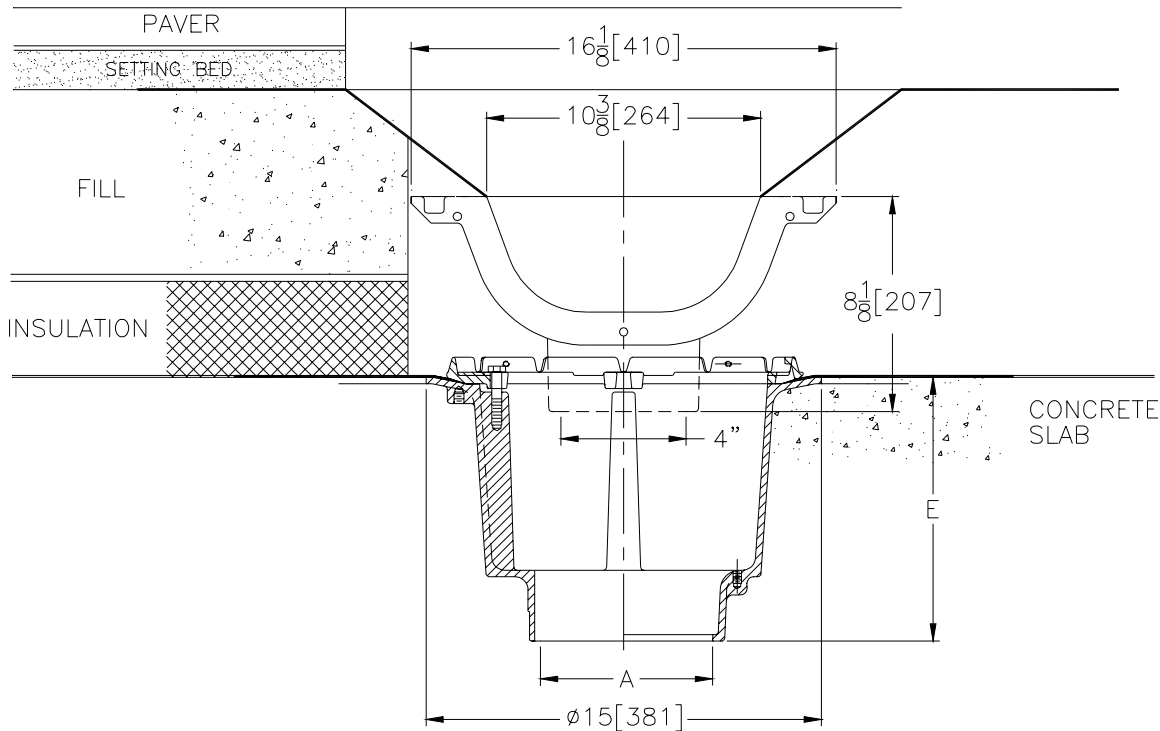


Z-666-80

TAG _____

**16 1/8 [410] WIDE MODULAR TRENCH DRAIN WITH
15 [381] DIAMETER DEEP SUMP DRAIN**

Dimensional Data (inches and [mm]) are Subject to Manufacturing Tolerances and Change Without Notice



A- Pipe Size Inches	Approx. Wt. Lbs.[kg]	Grate Open Area Sq. In.[cm ²]
3,4 [75,102]	46 [21]	103 [665]
6,8 [152,203]		

ENGINEERING SPECIFICATION Z-666-80 16 1/8 [410] Wide top with 10 3/8 [264] wide water way modular trench drain , Dura-Coated cast iron shallow sump body with bottom outlet. Both 12 [305] long outlet and extension modules have been machined, removing 2 [51] above 8 1/8 [207] dim. also both ends angled to meet 36 ft. 8 7/8 in. [11,198] radius to center line of trench. Complete with 15 [381] diameter deep sump drain body with combination membrane flashing clamp/gravel guard.

OPTIONS (Check/specify appropriate options)

OUTLET (Specify type)		PIPE SIZE (Specify size)	'E' BODY HT. DIMENSION
_____ IC	Inside Caulk	_____ 3,4,6 [75,102,152]	10 [254]
_____ IG	Inside Caulk w/Sealtrol Gskt.	_____ 3,4,6 [75,102,152]	10 [254]
_____ NH	No-Hub	_____ 3,4,6,8 [75,102,152,203]	10 [254]

PREFIXES

_____ **Z** D.C.C.I. Bodies and Extensions*

SUFFIXES

_____ **-AR** Acid Resisting Epoxy Coated Finish (Per. Section)
 _____ **-C** Clamp Collar (Per Section)
 _____ **-ES** 12 [305] Extension Section (Specify Number of Sections Required)
 _____ **-G** Galvanized Cast Iron
 _____ **-Y** Sediment Bucket (Per Outlet Section)

REV. B	DATE: 08/15/96	C.N. NO. 75475
DWG. NO. P-13981		PRODUCT NO. Z-666-80

*REGULARLY FURNISHED UNLESS OTHERWISE SPECIFIED