

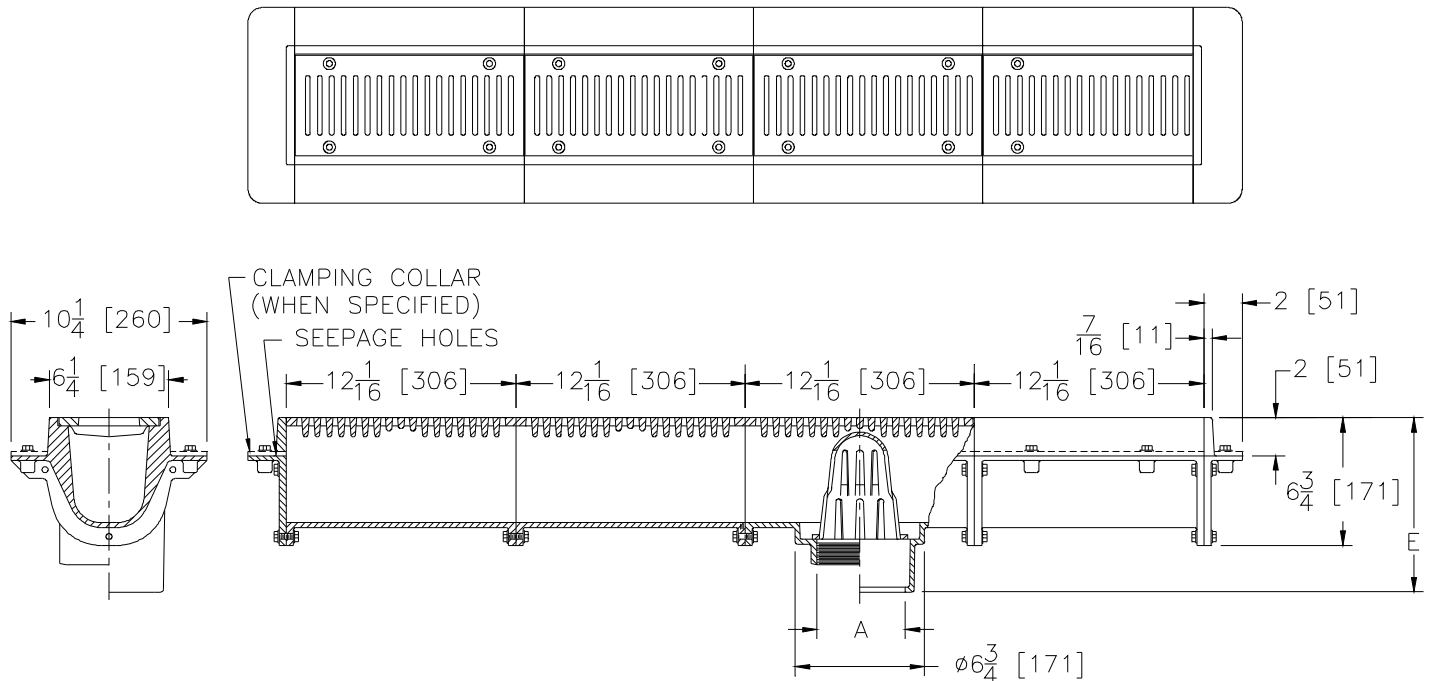


Z664-86

6" WIDE MODULAR TRENCH DRAIN EXTRA HEAVY DUTY

TAG _____

Dimensional Data (inches and [mm]) are Subject to Manufacturing Tolerances and Change Without Notice



A- Pipe Size In.	Grate Open Area Per Section Sq. In. [cm ²]
2-3-4 [50-75-100]	15 [97]

ENGINEERING SPECIFICATION: ZURN Z664-86 6" [152] Wide Top modular trench drain. Dura-Coated cast iron drain section with bottom outlet and secondary dome strainer. Both 12 [305] long drain module and 12 [305] long extension module are complete with integral seepage pan and loose extra heavy duty slotted heelproof grate.

OPTIONS (Check/specify appropriate options)

PIPE SIZE	(Specify size/type)	OUTLET	'E' BODY HT. DIM.
2 thru 4 [50 thru 150]	_____	IC Inside Caulk	9 1/8 [232]
2 thru 4 [50 thru 150]	_____	IG Inside Caulk w/Sealtrol Gskt.	9 1/8 [232]
2 thru 4 [50 thru 150]	_____	IP Threaded	7 5/8 [194]
2 thru 4 [50 thru 150]	_____	NH No-Hub	
2 thru 4 [50 thru 150]	_____	NL Neo-Loc	8 3/8 [213]

PREFIXES

- _____ Z D.C.C.I. Body and Grate*
- _____ ZB D.C.C.I Body w/Polished Bronze Top (Add 1/8 [3] to 'E' and 2 [51] Dim.)
- _____ ZN D.C.C.I Body w/Polished Nickel Bronze Top (Add 1/8 [3] to 'E' and 2 [51] Dim.)

SUFFIXES

- | | |
|---|------------------------------------|
| _____ -AR Acid Resisting Epoxy Coated Cast Iron | _____ -V Backwater Valve |
| _____ -C Clamp Collar or Underdeck Clamp | _____ -VP Vandal Proof Secured Top |
| _____ -DG Duresist Grate | _____ -Y Sediment Bucket |
| _____ -G Galvanized Cast Iron | |
| _____ -M Side Outlet Adapter Via End Plate | |
| _____ -TS Top Secured With Slotted Screws | |

REV.	DATE: 8/5/02	C.N. NO. 89737
DWG. NO. P-14920 PRODUCT NO. Z664-86		

*REGULARLY FURNISHED UNLESS OTHERWISE SPECIFIED