



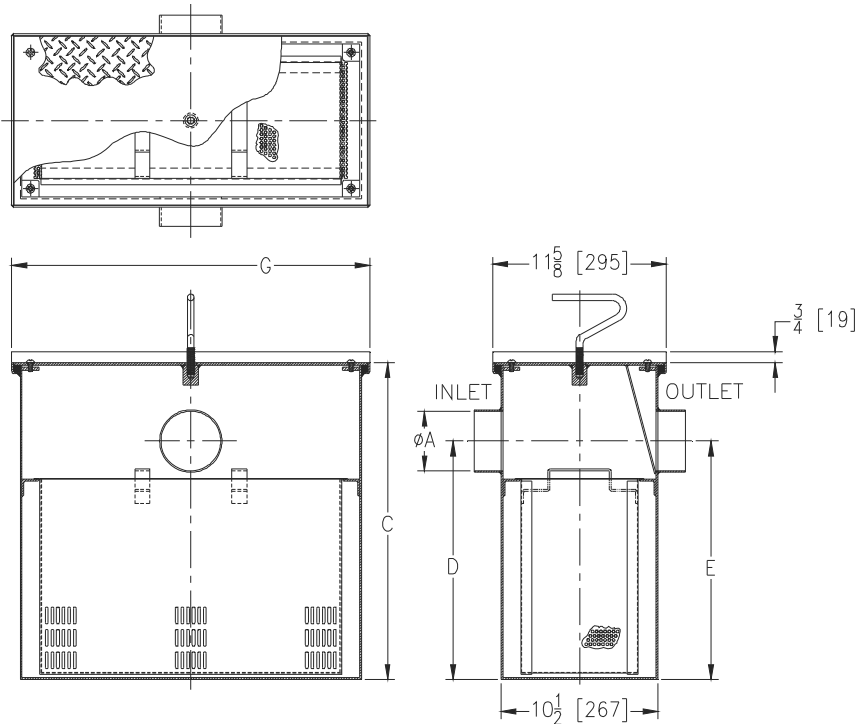
# Z1183-FC-87

## SOLIDS INTERCEPTOR W/ 3/4" RECESSED TOP

SPECIFICATION SHEET

TAG \_\_\_\_\_

Dimensional Data (inches and [ mm ]) are Subject to Manufacturing Tolerances and Change Without Notice



| Size | 'A' Inlet/Outlet Size | Flow Rate G.P.M. [L] | Solids Cap. Cubic Ft. [m <sup>3</sup> ] | Dimensions In Inches |              |               |
|------|-----------------------|----------------------|---|----------------------|--------------|---------------|
|      |                       |                      |   | C                    | G            | D/E           |
| 100  | 2 [51]                | 4 [15]               | 0.20 [.006]                             | 10 [254]             | 11-3/4 [298] | 7-1/4 [184]   |
| 200  | 2 [51]                | 7 [26]               | 0.29 [.008]                             | 11-1/8 [283]         | 13-3/4 [349] | 8-1/8 [206]   |
| 300  | 2 [51]                | 10 [38]              | 0.33 [.009]                             | 11-3/4 [298]         | 15-7/8 [403] | 8-1/4 [210]   |
| 400  | 3 [76]                | 15 [57]              | 0.38 [.011]                             | 13-3/8 [340]         | 18-5/8 [473] | 9-3/8 [238]   |
| 500  | 3 [76]                | 20 [76]              | 0.66 [.019]                             | 15 [381]             | 19-1/8 [488] | 11-3/4 [298]  |
| 600  | 3 [76]                | 25 [95]              | 0.79 [.022]                             | 17 [432]             | 21-3/4 [552] | 12-7/16 [316] |
| 700  | 3 [76]                | 35 [132]             | 1.17 [.033]                             | 18-3/4 [476]         | 24-3/8 [619] | 14-3/16 [360] |
| 800  | 3 [76]                | 50 [189]             | 1.35 [.038]                             | 21-1/8 [546]         | 24-3/8 [619] | 16 [406]      |
| 900  | 3 [76]                | 75 [284]             | 1.61 [.046]                             | 22-3/4 [578]         | 24-3/8 [619] | 18-1/2 [470]  |
| 1000 | 3 [76]                | 100 [379]            | 1.8 [.051]                              | 27 [686]             | 24-3/8 [619] | 23 [584]      |
| 1100 | 3 [76]                | 125 [473]            | 1.95 [.055]                             | 30-1/8 [765]         | 24-3/8 [619] | 24-1/2 [622]  |
| 1200 | 4 [102]               | 150 [568]            | 2.11 [.060]                             | 30-3/4 [781]         | 24-3/8 [619] | 25-1/4 [641]  |

**ENGINEERING SPECIFICATION:**  
ZURNZ1183-FC-87

Large capacity acid resistant coated interior and exterior fabricated steel, or stainless steel solids interceptor, for recessed installation with screen attached to gasketed, non-skid secured cover with removable lift handle, 3/4" [19] recessed top for tile, and removable sediment basket. Size to be used with corresponding Z1170, Z1172 or Z1173 Grease Interceptors.

**OPTIONS** (Check/specify appropriate option)

**PREFIXES**

- \_\_\_ Z Acid Resistant Coated Fabricated Steel\*
- \_\_\_ ZS Type 304 Fabricated Stainless Steel

**SUFFIXES**

- \_\_\_ -CS Custom Screens (Specify material and perforation size required)
- \_\_\_ -E Acid Resistant Coated Interior and Exterior Fabricated Steel Extension Section.
- \_\_\_ -YR Replacement Stainless Steel Bucket Assembly

|                              |                |                 |
|------------------------------|----------------|-----------------|
| REV.                         | DATE: 05/30/13 | C.N. NO. 129429 |
| PROD./DWG. NO. : Z1183-FC-87 |                |                 |

\*REGULARLY FURNISHED UNLESS OTHERWISE SPECIFIED