



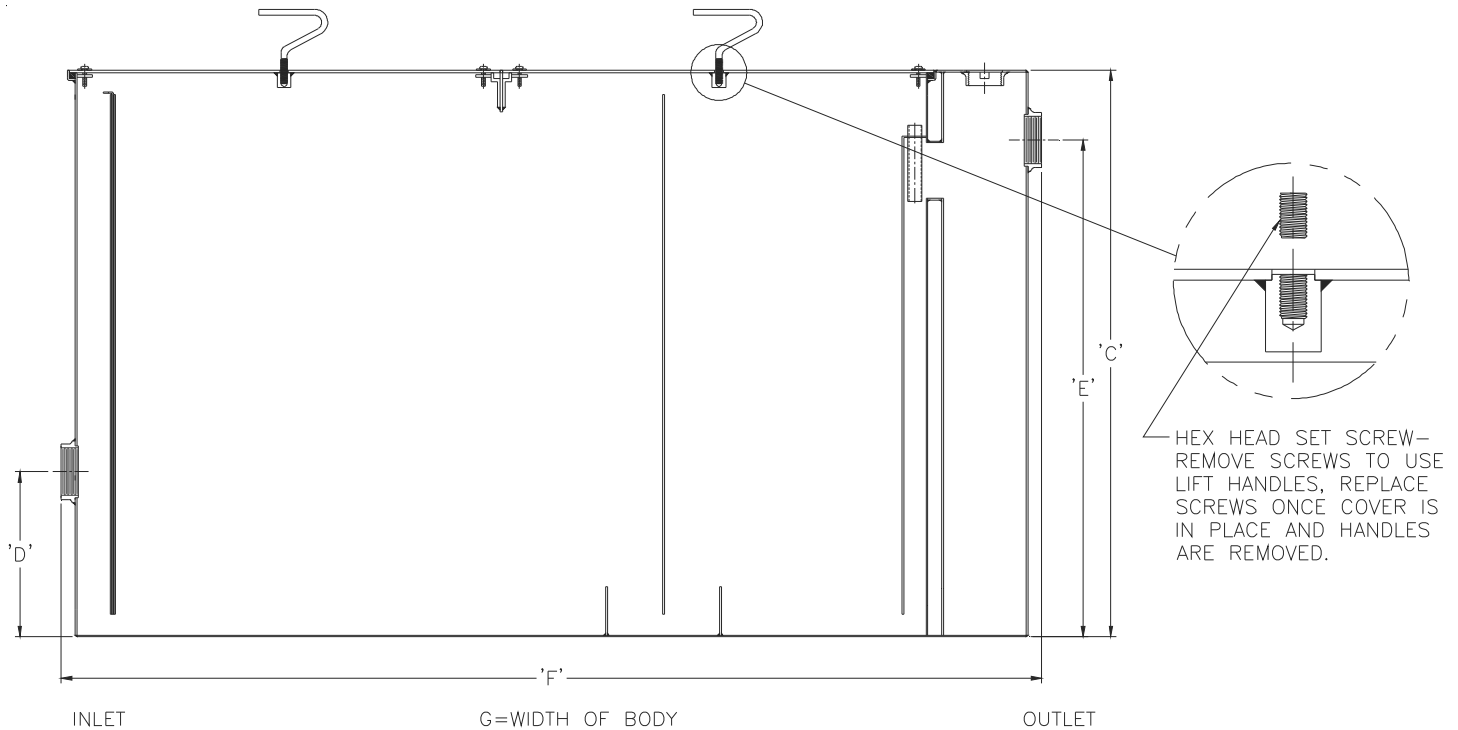
Z1172-197

**SIZE 1400 LARGE CAPACITY GREASE INTERCEPTOR
W/LOW INLET**

SPECIFICATION SHEET

TAG _____

Dimensional Data (inches and [mm]) are Subject to Manufacturing Tolerances and Change Without Notice



Size	Inlet/ Outlet Size	Flow Rate G.P.M. [L.P.M.]	Capacity		No. of Covers	Approx. Wt. Lbs. [kg]	Dimensions in Inches [mm]				
			Water Gal. [L]	Grease Lbs. [kg]			C	D	E	F	G
1400	5 [152]	250 [946]	465 [1760]	500 [227]	2	1384 [628]	41 [1041]	12 [305]	36 [914]	71 [1803]	51-5/8 [1311]

ENGINEERING SPECIFICATION: ZURN Z1172-197

Size 1400 Large capacity Acid Resistant Coated interior and exterior fabricated steel grease interceptor, rated at 250 GPM [946 LPM] and 500 Lbs. [227 kg] grease capacity, with internal air relief by-pass, bronze cleanout plug (which can be used as a sampling port) and visible double wall trap seal with removable pressure equalizing/flow diffusing baffle. Gasketed non-skid secured cover with removable lift handles, complete with flow control fitting. Regularly furnished with inlet in low position and outlet in high position.

OPTIONS (Check/specify appropriate options)

PREFIXES

- ___ Z Acid Resistant Coated Fabricated Steel*
- ___ ZS All Type 304 Fabricated Stainless Steel

SUFFIXES

- ___ -AL Aluminum Cover
- ___ -E Acid Resistant Coated Interior and exterior fabricated steel extension section. (Specify 'C' Dim. required) for recessed installation.
- ___ -ER Acid resistant coated interior and exterior fabricated retro fit steel extension section (Specify extension height required), with PVC cleanout extension kit.
- ___ -HD Heavy duty traffic cover rated at 10,000 lbs. [4536 kg] maximum safe live load. An increase 'C' dim. is required when -HD option is specified. (See -HD option specification sheet)
- ___ -K Anchor flange 1-3/4" [44mm] down from top and 2" [51mm] wide. (A 3" [76mm] minimum Extension Height is required when Anchor Flange (-K) Option is specified.)
- ___ -KC Anchor flange 1-3/4" [44mm] down from top and 2" [51mm] wide with clamp collar. (A 3" [76mm] minimum Extension Height is required when Anchor Flange (-KC) Option is specified.)
- ___ -L Angle type (Z1108-L) flow control device.
- ___ -PW Plug Wrench

* Regularly furnished unless otherwise specified.

Zurn Industries, LLC | Specification Drainage Operation
1801 Pittsburgh Avenue, Erie, PA U.S.A. 16502 · Ph. 855-663-9876, Fax 814-454-7929
In Canada | **Zurn Industries Limited**
3544 Nashua Drive, Mississauga, Ontario L4V 1L2 · Ph. 905-405-8272, Fax 905-405-1292
www.zurn.com

Rev. -
Date: 01/18/2019
C.N. No. 141002
Prod. | Dwg. No. Z1172-197