

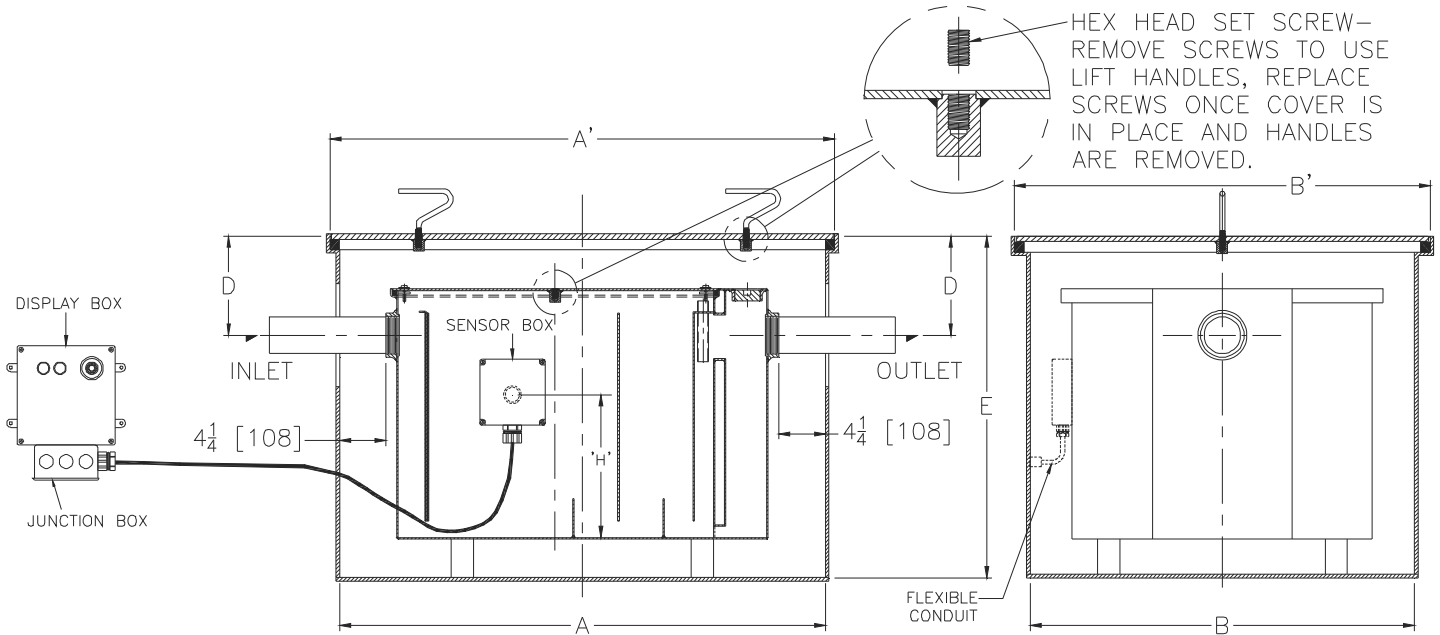


Z1172-168

LARGE CAPACITY GREASE INTERCEPTOR W/ RECESSED ENCLOSURE & USER NOTIFICATION

SPECIFICATION SHEET
TAG _____

Dimensional Data (inches and [mm]) are Subject to Manufacturing Tolerances and Change Without Notice



Size	Inlet/ Outlet Size**	Flow Rate G.P.M. [L]	Capacity		No. of Covers	Approx. Wt. Lbs. [kg]	Dimension in Inches						
			Water Gal. [L]	Grease Lbs. [kg]			A	A'	B	B'	D	E	H
900	3 [76]	75 [284]	65 [246]	150 [68]	1	860 [390]	44-1/4 [1124]	46-1/4 [1175]	41-1/8 [1045]	43-1/8 [1095]	22 [559]	44-1/4 [1124]	11-1/4 [286]

ENGINEERING SPECIFICATION: ZURN Z1172-168

Large capacity interceptor with Acid Resistant Epoxy Coated Recessing Receiver, enclosed type, equipped with fixed support brackets and gasketed non-skid cover with removable lift handles. Includes encased fiberglass sensor box containing an electronic grease level sensor (specify right of left side)**, a fiberglass display box with one green power light, one red grease level light, audio alarm, and junction box. For interceptor specifications see Z1172 specification sheet.

OPTIONS (Check/specify appropriate options)

PREFIXES

____ Z Acid Resistant Coated Fabricated Steel*

SUFFIXES

- ____ -K Anchor flange 1-3/4 [44] down from top and 2 [51] wide.
- ____ -KC Anchor flange 1-3/4 [44] down from top and 2 [51] wide with clamp collar.
- ____ -L Angle type (Z1108-L) flow control device.
- ____ -T Cover recessed for tile/terrazzo. A3 [76] minimum extension height is required. (Specify required recess depth- 1/8 [3], 3/4 [19] or 1-1/4 [32]).

Note:

- **1. Sensor box is mounted on the left or right hand side of the unit when facing inlet (must be specified).
- 2. Power supply 120V GFCI.
- 3. Location of inlet from bottom of interceptor cannot be changed.

REV. -	DATE: 09/13/13	C.N. NO. 129924
PROD./DWG/ NO. Z1172-168		

*REGULARLY FURNISHED UNLESS OTHERWISE SPECIFIED