



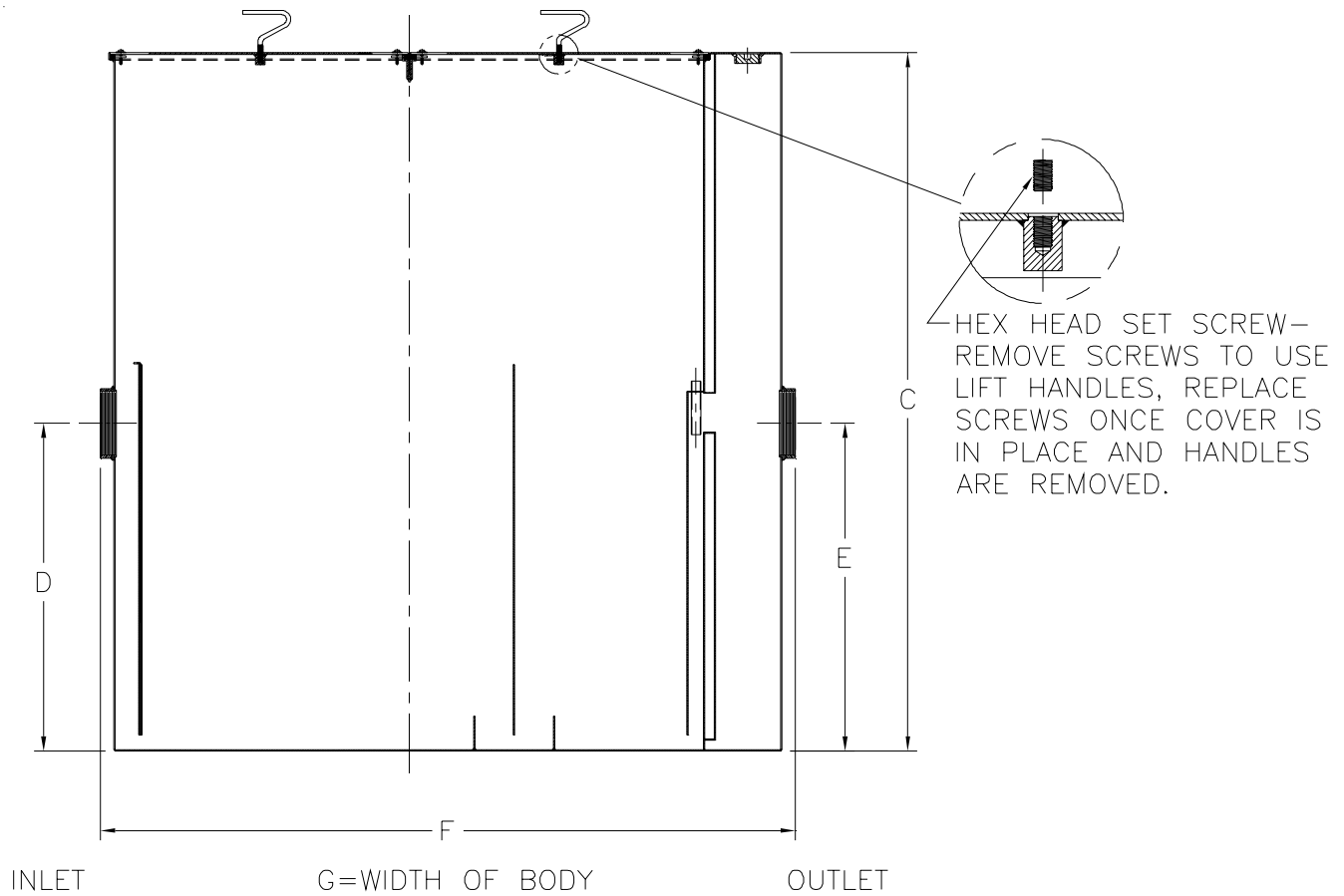
Z1172-145

LARGE CAPACITY GREASE INTERCEPTOR W/ ALUMINUM COVERS, 30 [762] EXTENSION & 6 [152] INLET/OUTLET

SPECIFICATION SHEET

TAG _____

Dimensional Data (inches and [mm]) are Subject to Manufacturing Tolerances and Change Without Notice



HEX HEAD SET SCREW—
REMOVE SCREWS TO USE
LIFT HANDLES, REPLACE
SCREWS ONCE COVER IS
IN PLACE AND HANDLES
ARE REMOVED.

Size	Inlet/ Outlet Size**	Flow Rate G.P.M. [L]	Capacity		No. of Covers	Approx. Wt. Lbs. [kg]	Dimensions in Inches			
			Water Gal. [L]	Grease Lbs. [kg]			C	D/E	F	G
1400	6 [152]	250 [945]	465 [1758]	500 [227]	2	1810 [821]	71 [1041]	36 1/2 [927]	71 [1803]	51 5/8 [1311]

ENGINEERING SPECIFICATION: ZURNZ1172-145

Large capacity Acid Resistant Coated interior and exterior fabricated steel grease interceptor with 30 [762] integral extension, rated at 250 GPM and 500 Lbs. grease capacity, with internal air relief by-pass, bronze cleanout plug with plug wrench and visible double wall trap seal with removable pressure equalizing/flow diffusing baffle. Gasketed non-skid secured aluminum cover with covered removable handles, complete with flow control fitting. 6 [152] inlet and outlet, regularly furnished in high position.

OPTIONS (Check/specify appropriate options)

PREFIXES

___ Z Acid Resistant Coated Fabricated Steel*

SUFFIXES

- ___ -K Anchor flange 1 3/4 [44] down from top and 2 [51] wide.
- ___ -KC Anchor flange 1 3/4 [44] down from top and 2 [51] wide with clamp collar.
- ___ -L Angle type (Z1108-L) flow control device.

*REGULARLY FURNISHED UNLESS OTHERWISE SPECIFIED

REV.	DATE: 07/23/07	C.N. NO. 96971
DWG. NO. P-15452	PRODUCT NO. Z1172-145	

ZURN INDUSTRIES, LLC. ♦ SPECIFICATION DRAINAGE OPERATION ♦ 1801 Pittsburgh Ave. ♦ Erie, PA 16514

Phone: 814/455-0921 ♦ Fax: 814/454-7929 ♦ World Wide Web: www.zurn.com

In Canada: ZURN INDUSTRIES LIMITED ♦ 3544 Nashua Drive ♦ Mississauga, Ontario L4V1L2 ♦ Phone: 905/405-8272 Fax: 905/405-1292