



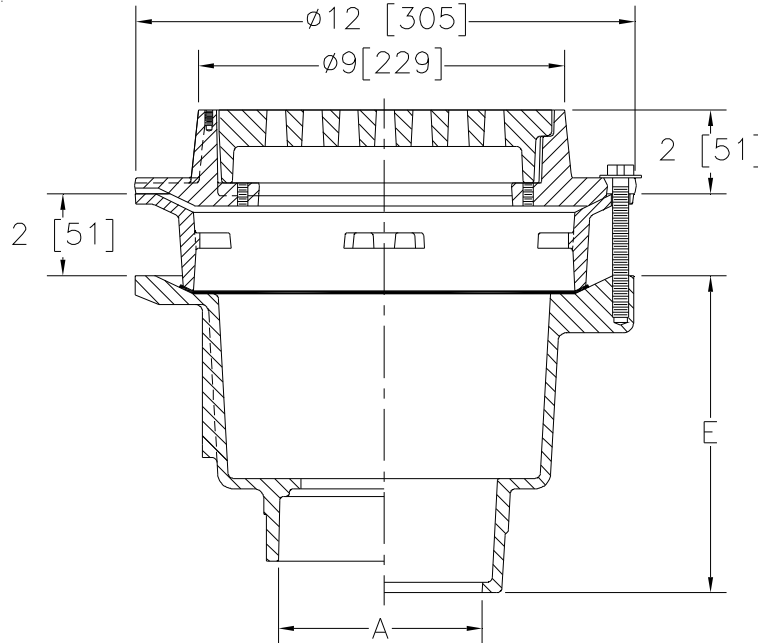
Z511-F

9 [229] DIAMETER HEAVY-DUTY DRAIN WITH EXTENSION FRAME

SPECIFICATION SHEET

TAG _____

Dimensional Data (inches and [mm]) are Subject to Manufacturing Tolerances and Change Without Notice



A Pipe Size In [mm]	Approx. Wt. Lbs. [kg]	Grate Open Area Sq. In. [cm ²]
2,3,4 [51,76,102]	49 [22]	18 [116]

ENGINEERING SPECIFICATION: ZURN Z511-F

9" [229mm] Diameter top drain, Dura-Coated cast iron deep sump body with bottom outlet, 2" [51mm] extension frame, seepage pan and combination membrane flashing clamp and frame for heavy duty cast iron deep flange grate.

OPTIONS (Check/specify appropriate options)

PIPE SIZE

- 3,4 [76,102]
- 3,4 [76,102]
- 2,3,4 [51,76,102]
- 3,4 [76,102]

(Specify size/type) OUTLET

- ___ IC Inside Caulk
- ___ IG Inside Caulk w/Sealtrol Gskt.
- ___ NL Neo-Loc
- ___ IP Threaded

'E' BODY HT. DIM.

- 7-5/8 [194]
- 7-5/8 [194]
- 6-7/8 [175]
- 7-5/8 [194]

PREFIXES

- ___ Z D.C.C.I. Body and Grate*
- ___ ZB D.C.C.I. Body w/ Polished Bronze Top (Add 3/16 [5] to 2 [51] and 3/4 [19] to 9 [229] Dim.)
- ___ ZN D.C.C.I. Body w/ Polished Nickel Bronze Top (Add 3/16 [5] to 2 [51] and 3/4 [19] to 9 [229] Dim.)

SUFFIXES

- | | |
|--|--|
| ___ -AR Acid Resisting Epoxy Coated Cast Iron | ___ -SG Solid Gasketed Cover |
| ___ -BT Bell Trap | ___ -TC Neo-Loc Test Cap Gasket |
| ___ -DG Duresist Grate | (2,3,4 [51,76,102] NL Bottom Outlet Only) |
| ___ -G Galvanized Cast Iron | ___ -TS Top Secured with Slotted Screws |
| ___ -HP Heel-Proof Grate | ___ -V Backwater Valve (For 3,4 [76,102] |
| ___ -J Auxiliary Inlet Connection | IC & IP or 3 [76] IG Connections only) |
| (Specify 1-1/2 [38] or 2 [51] IP, Number & Location) | ___ -VP Vandal-Proof Secured Top |
| ___ -P Trap Primer Connection | ___ -W Winter Closure Plug (For 3,4 [76,102] |
| ___ -S Secondary Strainer | IC & IP or 3 [76] IG Connections only) |
| ___ -SC Solid Cover w/ Lift Handle | ___ -Y Sediment Bucket |

* Regularly furnished unless otherwise specified.