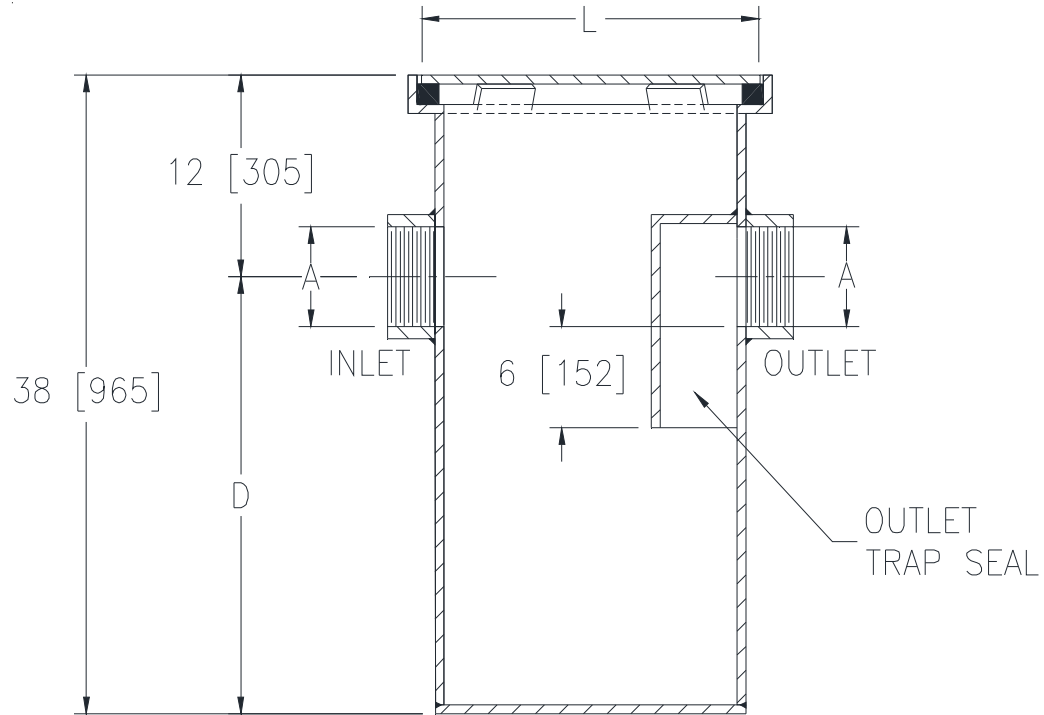




Z1187-SI-156

SIZE 14 SAND INTERCEPTOR WITH SOLID COVER

Dimensional Data (inches and [mm]) are Subject to Manufacturing Tolerances and Change Without Notice



*12[305] REGULARLY FURNISHED – SPECIFY DIMENSION IF HIGHER OR LOWER IS REQUIRED

| Size | Flow GPM [LPM] (Max.) | 'A' Pipe Size | 'L' | 'D' | Capacity Gal. [L] (Static) | Width | Approx. Wt. Lbs [kg] |
|------|-----------------------|---------------|----------|----------|----------------------------|----------|----------------------|
| 14 | 14 [53] | 4 [102] | 20 [508] | 26 [660] | 42 [159] | 20 [508] | 90 [41] |

ENGINEERING SPECIFICATION: ZURN Z1187-SI-156

Acid Resistant Coated interior and exterior fabricated steel sand interceptor with threaded inlet and outlet, complete with secured, gasketed, light-duty solid cover.

OPTIONS (Check/specify appropriate options)

PREFIXES

___Z Acid Resistant Coated Fabricated Steel*

SUFFIXES

- ___-E Integral Extension Assembly (Specify extension height)
- ___-K Anchor Flange 1-3/4 [44] down from top and 2 [51] wide. No extension required to accommodate -K option.
- ___-KC Anchor Flange 1-3/4 [44] down from top and 2 [51] wide with clamp collar. No extension required to accommodate -KC option.
- ___-NH No-Hub Inlet and Outlet (Z1040)
- ___-VP Vandal Proof Screws

* Regularly furnished unless otherwise specified.