



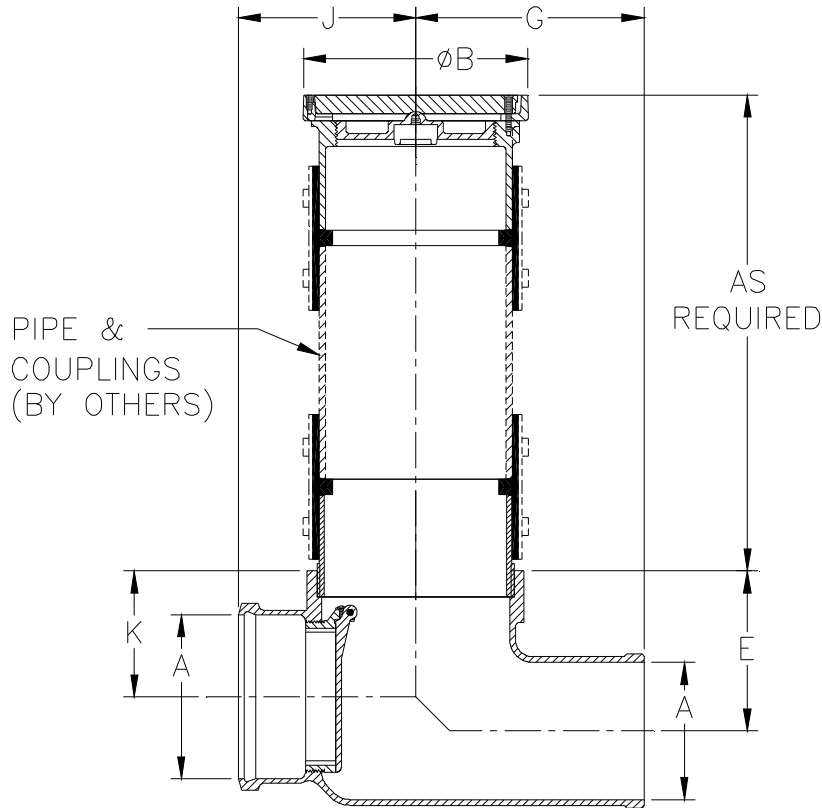
Z1095-88

BACKWATER VALVE W/ NON-ADJUSTABLE FLOOR CLEANOUT - FLAPPER TYPE

SPECIFICATION SHEET

TAG _____

Dimensional Data (inches and [mm]) are Subject to Manufacturing Tolerances and Change Without Notice



ENGINEERING SPECIFICATION: ZURN Z1095-88

Backwater Valve, Dura-Coated cast iron body, hub inlet and offset spigot outlet, automatic type valve seat and flapper which hangs closed during periods of non-operation, complete with no-hub adapter and non-adjustable floor cleanout with gas and watertight ABS tapered threaded plug and round scoriated cover and frame.

Dimensions In Inches						Approx. Wt. Lbs. [kg]
Pipe Size		E	G	J	K	
A	B					
2 [51]	7-1/4 [184]	4-3/8 [111]	7 [178]	5 [127]	2-7/8 [73]	23 [10]
4 [102]	9-1/4 [235]	5-5/8 [143]	8-1/2 [216]	6-3/4 [171]	4-1/8 [105]	34 [15]
6 [154]	9-1/4 [235]	6 [152]	10 [254]	7-3/4 [197]	4-1/2 [114]	45 [20]

CONNECTIONS (Check/specify appropriate options)

PIPE SIZE

2 - 4 - 6 [51 - 102 - 154]

(Specify size) CONNECTION

____ HB X SP Hub x Spigot

PREFIXES

- ____ Z D.C.C.I. Body*
- ____ ZB D.C.C.I. Body with Polished Bronze Top
- ____ ZN D.C.C.I. Body with Polished Nickel Bronze Top

SUFFIXES

- ____ -BV Bronze Flapper Valve (4 [102] Size only)
- ____ -G Galvanized Cast Iron

* Regularly furnished unless otherwise specified.