

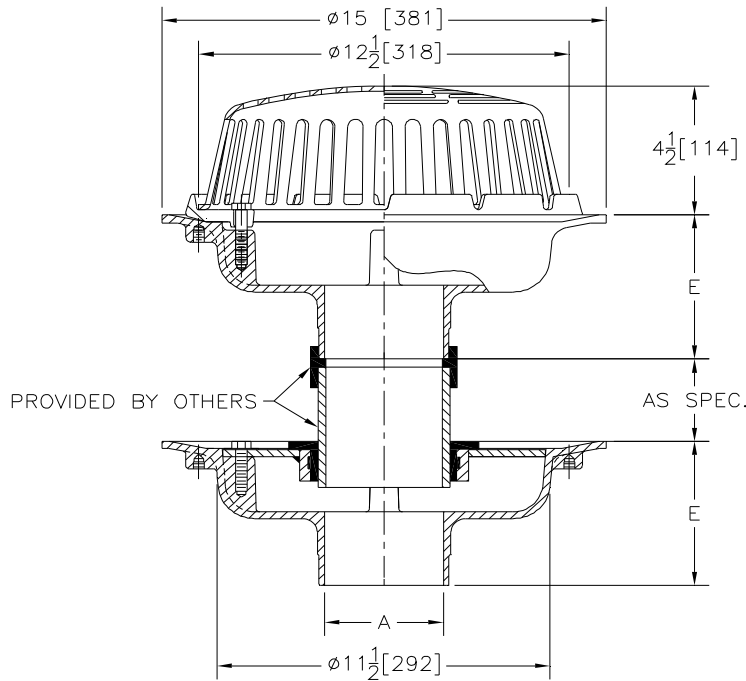


Z100-178

15 [381] DIAMETER MAIN ROOF ISOLATION DECK DRAIN LOW SILHOUETTE DOME

TAG _____

Dimensional Data (inches and [mm]) are Subject to Manufacturing Tolerances and Change Without Notice



A- Pipe Size In.	Approx. Wt. Lbs. [kg]	Dome Open Area Sq. In. [cm ²]
2-3-4 [51-76-102]	26 [12]	103 [665]
5-6 [127-152]	27 [12]	
8 [203]	28 [13]	

ENGINEERING SPECIFICATION: ZURN Z100-178 15 [381] Diameter roof drain. Dura-Coated cast iron upper and lower bodies with combination membrane flashing clamp/gravel guard, low silhouette Poly-Dome, (lower body) clamp collar and neoprene flex gasket.

OPTIONS (Check/specify appropriate options)

PIPE SIZE

2 thru 6,8 [51 thru 152,203]

(Specify size/type) **OUTLET**

_____ NH No-Hub

E BODY HT. DIM.

5 1/4 [133]

PREFIXES

- _____ Z D.C.C.I. Body with Poly-Dome*
- _____ ZA D.C.C.I. Body with 6 3/4 [171] High Aluminum Dome
- _____ ZC D.C.C.I. Body with Cast Iron Dome
- _____ ZRB D.C.C.I. Body with Plain Bronze Dome

SUFFIXES

- | | |
|--|--|
| _____ -AC Angular Underdeck Clamp (Lower Body) | _____ -SC Secondary Clamping Collar(Upper Body) |
| _____ -AR Acid Resistant Epoxy Coated Finish | _____ -SS Stainless Steel Mesh Screen Over Dome |
| _____ -AW 3/4 [19] to 4 [102] Adj. Water Level Regulator | _____ -VP Vandal Proof Secured Top |
| _____ -BS Bronze Mesh Screen Over Dome | _____ -W2 2 [51] Internal Water Dam |
| _____ -C Underdeck Clamp (Lower Body) | _____ -W3 3 [76] Internal Water Dam |
| _____ -DX Dex-o-tex Flange (Upper Body) | _____ -W4 4 [102] Internal Water Dam |
| _____ -E Static Extension 1 [25] thru 4 [102] (Specify Ht.)(Upper Body) | _____ -XJ Vertical Expansion Joint (See Z-190) |
| _____ -EA Adjustable Extension Assembly 1 3/4 [44] thru 3 1/2 [89](Upper Body) | _____ -6 6 3/4 [171] High Aluminum Dome (148 Sq. In. [955 cm ²] Open Area) |
| _____ -ES Static Extension With Secondary Clamp(Upper Body) | _____ -84 Stainless Steel Perforated Gravel Guard |
| _____ -FG Flush Grate | _____ -85 Stainless Steel Perforated Extension |
| _____ -G Galvanized Cast Iron | _____ -89 2 [51] High External Water Dam |
| _____ -GD Galvanized Cast Iron Dome | |
| _____ -R Roof Sump Receiver (Lower Body) | |

REV. DATE: 11/14/07 C.N. NO. 97698

DWG. NO. P-15489 PRODUCT NO. Z100-178

*REGULARLY FURNISHED UNLESS OTHERWISE SPECIFIED