



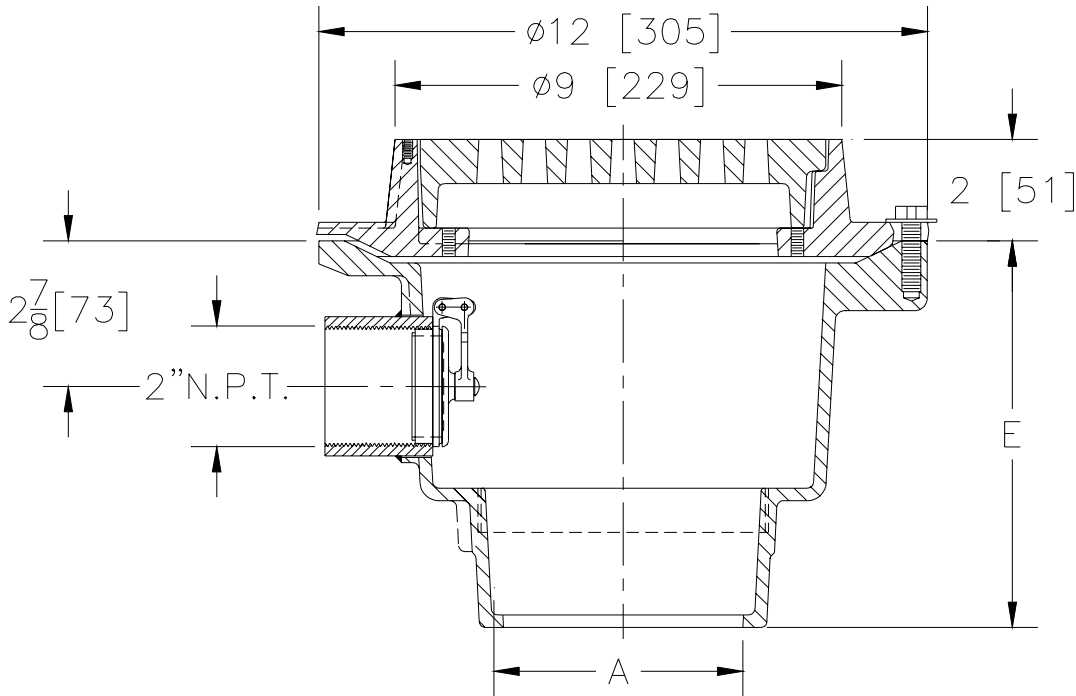
Z-511-79

9" [229] HEAVY DUTY DRAIN

SPECIFICATION SHEET

TAG _____

Dimensional Data (inches and [mm]) are Subject to Manufacturing Tolerances and Change Without Notice



A- Pipe Size In.	Approx. Wt. Lbs. [kg]	Grate Open Area Sq. In. [cm ²]
2-3-4 [50-75-100]	40 [18]	18 [116]

ENGINEERING SPECIFICATION: ZURN Z-511-79 9 [229] Diameter top drain, Dura-Coated cast iron deep sump body with 2" aux. inlet connection with backwater valve with bottom outlet, seepage pan and combination membrane flashing clamp and frame for heavy duty cast iron deep flange grate.

OPTIONS (Check/specify appropriate options)

PIPE SIZE

- 2, 3, 4 [50, 75, 100]
- 2, 3, 4 [50, 75, 100]
- 2, 3, 4 [50, 75, 100]

(Specify size/type) **OUTLET**

- _____ IC Inside Caulk
- _____ IG Inside Caulk w/Sealtrol Gskt.
- _____ NL Neo-Loc

'E' BODY HT. DIM.

- 7 1/2 [190]
- 7 1/2 [190]
- 6 5/8 [168]

PREFIXES

- _____ Z- D.C.C.I. Body and Grate*
- _____ ZB- D.C.C.I. Body w/Polished Bronze Top
- _____ ZN- D.C.C.I. Body w/Polished Nickel Bronze Top

SUFFIXES

- _____ -AR Acid Resisting Epoxy Coated Cast Iron
- _____ -BT Bell Trap Bucket
- _____ -DG Duresist Grate
- _____ -F 2 [51] Extension Frame
- _____ -G Galvanized Cast Iron
- _____ -S Secondary Strainer
- _____ -SC Solid Cover
- _____ -SG Solid Gasketed Cover
- _____ -VP Vandal Proof Secured Top
- _____ -W Winter Closure Plug (See Z-511)
- _____ -Y Sediment Bucket

REV. A	DATE: 4/22/97	C.N. NO. 77796
DWG. NO. P-14212 PRODUCT NO. Z-511-79		

*REGULARLY FURNISHED UNLESS OTHERWISE SPECIFIED