



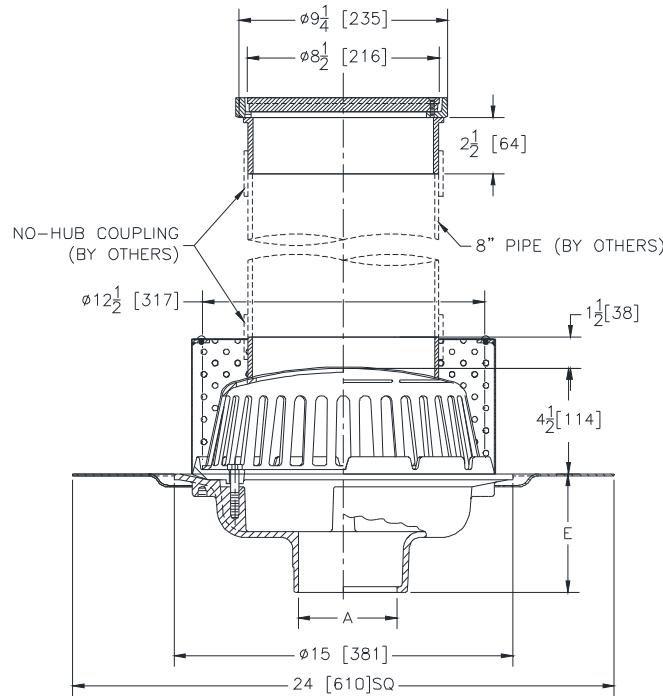
Z100-310

15 [381] DIAMETER MAIN ROOF DRAIN WITH PERFORATED SCREEN ASSEMBLY & ACCESS HOUSING

SPECIFICATION SHEET

TAG _____

Dimensional Data (inches and [mm]) are Subject to Manufacturing Tolerances and Change Without Notice



A Pipe Size In. [mm]	Approx. Wt. Lbs. [kg]	Dome Open Area Sq. In. [cm ²]
2,3,4 [51,76,102]	43 [20]	103 [665]
6 [152]	44 [20]	

ENGINEERING SPECIFICATION: ZURN Z100-310

15" [381 mm] Diameter roof drain. Dura-Coated cast iron bodies with combination membrane flashing clamp/gravel guard, low silhouette dome with 8" [203mm] no-hub standpipe connection, roof sump receiver, and access housing with round frame and secured cover. Complete with secured type 304 (CF8) stainless steel perforated screen assembly.

OPTIONS (Check/specify appropriate options)

PIPE SIZE

- 2, 3, 4, 5, 6 [51, 76, 102, 127, 152]
- 2, 3, 4, 5, 6 [51, 76, 102, 127, 152]
- 2, 3, 4, 5, 6 [51, 76, 102, 127, 152]
- 2, 3, 4, 6 [51, 76, 102, 152]
- 6 [152]

(Specify size/type) OUTLET

- _____ IC Inside Caulk
- _____ IP Threaded
- _____ NH No-Hub
- _____ NL Neo-Loc
- _____ NL Neo-Loc

E BODY HT. DIM.

- 5-1/4 [133]
- 3-3/4 [95]
- 5-1/4 [133]
- 4-9/16 [116]
- 5-7/16 [138]

PREFIXES

- _____ ZC D.C.C.I. Body with Cast Iron Dome*

SUFFIXES

- _____ -AR Acid Resistant Epoxy Coated
- _____ -BS Bronze Mesh Screen Over Dome
- _____ -C Underdeck Clamp
- _____ -E Static Extension 1 [25] thru 4 [102] (Specify Ht.)
- _____ -EA Adjustable Extension Assembly 1-3/4 [44] thru 3-1/2 [89]
- _____ -GD Galvanized Cast Iron Dome
- _____ -SC Secondary Clamp Collar
- _____ -TC Neo-Loc Test Cap Gasket (2,3,4, [51,76,102] NL Bottom Outlet Only)
- _____ -VP Vandal Proof Secured Dome
- _____ -XJ Vertical Expansion Joint (See Z190)

* Regularly furnished unless otherwise specified.