

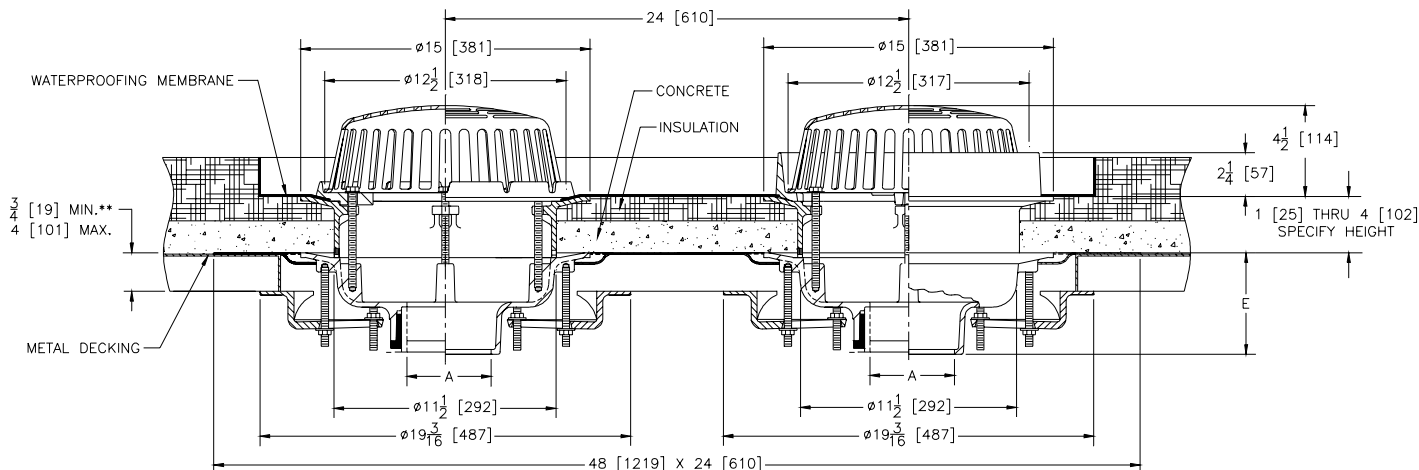


Z100-161
15 [381] DIAMETER COMBINATION MAIN ROOF
AND OVERFLOW DRAIN
WITH LOW SILHOUETTE DOMES

SPECIFICATION SHEET

TAG _____

Dimensional Data (inches and [mm]) are Subject to Manufacturing Tolerances and Change Without Notice



A- Pipe Size In.	Approx. Wt. Lbs. [kg]	Dome Open Area Sq. In. [cm ²]
2-3-4 [50-75-100]	72 [33]	103 [665]
5-6 [125-150]	74 [34]	
8 [200]	76 [34]	

ENGINEERING SPECIFICATION: ZURN Z100-161

15 [381] Diameter combination roof drain and overflow drain, Dura-Coated cast iron bodies with combination membrane flashing clamps/gravel guards, low silhouette Poly-Domes, static extensions, underdeck clamps, dual roof sump receiver, and 2 [51] high external water dam.

OPTIONS (Check/specify appropriate options)

PIPE SIZE

- 2 thru 6, 8 [50 thru 150, 200]
- 2 thru 6, 8 [50 thru 150, 200]
- 2 thru 6, 8 [50 thru 150, 200]
- 2, 3, 4 [50, 75, 100]

(Specify size/type) **OUTLET**

- _____ IC Inside Caulk
- _____ IP Threaded
- _____ NH No-Hub
- _____ NL Neo-Loc

E BODY HT. DIM.

- 5 1/4 [133]
- 3 3/4 [95]
- 5 1/4 [133]
- 4 5/8 [117]

PREFIXES

- _____ Z- D.C.C.I. Body with Poly-Dome*
- _____ ZA- D.C.C.I. Body with 6 3/4 [171] High Aluminum Dome
- _____ ZC- D.C.C.I. Body with Cast Iron Dome
- _____ ZRB- D.C.C.I. Body with Plain Bronze Dome

SUFFIXES

- | | |
|---|---|
| _____ -AC Angular Underdeck Clamp | _____ -VP Vandal Proof Secured Top |
| _____ -AR Acid Resistant Epoxy Coated Finish | _____ -W2 2 [51] Internal Water Dam |
| _____ -AW 3/4 [19] to 4 [102] Adj. Water Level Regulator | _____ -W3 3 [76] Internal Water Dam |
| _____ -BS Bronze Mesh Screen Over Dome | _____ -W4 4 [102] Internal Water Dam |
| _____ -E Static Extension 1 [25] thru 4 [102] (Specify Ht.) | _____ -XJ Vertical Expansion Joint (See Z-190) |
| _____ -EA Adjustable Extension Assembly 1 3/4 [44] thru 3 1/2 [89] | _____ -84 Stainless Steel Perforated Gravel Guard |
| _____ -ES Static Extension With Secondary Clamp | _____ -85 Stainless Steel Perforated Extension |
| _____ -G Galvanized Cast Iron | _____ -90 90° Threaded Side Outlet Body |
| _____ -GD Galvanized Cast Iron Dome | |
| _____ -HD 6 3/4 [171] High Aluminum Dome (148 Sq. In. [955 cm ²] Open Area) | |
| _____ -SC Secondary Clamping Collar | |
| _____ -SS Stainless Steel Mesh Screen Over Dome | |

*REGULARLY FURNISHED UNLESS OTHERWISE SPECIFIED
 **WITH STANDARD STUDS, LONGER STUDS AVAILABLE UPON REQUEST

REV.	DATE: 10/9/02	C.N. NO. 89975
DWG. NO. P-14930	PRODUCT NO. Z100-161	