



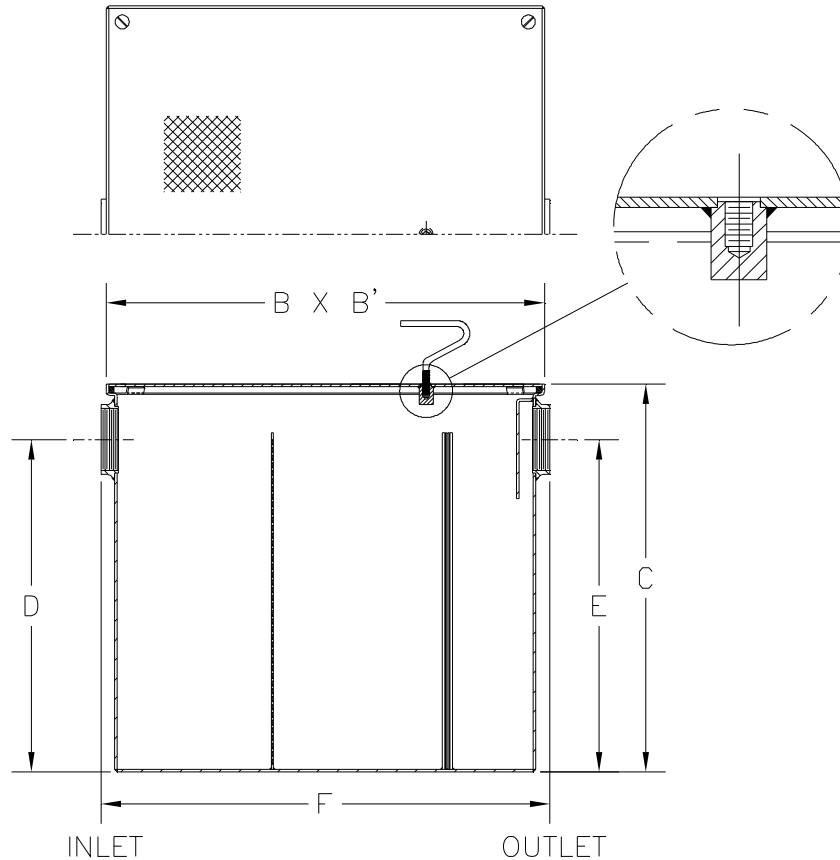
Z1185-126

LINT INTERCEPTOR WITH HIGH INLET/OUTLET

SPECIFICATION SHEET

TAG _____

Dimensional Data (inches and [mm]) are Subject to Manufacturing Tolerances and Change Without Notice



Size No. of Machines	Inlet/Outlet Size**	Flow Rate G.P.M. [L]	Approx. Wt. Lbs. [kg]	Dimensions In Inches					
				B	B'	C	D	E	F
20	4 [102]	200 [756]	404 [183]	40 [1016]	40 [1016]	35 [889]	32 [813]	28 [711]	41 [1041]

ENGINEERING SPECIFICATION: ZURN Z1185-126 Acid Resistant Coated interior and exterior fabricated steel lint interceptor with high inlet and outlet, non-skid secured cover, with stainless lint intercepting secondary screen assembly and permanent primary straining baffle. Regularly furnished with high inlet and high outlet.

OPTIONS (Check/specify appropriate options)

PREFIXES

_____ Z Acid Resistant Coated Fabricated Steel*

SUFFIXES

_____ -RS Stainless Steel Screen Replacement Assembly

REV.	DATE: 06/28/10	C.N. NO. 111308
DWG. NO. 301103		PRODUCT NO. Z1185-126

*REGULARLY FURNISHED UNLESS OTHERWISE SPECIFIED