



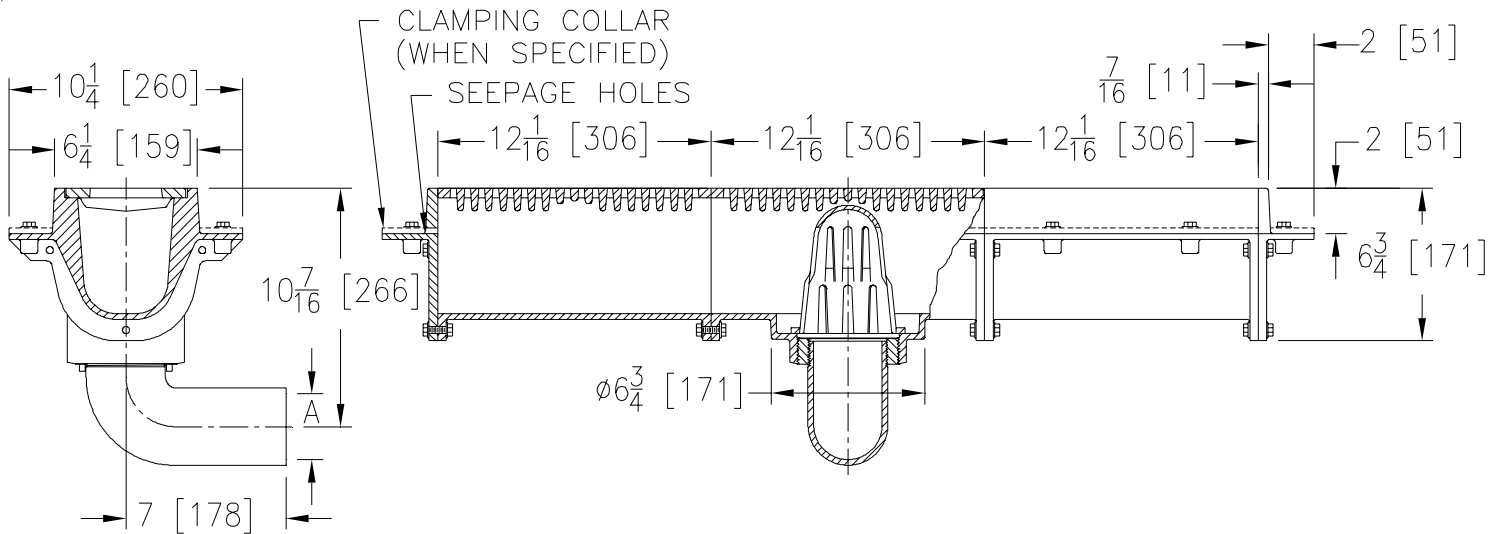
Z664-91

6 [152] WIDE MODULAR HEAVY-DUTY TRENCH DRAIN W/ 90° OUTLET

SPECIFICATION SHEET

TAG _____

Dimensional Data (inches and [mm]) are Subject to Manufacturing Tolerances and Change Without Notice



A Pipe Size	Approx. Wt. Lbs. [kg]	Grate Open Area Sq. In. [cm ²]
3 [76]	45 [20]	14 [90]

ENGINEERING SPECIFICATION: ZURN Z664-91

6 [152] Wide Top modular trench drain, Dura-Coated cast iron drain section with bottom outlet and 90° elbow adapter with 3 [76] No-Hub connection, secondary dome strainer. Both 12 [305] long outlet and extension modules are complete with integral seepage pan and loose heavy-duty slotted heel-proof grate.

OPTIONS (Check/specify appropriate options)

PREFIXES

- ___ Z D.C.C.I. Body and Top*
- ___ ZB D.C.C.I Body w/ Polished Bronze Top (Add 1/8 [3] to 10 7/16 [265] and 2 [51] Dim.)
- ___ ZN D.C.C.I Body w/ Polished Stainless Steel Top (Add 1/8 [3] to 10 7/16 [265] and 2 [51] Dim.)

SUFFIXES

- ___ -AR Acid Resisting Epoxy Coated Cast Iron (Per Section)
- ___ -C Clamp Collar (Per Section)
- ___ -DG Duresist Grate (Per Section)
- ___ -ES 12 [305] Extension Section (Specify Number of Sections Required)
- ___ -G Galvanized Cast Iron (Per Section)
- ___ -TS Top Secured with Slotted Screws (Per Section)
- ___ -VP Vandal-Proof Secured Top (Per Section)
- ___ -Y Sediment Bucket (Per Outlet Section)

*REGULARLY FURNISHED UNLESS OTHERWISE SPECIFIED

REV.	DATE: 4/16/09	C.N. NO. 99908
DWG. NO. P-15695		PRODUCT NO. Z664-91