



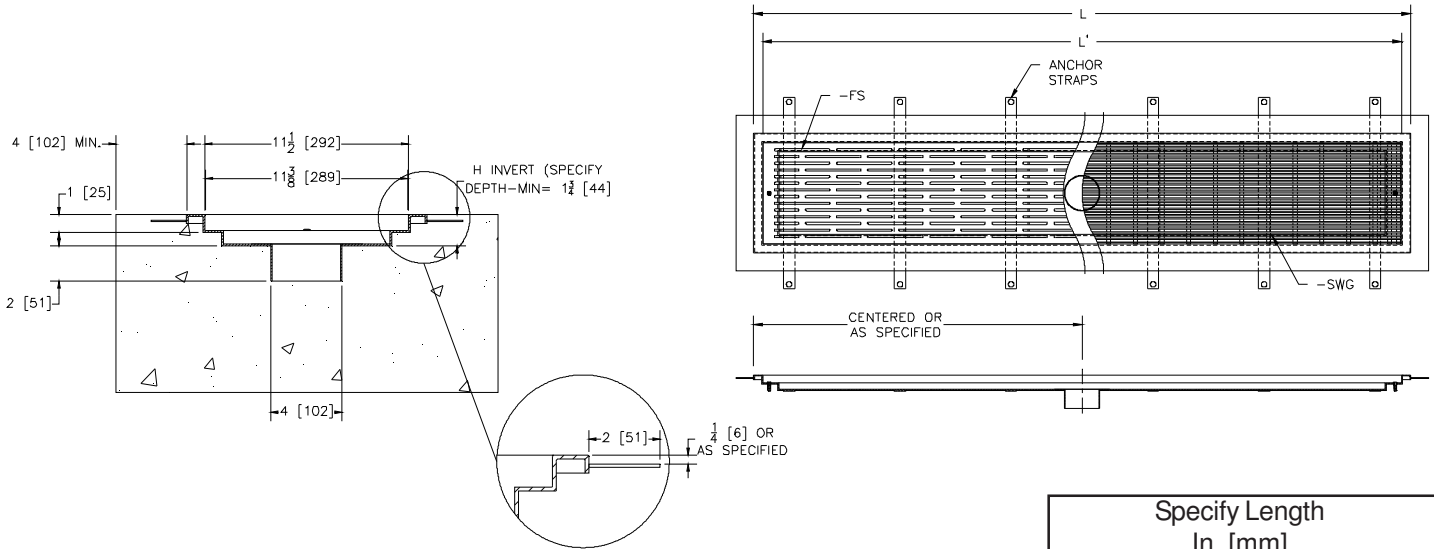
Z895-102

TRENCH DRAIN SYSTEM

SPECIFICATION SHEET

TAG _____

Dimensional Data (inches and [mm]) are Subject to Manufacturing Tolerances and Change Without Notice



**PATENT
PENDING**

Specify Length In. [mm]	
L = (L' + 2")	L'
min = 36 [914]	min = 34 [864]
max = 96 [2438]	max = 94 [2388]

ENGINEERING SPECIFICATION: The Zurn Z895-102

Channel height & length are as specified, overall channel width shall be 13-1/2" [343mm] and have an 11-3/8" [289mm] throat. Channels are made of #12 ga. fabricated stainless steel conforming to ASTM A-240 (type 316 or type 304 by request) and will include anchoring straps. The outlet on each channel will be centered unless specified otherwise. Channel to be provided with custom -SWG stainless steel wire grate, conforming to ASTM A-240 (type 316 or type 304 by request), that locks down to the channel with vandal proof flathead machine screws. This grate is rated for Class A per the DIN EN1433 top load classification, complies with both ADA and Heel Proof requirements, and has an open area of 64.9 sq. in/ft. [1373.7 sq. cm/m]. Optional -FS fabricated slotted grate has an open area of 35.91 sq. in/ft [760.1 sq. cm/m] and also complies with ADA & Heel Proof requirements.

PREFIX OPTIONS (Check/specify appropriate options)

- Z Type 304 Stainless Steel
- ZM Type 316 Stainless Steel*

SUFFIX OPTIONS (Check/specify appropriate options)

- 4NH 4 [102] No-Hub Bottom Outlet*
- 6NH 6 [152] No-Hub Bottom Outlet

Grate Options

- FS Fabricated Stainless Steel Slotted Grate (open area = 35.9 sq-in / linear foot)
- SWG Stainless Wire Grate* (open area = 64.9 sq-in / linear foot)

Miscellaneous Options

- DB Drop in bucket
- P 1/2 [13] Trap Primer Connection

* Regularly furnished unless otherwise specified.