



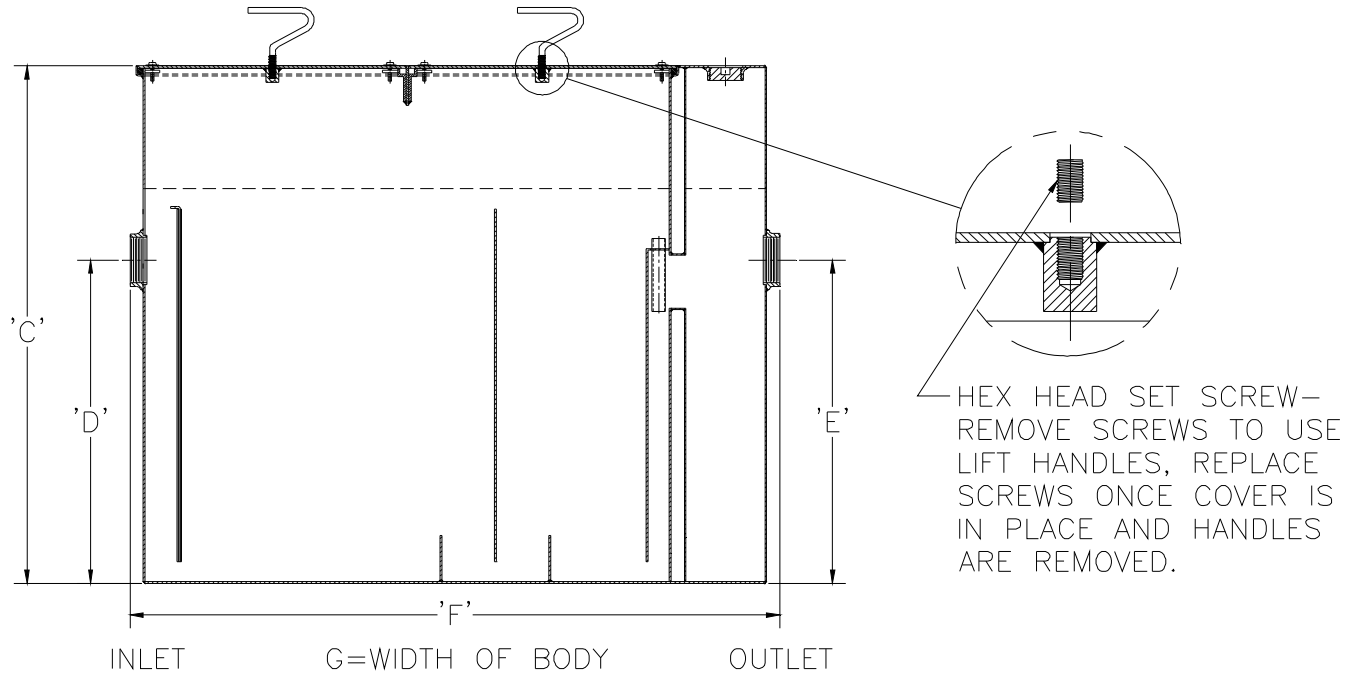
Z1172-195

SIZE 900 LARGE CAPACITY GREASE INTERCEPTOR WITH 14-3/4 [475] EXTENSION.

SPECIFICATION SHEET

TAG _____

Dimensional Data (inches and [mm]) are Subject to Manufacturing Tolerances and Change Without Notice



Size	Inlet/Outlet Size In. [mm]	Flow Rate GPM [LPM]	Capacity		Approx. Wt. Lbs. [kg]	Dimensions in Inches [mm]			
			Water Gal. [L]	Grease Lbs. [kg]		C	D/E	F	G
900	4 [102]	75 [284]	65 [246]	150 [68]	449 [204]	37-1/2 [953]	19 [483]	36 [914]	28-5/8 [727]

** Location of inlet must be maintained at the 'D' dimension listed.

ENGINEERING SPECIFICATION: ZURN Z1172-195

Large capacity acid resistant coated interior and exterior fabricated steel grease interceptor, rated at 75 GPM [284 LPM] and 150 Lbs. [68kg] grease capacity, with internal air relief by-pass, bronze cleanout plug and visible double wall trap seal with removable pressure equalizing/flow diffusing baffle. Gasketed non-skid secured cover with removable lift handles, complete with flow control fitting. Acid resistant coated interior and exterior fabricated steel extension section built integral to the interceptor body. Regularly furnished with inlet and outlet in high position.

OPTIONS (Check/specify appropriate options)

PREFIXES

- ___ Z Acid Resistant Coated Fabricated Steel*
- ___ ZS All Type 304 Fabricated Stainless Steel

SUFFIXES

- ___ -AL Aluminum cover
- ___ -HD Heavy duty traffic cover rated at 10,000 lbs. [4536 kg.] maximum safe live load.
- ___ -K Anchor flange 1-3/4 [44] down from top and 2 [51] wide. No additional extension is required.
- ___ -KC Anchor flange 1-3/4 [44] down from top and 2 [51] wide with clamp collar. No additional extension is required.
- ___ -L Angle type (Z1108-L) flow control device.

* Regularly furnished unless otherwise specified.