



# Z1201-N\_3-RYK17

17 [432] ONE PIECE RYK FOOT SUPPORT  
EZCARRY® ADJUSTABLE HORIZONTAL HIGH PERFORMANCE  
SIPHON JET NO-HUB WATER CLOSET CARRIER SYSTEM

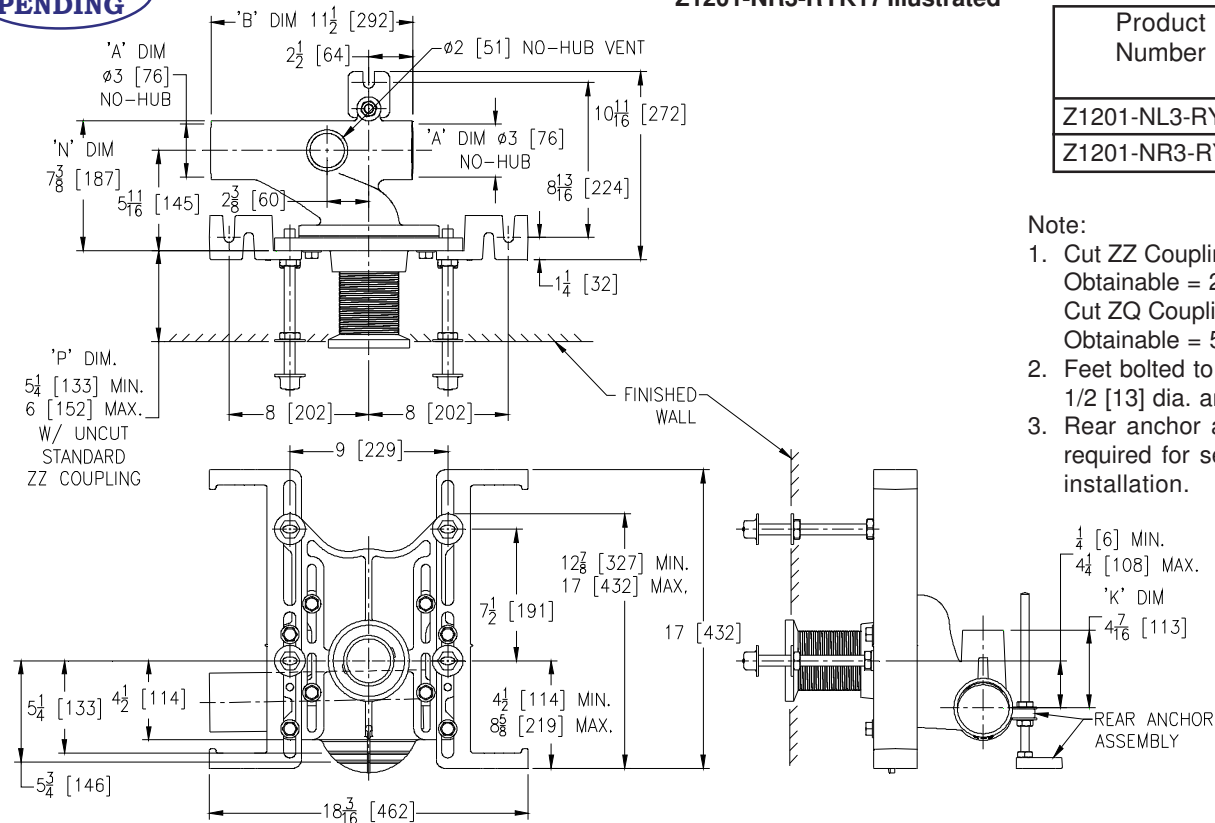
SPECIFICATION SHEET

TAG \_\_\_\_\_

**PATENT  
PENDING**

Dimensional Data (inches and [mm]) are Subject to Manufacturing Tolerances and Change Without Notice

## Z1201-NR3-RYK17 Illustrated



### Note:

1. Cut ZZ Coupling, Min. 'P' Dim. Obtainable = 2 [51]  
Cut ZQ Coupling, Min. 'P' Dim. Obtainable = 5 [127]
2. Feet bolted to floor using min. 1/2 [13] dia. anchors.
3. Rear anchor assembly required for secure installation.

### ENGINEERING SPECIFICATION: ZURN Z1201-N\_3-RYK17

EZCarry® horizontal siphon jet water closet carrier system, with high performance waterway and 3" [76 mm] no-hub connections. System includes Dura-Coated cast iron main fitting with hydro-mechanically optimized sweep and extended 2" [51 mm] vent, adjustable gasketed faceplate, floor mounted 17" [432 mm] one piece RYK foot supports, heavy-duty 1/2" [13 mm] rear anchor tie down, fixture bolts, trim, and stud protectors, bonded "Neo-Seal" gasket, and corrosion resistant, adjustable 3" [76 mm] dia. X 6" [152 mm] coupling with integral test cap designed to increase flow velocity and line carry. EZCarry® system complies with all requirements of ASME A112.6.1M up to a 500 lbs [227 kg] maximum static load rating.

### OPTIONS (Check/specify appropriate options)

- \_\_\_\_ Z1201-NL3-RYK17 3 [76] No-Hub Left Hand Inlet with Flow to Right  
\_\_\_\_ Z1201-NR3-RYK17 3 [76] No-Hub Right Hand Inlet with Flow to Left

### PREFIXES

- \_\_\_\_ Z D.C.C.I. System with Zurn ZZ Adjustable Coupling\*  
\_\_\_\_ ZQ D.C.C.I. System with NPT Faceplate, Non-Adjustable Coupling

### SUFFIXES

- \_\_\_\_ -A Auxiliary Support Assembly  
(For 'P' Dim. Greater than 18 [457])  
\_\_\_\_ -CC Corrosion Resistant Cast Iron Coupling  
(2-1/4 [57] thru 12 [305])  
\_\_\_\_ -CE EZ-Set™ Coupling (Available 6 [152], 12 [305] or  
longer when specified. Minimum length=5 [127])  
\_\_\_\_ -CL Custom Length Standard Coupling with Integral Test Cap  
(Specify Length 4, 8, 10, 12 [102, 203, 254, 305])  
\_\_\_\_ -CS 2-1/4 [57] Polymer Coupling with Integral Test Cap  
\_\_\_\_ -F Floor Mounted, Back Outlet Fixture Support  
\_\_\_\_ -G Galvanized Cast Iron  
\_\_\_\_ -JC 2 [51] Auxiliary Inlet with 1/8 Bend  
\_\_\_\_ -M Auxiliary Foot Support  
(for 'P' Dim. 10 thru 18 [254 thru 457])  
\_\_\_\_ -VP Vandal-Proof Trim  
\_\_\_\_ -45 Finishing Frame for Siphon Jet System  
\_\_\_\_ -50 Flush Valve Supply Support for Water Closets

\* Regularly furnished unless otherwise specified.