



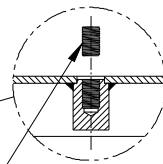
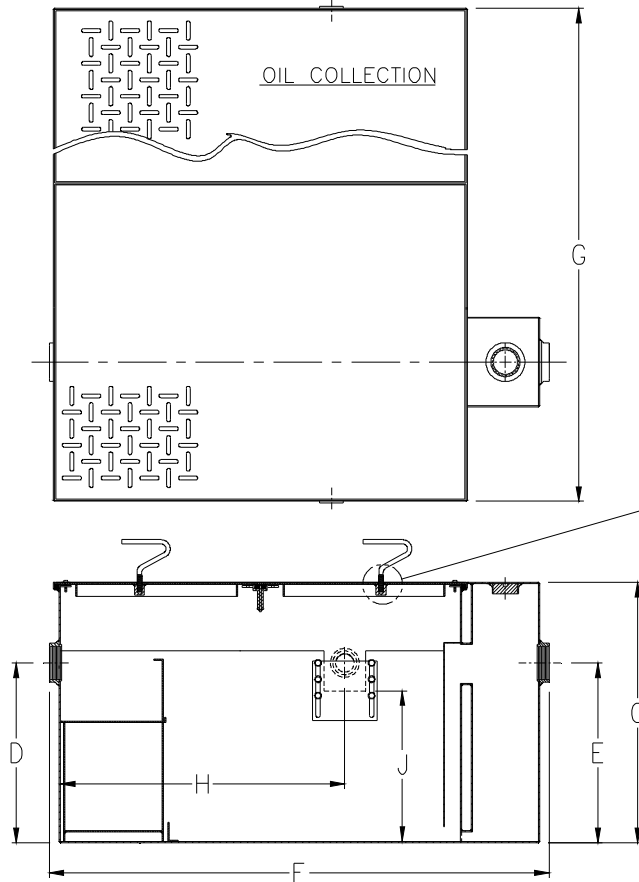
Z1188-ST-99

250 GPM LARGE CAPACITY OIL INTERCEPTOR W/ 500 GAL.
INTEGRAL STORAGE TANK & HEAVY-DUTY COVER

SPECIFICATION SHEET

TAG _____

Dimensional Data (inches and [mm]) are Subject to Manufacturing Tolerances and Change Without Notice



HEX HEAD SET SCREW—
REMOVE SCREWS TO USE
LIFT HANDLES, REPLACE
SCREWS ONCE COVER IS
IN PLACE AND HANDLES
ARE REMOVED.

Flow Rate GPM [LPM] Min.	Oil Storage Tank Cap. Gal. [L]	No. of Covers	
		Trap	Tank
250 [946]	500 [1893]	2	2

Flow Rate GPM [LPM]	Inlet/Outlet Size**	Water Capacity Gal. [L]	Approx. Wt. Lbs. [kg]	Dimensions in Inches [mm]					
				C	D/E	F	G	H	J
250 [946]	5 [127]	445 [1685]	3000 [1361]	44 [1118]	36 [914]	75-1/2 [1918]	107-3/4 [2737]	40-3/4 [1035]	32-1/2 [825]

ENGINEERING SPECIFICATION: ZURN Z1188-ST-99

Acid Resistant Coated interior and exterior fabricated steel oil interceptor, bronze cleanout plug and visible double wall trap seal, removable combination pressure equalizing/flow diffusing baffle and sediment bucket, oil draw-off, vent connections, secured gasketed heavy-duty non-skid traffic cover rated at 10,000 lbs. [4536 kg.] maximum safe live load, complete with flow control fitting and left hand integral storage tank. Regularly furnished with inlet and outlet in high position. Note: location of outlet from bottom of interceptor cannot be changed.

OPTIONS (Check/specify appropriate options)

PREFIXES

___ Z Acid Resistant Coated Fabricated Steel*

SUFFIXES

___ -E Acid resistant coated interior and exterior integral steel extension (Specify C# dim. required) for recessed installation.

* Regularly furnished unless otherwise specified.