



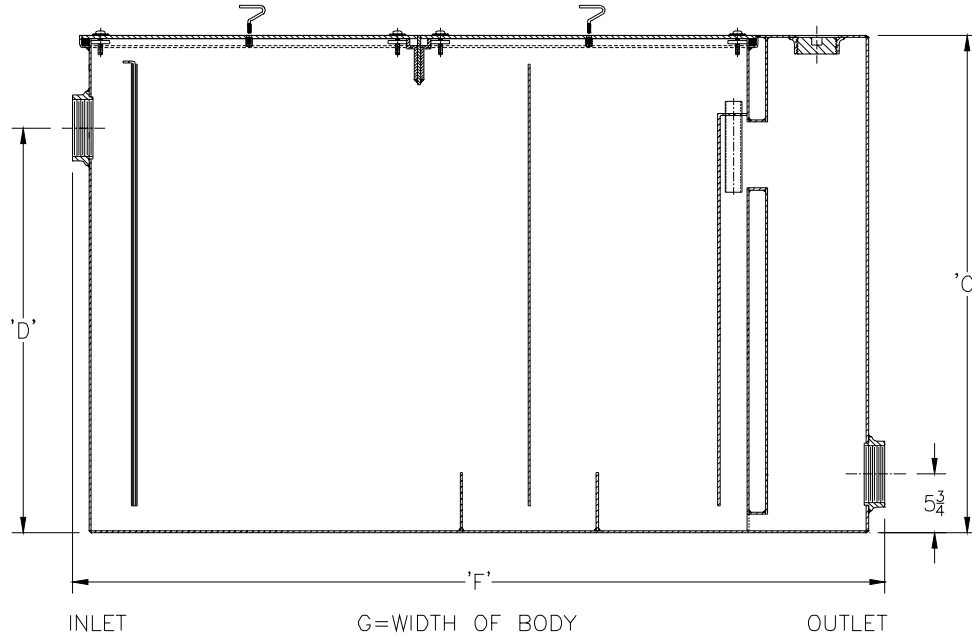
Z1172-131

LARGE CAPACITY GREASE INTERCEPTOR WITH LOW OUTLET

SPECIFICATION SHEET

TAG _____

Dimensional Data (inches and [mm]) are Subject to Manufacturing Tolerances and Change Without Notice



Size	Inlet/ Outlet Size	Flow Rate G.P.M. [L]	Capacity		No. of Covers	Approx. Wt. Lbs. [kg]	Dimensions in Inches			
			Water Gal. [L]	Grease Lbs. [kg]			C	D	F	G
1500	5 [125]	300 [1134]	665 [2514]	600 [272]	2	1770 [804]	46 1/4 [1175]	39 5/8 [1006]	80 [2032]	58 5/8 [1489]

ENGINEERING SPECIFICATION: ZURN Z1172-131 Large capacity Acid Resistant Coated interior and exterior fabricated steel grease interceptor, rated at 300 GPM and 600 lbs. grease capacity, with internal air relief by-pass, bronze cleanout plug and visible double wall trap seal with removable pressure equalizing/flow diffusing baffle. Gasketed non-skid secured cover with removable lift handles, complete with flow control fitting.

OPTIONS (Check/specify appropriate options)

PREFIXES

- _____ Z Acid Resistant Coated Fabricated Steel*
- _____ ZS All Type 304 Fabricated Stainless Steel

SUFFIXES

- _____ -AL Aluminum Cover
- _____ -E Acid Resistant Coated Interior and exterior fabricated steel extension section. (Specify 'C' Dim. required) for recessed installation.
- _____ -HD Heavy duty traffic cover rated at 10,000 lbs. maximum safe live load.
- _____ -K Anchor flange 1 3/4 [44] down from top and 2 [51] wide.
- _____ -KC Anchor flange 1 3/4 [44] down from top and 2 [51] wide with clamp collar.
- _____ -L Angle type (Z1108-L) flow control device.

REV.	DATE: 9/21/05	C.N. NO. 93800
DWG. NO. P-15201 PRODUCT NO. Z1172-131		

*REGULARLY FURNISHED UNLESS OTHERWISE SPECIFIED