



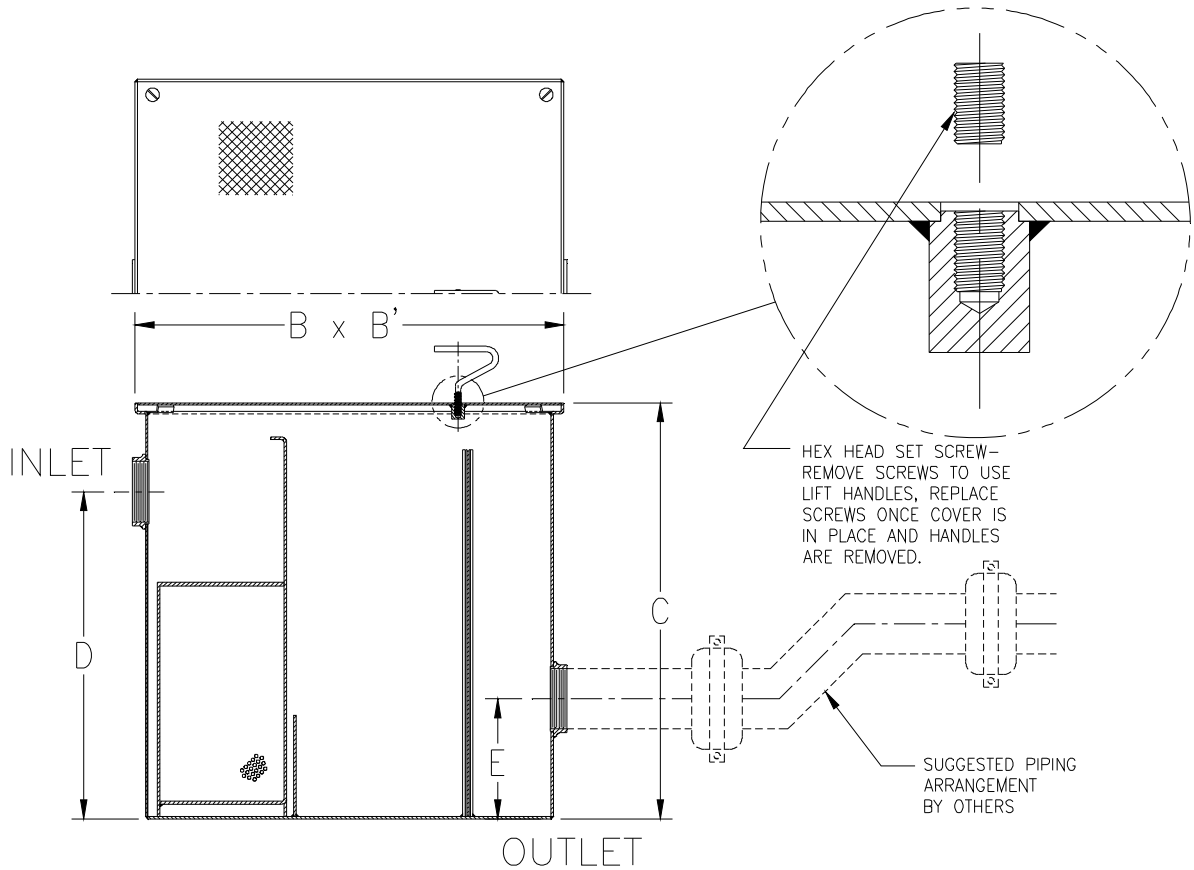
# Z1185-125

SPECIFICATION SHEET

## HAIR INTERCEPTOR W/ REMOVABLE SEDIMENT BASKET AND SECONDARY SCREEN

TAG \_\_\_\_\_

Dimensional Data (inches and [ mm ]) are Subject to Manufacturing Tolerances and Change Without Notice



Inlet/Outlet Size	Flow Rate G.P.M. [L]	Approx. Wt. Lbs. [kg]	Dimensions In Inches				
			Length B	Width B'	C	D	E
3 [76]	10 [38]	127 [58]	20[508]	24 [610]	32 [813]	24 [610]	12 [305]
3 [76]	20 [76]	190 [86]	30[762]	24 [610]	32 [813]	24 [610]	12 [305]
4 [102]	20 [76]	190 [86]	30[762]	24 [610]	32 [813]	24 [610]	12 [305]
4 [102]	25 [95]	228 [103]	36[915]	24 [610]	32 [813]	24 [610]	12 [305]
4 [102]	50 [189]	275 [125]	40[1016]	26 [660]	32 [813]	24 [610]	12 [305]

**ENGINEERING SPECIFICATION:** ZURN Z1185-125 Acid Resistant Coated interior and exterior fabricated steel hair interceptor, non-skid secured cover, with removable lift handle, removable stainless steel perforated basket, and removable secondary screen.

**OPTIONS** (Check/specify appropriate options)

**PREFIXES**

- \_\_\_\_\_ Z Acid Resistant Coated Fabricated Steel\*
- \_\_\_\_\_ ZS Type 304 Fabricated Stainless Steel

**SUFFIXES**

- \_\_\_\_\_ -E Acid Resistant Coated interior and exterior fabricated steel extension section (Specify 'C' dimension required for recessed installation).
- \_\_\_\_\_ -RS Stainless Steel Screen Replacement Assembly

<b>REV. A</b>	<b>DATE: 09/17/10</b>	<b>C.N. NO. 111718</b>
<b>DWG. NO. 300878</b>	<b>PRODUCT NO. Z1185-125</b>	

\*REGULARLY FURNISHED UNLESS OTHERWISE SPECIFIED