



Z1224-2

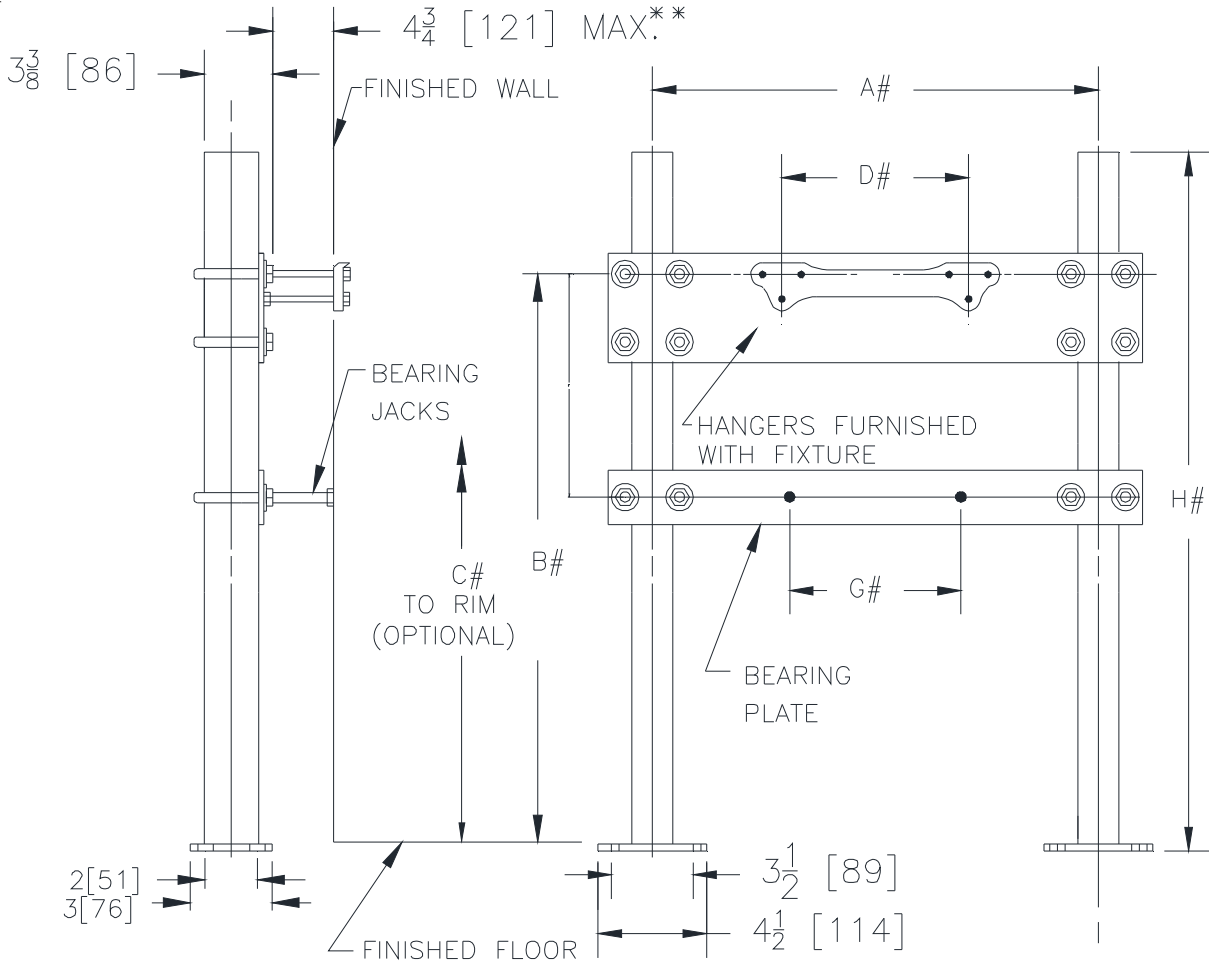
PLATE TYPE SYSTEM

LAVATORY WITH BACK

SPECIFICATION SHEET

TAG _____

Dimensional Data (inches and [mm]) are Subject to Manufacturing Tolerances and Change Without Notice



** WITH STANDARD STUD LENGTH OF 6.

REFER TO ROUGH-IN GUIDE OF SPECIFIC FIXTURE FOR DIM.

Product No.	Approx. Wt. Lbs. [kg]
Z1224-2	46 [21]

ENGINEERING SPECIFICATION: ZURNZ1224-2

Lavatory support system with top and bottom support plates. Complete with Dura-Coated rectangular steel uprights with welded feet, adjustable support plates, and mounting fasteners.

OPTIONS (Check/specify appropriate options)

PREFIXES

_____ Z Dura-Coated System with Support Plate*

SUFFIXES

- _____ -CB Carrier Bank (Per Each)
- _____ -D Back to Back System
- _____ -EZ Easy to Install Assembly
- _____ -SL Stud Length Over 6 [152] (Specify Length)
- _____ -WS Wall Support Valve Plate (Specify Valve Name and Number)

* Regularly furnished unless otherwise specified.