

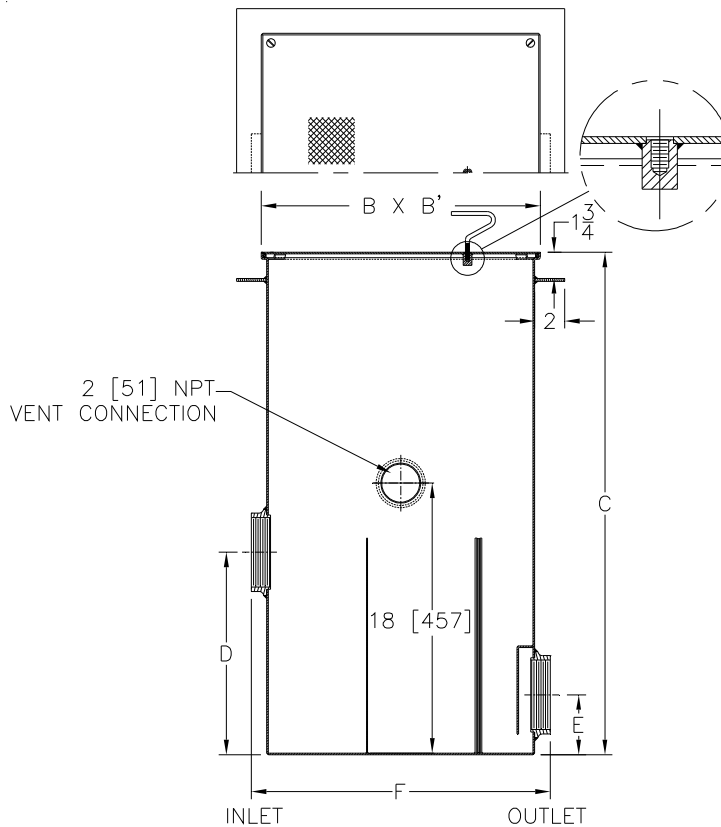


Z1185-109

LINT INTERCEPTOR WITH ANCHOR FLANGE, VENT, AND INTEGRAL EXTENSION

TAG _____

Dimensional Data (inches and [mm]) are Subject to Manufacturing Tolerances and Change Without Notice



Size No. of Machines	Inlet/Outlet Size	Flow Rate G.P.M. [L]	Approx. Wt. Lbs. [kg]	Dimensions In Inches					
				B	B'	C	D	E	F
3	4 [102]	30 [113]	145 [66]	17 [432]	17 [432]	33 1/2 [851]	13 1/2 [343]	4 [102]	17 1/4 [438]

ENGINEERING SPECIFICATION: ZURN Z1185-109 Acid Resistant Coated interior and exterior fabricated steel lint interceptor, non-skid secured cover, stainless lint intercepting secondary screen assembly and permanent primary straining baffle, anchor flange, vent connection, and built-in extension. Regularly furnished with high inlet and low outlet.

OPTIONS (Check/specify appropriate options)

PREFIXES

_____ Z Acid Resistant Coated Fabricated Steel*

SUFFIXES

_____ -RS Stainless Steel Screen Replacement Assembly

REV. A	DATE: 11/30/06	C.N. NO. 95892
DWG. NO. P-15343 PRODUCT NO. Z1185-109		

*REGULARLY FURNISHED UNLESS OTHERWISE SPECIFIED