



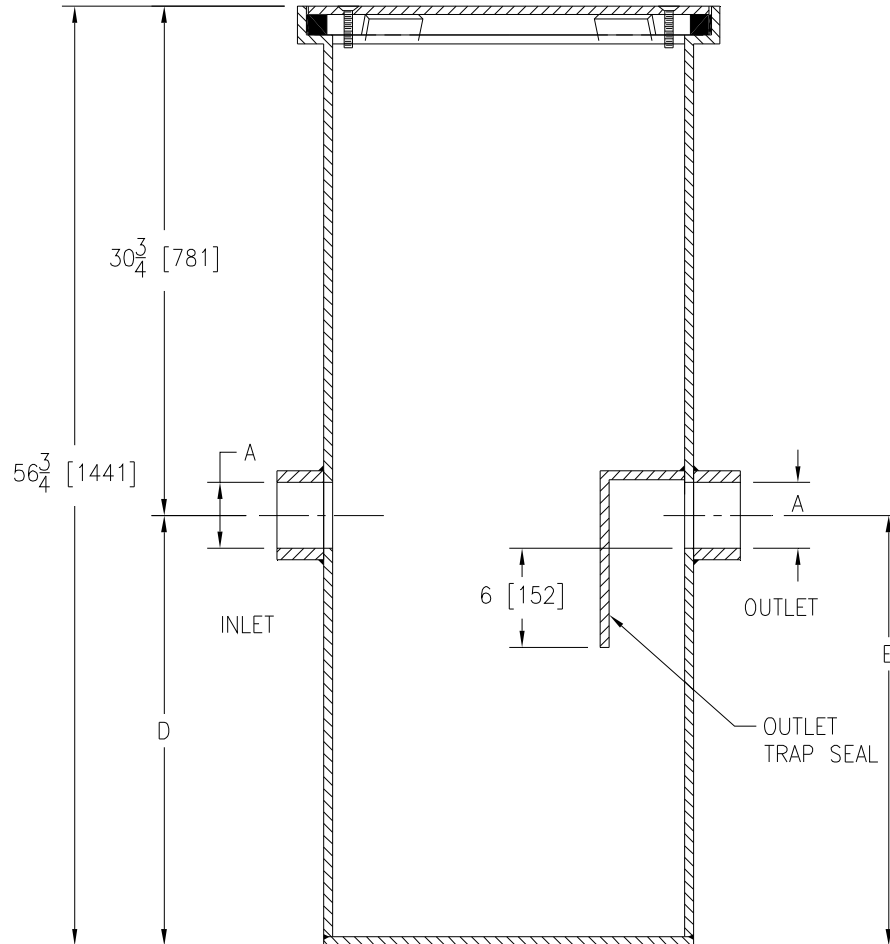
Z1187-SI-89

SAND INTERCEPTOR W/ 30 3/4 [781] INTEGRAL EXTENSION, VANDAL-PROOF SOLID COVER, AND NO-HUB CONNECTIONS

SPECIFICATION SHEET

TAG _____

Dimensional Data (inches and [mm]) are Subject to Manufacturing Tolerances and Change Without Notice



Size	Flow G.P.M. [L] (Max.)	A Pipe Size	L	D	Capacity Gal. [L] (Static)	No. of 12 x 24 [305 x 610] Grates	Width
20	20 [76]	4 [102]	24 [610]	26 [660]	60 [227]	2	24 [610]

ENGINEERING SPECIFICATION: ZURN Z1187-SI-89

Acid Resistant Coated interior and exterior fabricated steel sand interceptor with No-Hub inlet and outlet, complete with removable Heavy-Duty gasketed traffic cover, rated at 10,000 lb [4536 kg] maximum safe load, secured with vandal-proof screws, and integral extension.

OPTIONS (Check/specify appropriate options)

PREFIXES

___ Z Acid Resistant Coated Fabricated Steel*

SUFFIXES

___ -DG Duresist Grate

REV. A	DATE: 4/3/09	C.N. NO. 99871
DWG. NO. P-15583 PRODUCT NO. Z1187-SI-89		

*REGULARLY FURNISHED UNLESS OTHERWISE SPECIFIED