



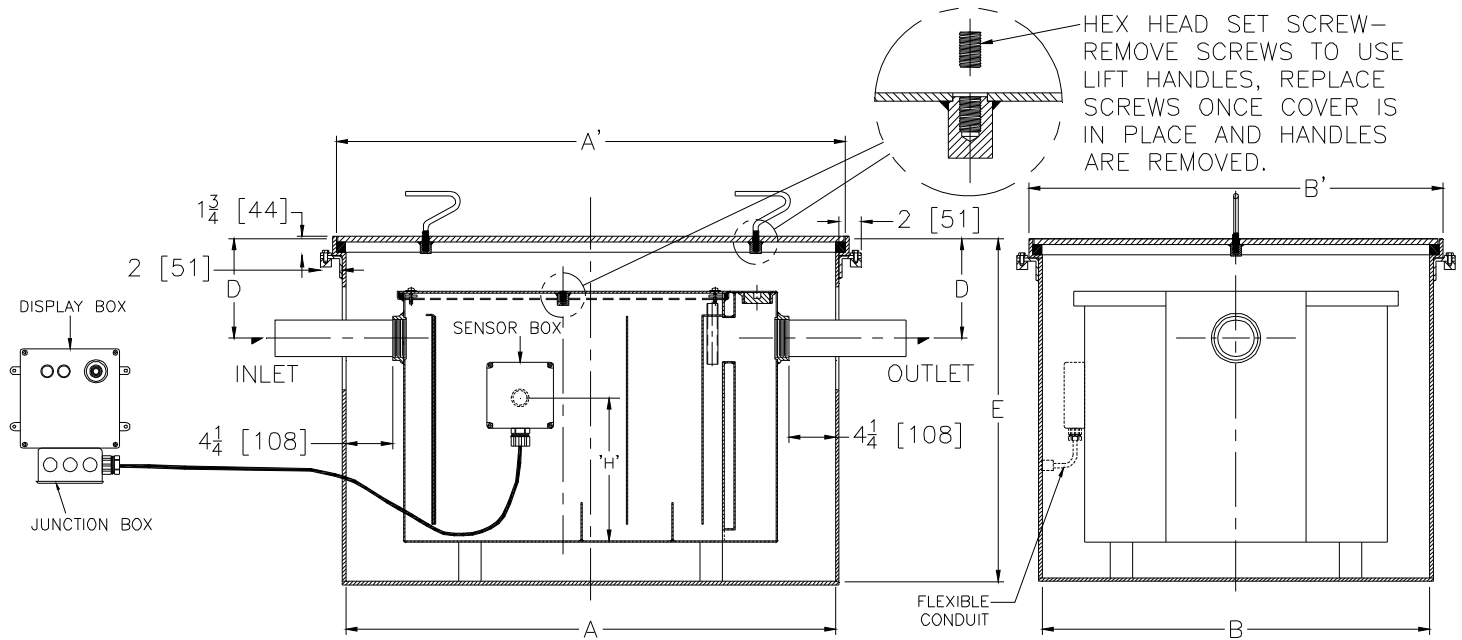
Z1172-175

SIZE 1000 LARGE CAPACITY GREASE INTERCEPTOR W/ RECESSED ENCLOSURE & USER NOTIFICATION

SPECIFICATION SHEET

TAG _____

Dimensional Data (inches and [mm]) are Subject to Manufacturing Tolerances and Change Without Notice



Size	Inlet/Outlet Size** In [mm]	Flow Rate G.P.M. [L]	Capacity		No. of Covers	Approx. Wt. Lbs. [kg]	Dimension in Inches						
			Water Gal. [L]	Grease Lbs. [kg]			A	A'	B	B'	D	E	H
1000	3 [76]	100 [379]	110 [416]	200 [91]	1	970 [440]	51 [1295]	53 [1346]	46-1/8 [1172]	48-1/8 [1222]	11-1/2 [292]	39 [991]	16-1/8 [410]

ENGINEERING SPECIFICATION: ZURN Z1172-175

Large capacity interceptor with Acid Resistant Epoxy Coated Recessing Receiver, enclosed type, equipped with fixed support brackets, gasketed non-skid cover with removable lift handles and anchor flange with clamp collar. Includes enclosed fiberglass sensor box containing an electronic grease level sensor (specify right of left side)**, a fiberglass display box with one green power light, one red grease level light, audio alarm, and junction box. For interceptor specifications see Z1172 specification sheet.

OPTIONS (Check/specify appropriate options)

PREFIXES

- ___ Z Acid Resistant Coated Fabricated Steel*
- ___ ZS All Type 304 Fabricated Stainless Steel

SUFFIXES

- ___ -L Angle type (Z1108-L) flow control device.
- ___ -T Cover recessed for tile/terrazzo. A3 [76] minimum extension height is required. (Specify required recess depth- 1/8 [3], 3/4 [19] or 1-1/4 [32]).

* Regularly furnished unless otherwise specified.