



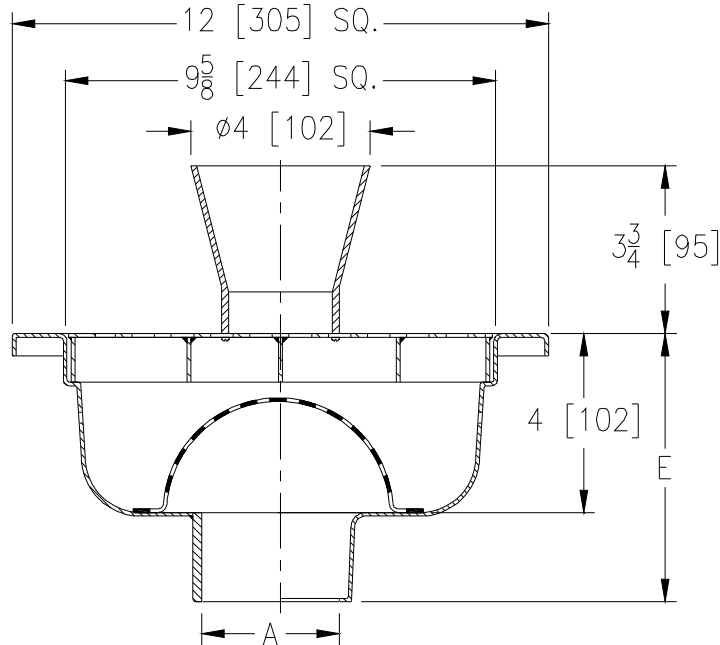
# Z1749-5

12 X 12 [305 x 305] SANI-FLOR RECEPTOR  
4 [102] SUMP DEPTH & 4 [102] DIAMETER FUNNEL

SPECIFICATION SHEET

TAG \_\_\_\_\_

Dimensional Data (inches and [ mm ]) are Subject to Manufacturing Tolerances and Change Without Notice



A - Pipe Size In. [mm]	Approx. Wt. Lbs. [kg]	Grate Open Area Sq. In. [cm <sup>2</sup> ]
2, 3, 4 [51, 76, 102]	17 [8]	23 [148]

**ENGINEERING SPECIFICATION: ZURNZ1749-5**

12" x 12" x 4" [305mm x 305mm x 102mm] deep, 16 gage, All Type 304 (CF8) Stainless Steel light-duty Sani-Flor receptor with non-tilt, loose set full grate with 1/2" [13mm] square openings, 4" [102mm] diameter x 3-3/4" [95mm] high Type 304 stainless steel funnel and anti-splash stainless steel interior dome strainer.

**OPTIONS** (Check/specify appropriate options)

**PIPE SIZE**

2, 3, 4 [51, 76, 102]  
2, 3, 4 [51, 76, 102]

(Specify size/type) **OUTLET**

\_\_\_ NH No-Hub  
\_\_\_ NL Neo-Loc

**'E' BODY HT. DIM.**

6-1/16 [154]  
5-13/16 [148]

**PREFIXES**

\_\_\_ Z Type 304 (CF8) Stainless Steel Body\*  
\_\_\_ ZM Type 316 (CF8M) Stainless Steel

**SUFFIXES**

\_\_\_ -DX Dex-o-tex Flange  
\_\_\_ -HD Extra Heavy Duty Top Frame & Grate  
\_\_\_ -HP Heel-Proof Grate  
\_\_\_ -K Anchor Flange (May not be used with -P)  
\_\_\_ -KC Anchor Flange w/ Seepage Holes and Clamp Collar (May not be used with -P)  
\_\_\_ -P 1/2 [13] Trap Primer Connection (May not be used with -K or -KC)  
\_\_\_ -TC Neo-Loc Test Cap Gasket (2, 3, 4 [51, 76, 102] NL Bottom Outlet Only)  
\_\_\_ -VP Vandal-Proof Secured Top  
\_\_\_ -Y Sediment Bucket  
\_\_\_ -YS Suspended Sediment Bucket

\* Regularly furnished unless otherwise specified.