

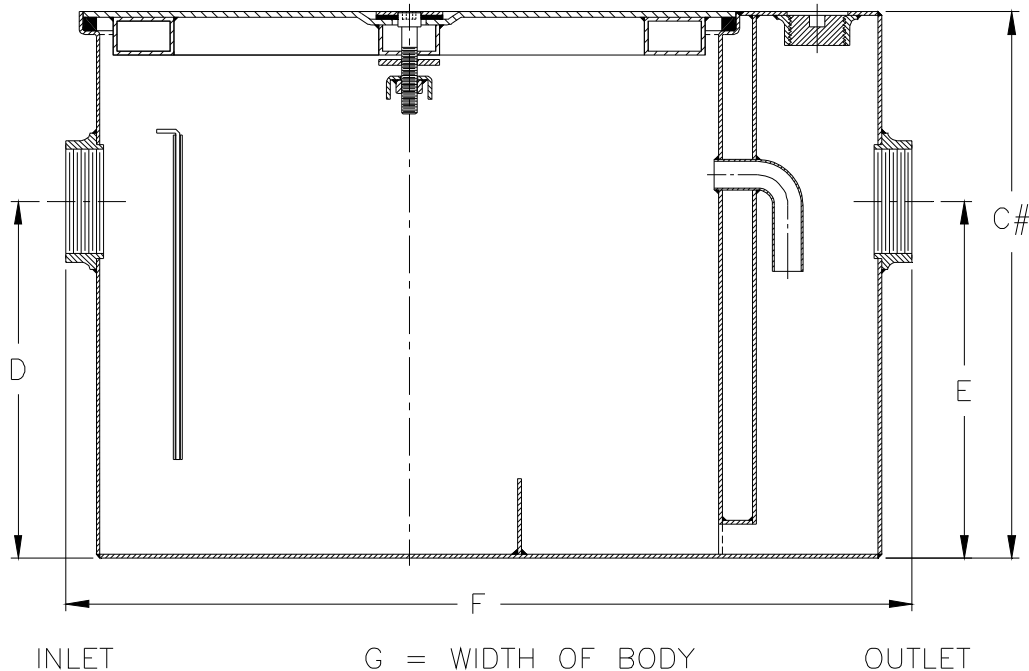


Z1170-HD GREASE INTERCEPTOR W/HEAVY-DUTY COVER

SPECIFICATION SHEET

TAG _____

Dimensional Data (inches and [mm]) are Subject to Manufacturing Tolerances and Change Without Notice



'C' Dimensions shown are greater than standard interceptor heights in order to accommodate (-HD) option.

Size	Inlet/ Outlet Size*	Flow Rate G.P.M. [L]	Capacity		Approx. Wt. Lbs. [kg]	Dimensions in Inches			
			Water Gal. [L]	Grease Lbs. [kg]		C#	D/E	F	G
100	2 [51]	4 [15]	3 [11]	8 [4]	59 [27]	13 [330]	7-1/4 [184]	20-3/8 [518]	9-7/8 [251]
200		7 [26]	5 [19]	14 [6]	74 [34]	14-1/4 [362]	8-1/8 [206]	21-3/4 [552]	11-7/8 [302]
300		10 [38]	6 [23]	20 [9]	91 [41]	14-3/4 [375]	8- 1/4 [210]	25-1/8 [638]	14 [356]
400	3 [76]	15 [57]	10 [38]	30 [14]	112 [51]	16-3/8 [416]	9-3/8 [238]	27-1/8 [689]	16-3/4 [425]
500		20 [76]	16 [60]	40 [18]	132 [60]	18 [457]	11-3/4 [298]	30 [762]	17-1/4 [438]
600		25 [94]	21 [79]	50 [23]	161 [73]	20 [500]	12-1/2 [318]	32-1/4 [819]	19-7/8 [505]
700		35 [132]	30 [113]	70 [32]	192 [87]	21-3/4 [552]	14-1/4 [362]	34-1/8 [867]	22-1/2 [572]
800		50 [189]	40 [151]	100 [45]	225 [102]	24-1/2 [622]	16 [406]	36 [914]	24-1/2 [622]

ENGINEERING SPECIFICATION: ZURN Z1170-HD Acid Resistant Coated interior and exterior fabricated steel grease interceptor, PDI, rated at _____ GPM and _____ Lbs. grease capacity, with internal air relief by-pass, bronze cleanout plug, removable pressure equalizing/flow diffusing inlet baffle, fixed bottom outlet baffle, and visible double wall trap seal. Gasketed non-skid heavy-duty secured cover rated at 10,000 lbs. [4536 kg.] safe live load, complete with center tie down assembly, with Z1108 flow control fitting. Regularly furnished with a high inlet and outlet connection. Note: Location of outlet from bottom of interceptor cannot be changed.

PREFIXES

- ____ Z Acid Resistant Coated Fabricated Steel*
____ ZS All Type 304 Fabricated Stainless Steel

SUFFIXES

- ____ -DI Dual High/Low Inlet.
____ -E Acid Resistant Coated Interior and exterior fabricated steel extension section. (Specify 'C' Dim. required) for recessed installation.
____ -K Anchor flange 1-3/4 [44] down from top and 2 [51] wide.
____ -KC Anchor flange 1-3/4 [44] down from top and 2 [51] wide with clamp collar.
____ -L Angle type (Z1108-L) flow control device with plunger.

REV. DATE: 3/14/11 C.N. NO. 110208

DWG. NO. 84341 PRODUCT NO. Z1170-HD

*REGULARLY FURNISHED UNLESS OTHERWISE SPECIFIED

ZURN INDUSTRIES, LLC ♦ SPECIFICATION DRAINAGE OPERATION ♦ 1801 Pittsburgh Ave. ♦ Erie, PA 16514

Phone: 814/455-0921 ♦ Fax: 814/454-7929 ♦ World Wide Web: www.zurn.com

In Canada: ZURN INDUSTRIES LIMITED ♦ 3544 Nashua Drive ♦ Mississauga, Ontario L4V1L2 ♦ Phone: 905/405-8272 Fax: 905/405-1292