



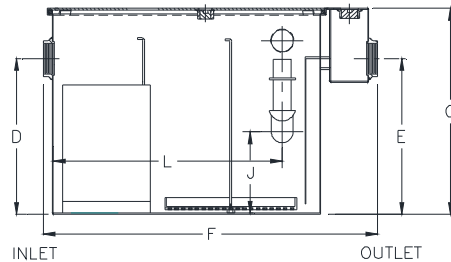
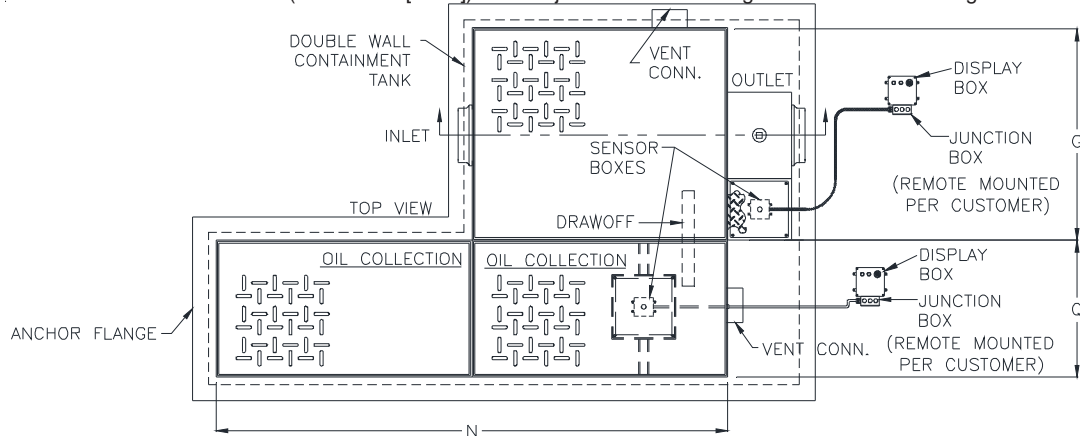
Z1188-170

LARGE CAPACITY OIL INTERCEPTOR W/ INTEGRAL STORAGE TANK, OIL LEVEL SENSOR, LEAK DETECTOR SENSOR, DOUBLE WALL CONTAINMENT TANK, HEAVY DUTY COVER, AND ANCHOR FLANGE

SPECIFICATION SHEET

TAG _____

Dimensional Data (inches and [mm]) are Subject to Manufacturing Tolerances and Change Without Notice



R = DEPTH OF STORAGE TANK

Flow Rate GPM[LPM]	Oil Storage Tank Cap. Gal. [L]
150[568]	200[757]
250[946]	300[1136]
300[1136]	400[1514]
350[1325]	500[1893]
500[1893]	500[1893]

Flow Rate GPM[LPM]	Inlet/Outlet Size**	Water Capacity Gal. [L]	App. Wt. Lbs. [Kg]	No. of Covers	Dimensions In Inches [mm]								
					C	D/E	F	G	J	L	N	Q	R
150[568]	4[102]	190[719]	1700[771]	2	33-3/4[857]	25-1/4[641]	56[1422]	41-3/8[1051]	15-3/16[386]	43-7/8[1114]	67[1702]	46[1168]	30-3/4[781]
250[946]	5[127]	460[1741]	2876[1305]	2	44[1118]	36[914]	71[1803]	51-3/8[1305]	20-1/16[510]	56-5/8[1438]	79[2007]	46[1168]	41[1041]
300[1136]	5[127]	660[2498]	3680[1669]	2	49-1/4[1251]	39-5/8[1006]	80[2032]	58-3/8[1483]	24-5/16[618]	65-5/8[1667]	79[2007]	46[1168]	48-1/2[1232]
350[1325]	6[152]	860[3255]	4360[1978]	2	53-1/2[1359]	43-7/8[1114]	87[2210]	63-5/8[1616]	20-1/4[514]	74-1/8[1883]	79[2007]	46[1168]	65-1/4[1657]
500[1893]	6[152]	1435[5423]	5940[2694]	3	60-1/4[1537]	51-5/8[1311]	104[2642]	74[1881]	23-1/4[591]	88-3/8[2245]	79[2007]	46[1168]	65-1/4[1657]

ENGINEERING SPECIFICATION: ZURN Z1188-170

Large capacity Acid Resistant Coated interior and exterior fabricated steel oil interceptor, with a fiberglass sensor box and a fiberglass leak detection sensor box each containing a float oil level sensor, two fiberglass display boxes with one green power light, one red oil level light, audible alarm and junction box, bronze cleanout plug and visible double wall trap seal, anchor flange, removable combination pressure equalizing/flow diffusing baffle and sediment bucket, horizontal baffle, adjustable oil drawoff and vent connections. Secured gasketed non-skid Heavy Traffic rated cover complete with flow control fitting and integral storage tank, and double wall containment tank. Heavy Duty Traffic cover rated at 10,000 lbs [4536 kg] maximum safe live load. Regularly furnished with inlet and outlet in high position.

OPTIONS (Check/specify appropriate options)

PREFIXES

_____Z Acid Resistant Coated Fabricated Steel*

SUFFIXES

_____E Acid Resistant Epoxy Coated Fabricated Steel integral extension (specify 'c' dimension required)

Note: 1. Power supply 120V GFCI

* Regularly furnished unless otherwise specified.

Zurn Industries, LLC | Specification Drainage Operation
 1801 Pittsburgh Avenue, Erie, PA U.S.A. 16502 · Ph. 855-663-9876, Fax 814-454-7929
 In Canada | Zurn Industries Limited
 3544 Nashua Drive, Mississauga, Ontario L4V 1L2 · Ph. 905-405-8272, Fax 905-405-1292
www.zurn.com

Rev. -
 Date: 07/17/17
 C.N. No. 137345
 Prod. | Dwg. No. Z1188-170