



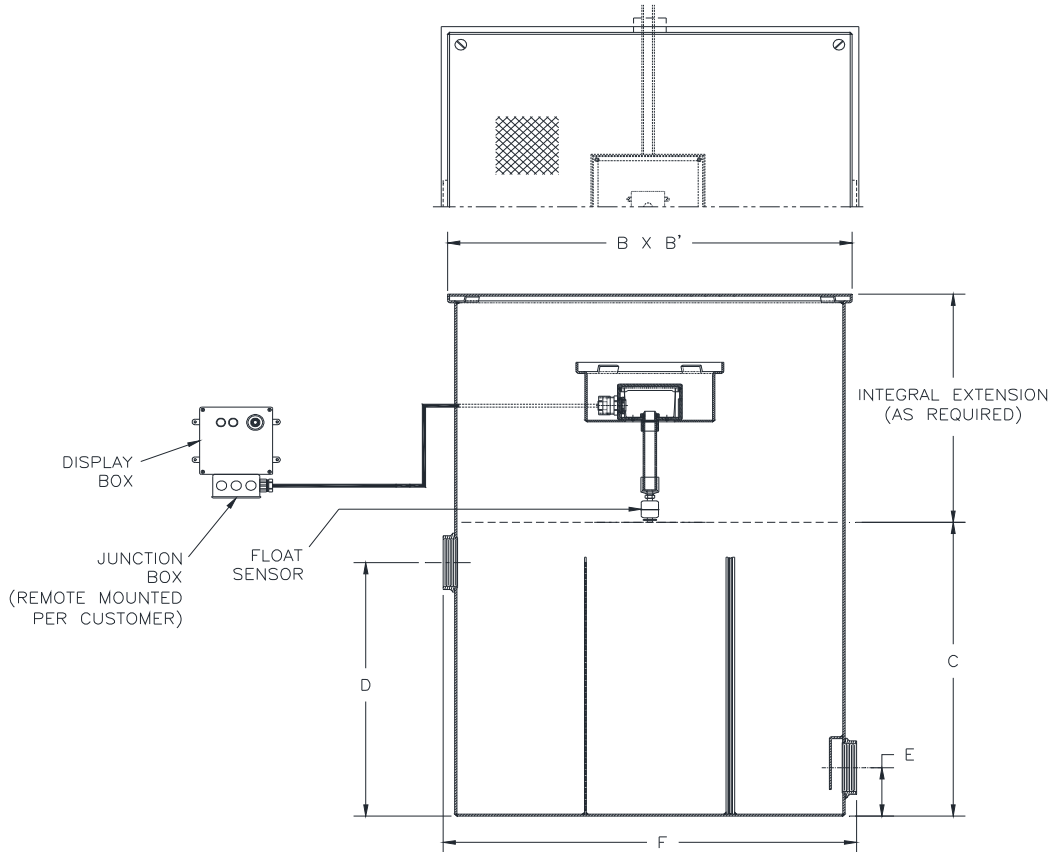
Z1185-144

LINT INTERCEPTOR W/INTEGRAL EXTENSION AND OVERFLOW FLOAT SENSOR

SPECIFICATION SHEET

TAG _____

Dimensional Data (inches and [mm]) are Subject to Manufacturing Tolerances and Change Without Notice



Size No. of Machines	Inlet/Outlet Size**	Flow Rate G.P.M. [LPM]	Approx. Wt. Lbs. [kg]+	Dimensions In Inches [mm]					
				B	B'	C	D	E	F
3	2 [51]	30 [113]	93 [42]	17 [432]	17 [432]	16-1/2 [419]	13-1/2 [343]	3-1/4 [82]	17-1/4 [438]
7	3 [76]	70 [265]	155 [70]	25 [635]	25 [635]	20 [508]	17 [432]	3-1/4 [82]	25-1/2 [648]
10	4 [102]	100 [378]	271 [123]	33 [838]	33 [838]	28 [711]	25 [635]	4 [102]	34 [864]
20	4 [102]	200 [756]	404 [183]	40 [1016]	40 [1016]	35 [889]	32 [813]	4 [102]	41 [1041]
30	6 [152]	300 [1134]	654 [297]	45 [1143]	45 [1143]	40 [1016]	36 [914]	5 [127]	46 [1168]
40	6 [152]	400 [1512]	723 [328]	48 [1219]	48 [1219]	43 [1092]	39 [991]	5 [127]	49 [1245]
50	6 [152]	500 [1890]	911 [414]	52 [1321]	52 [1321]	47 [1194]	43 [1092]	5 [127]	53 [1346]

ENGINEERING SPECIFICATION: ZURN Z1185-144

Acid Resistant Coated interior and exterior fabricated steel lint interceptor with integral extension, non-skid secured cover, stainless lint intercepting secondary screen assembly and permanent primary straining baffle. Regularly furnished with high inlet and low outlet. Interceptor includes overflow float sensor with fiberglass sensor and display box, featuring audio & visual alarms, junction box, and building management system connections.

OPTIONS (Check/specify appropriate options)

PREFIXES

_____ Z Acid Resistant Coated Fabricated Steel*

SUFFIXES

_____ RS- Stainless Steel Screen Replacement Assembly

*Weight does not include extension

* Regularly furnished unless otherwise specified.