

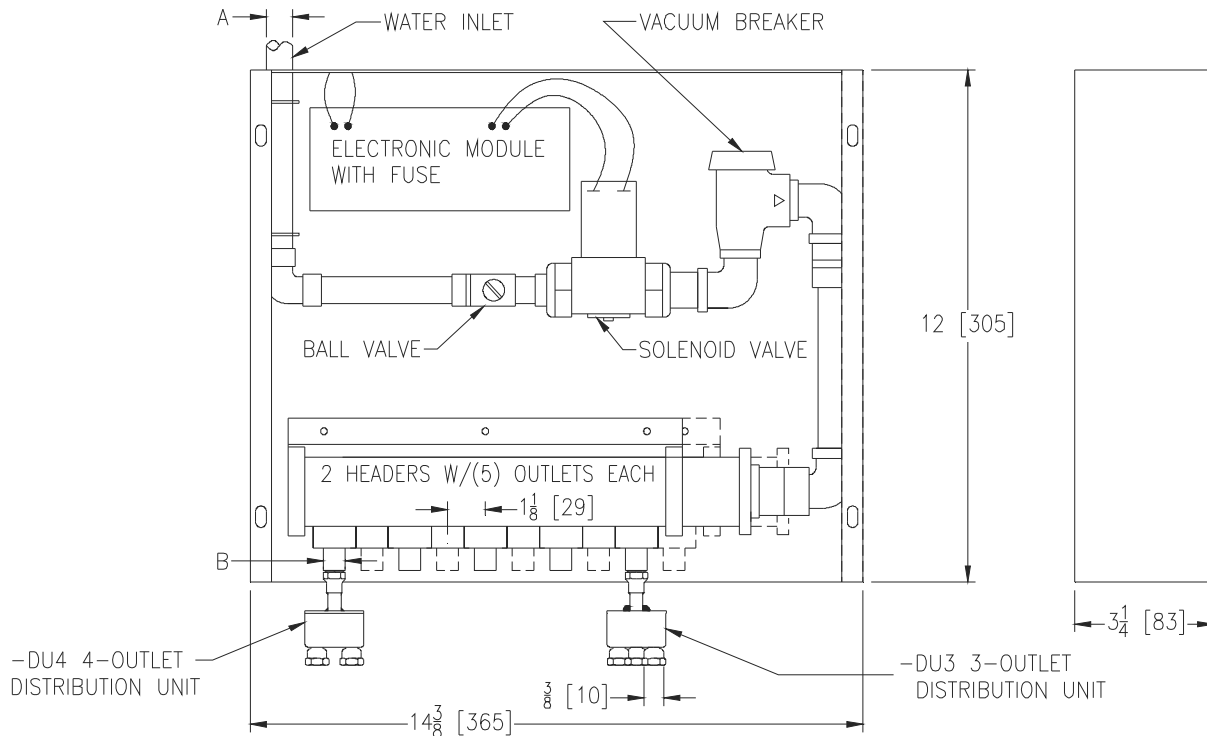


**Z1020-88**  
**ELECTRONIC TRAP PRIMER**  
**WITH 15 OUTLETS**

**SPECIFICATION SHEET**

**TAG \_\_\_\_\_**

Dimensional Data (inches and [ mm ]) are Subject to Manufacturing Tolerances and Change Without Notice



Dimensions in Inches		Approx. Wt. Lbs. [kg]
A	B	
1/2 [13]	1/2 [13]	12 [5]

**ENGINEERING SPECIFICATION: ZURN Z1020-88**

Electronic trap primer programmed as standard to provide a six second water injection to traps every twenty-four hours\*, complete with galvanized steel combination surface or recessed mount box and cover, 1/2" [13mm] solder copper inlet connection, brass ball type stop valve, slow closing 24 VAC solenoid valve with integral strainer, 120 - 24 VAC transformer, brass atmospheric vacuum breaker, PEX waterway, and two anti-scaling multi-port manifolds with five 1/2" [13mm] Female I.P.S. outlet connections. One outlet provided with -DU3 (3-Outlet Distribution Unit) and one -DU4 (4-Outlet Distribution) for a total of fifteen outlet connections.

Note: Distribution unit outlets are 3/8 N.P.T.

\* Regularly furnished unless otherwise specified.