

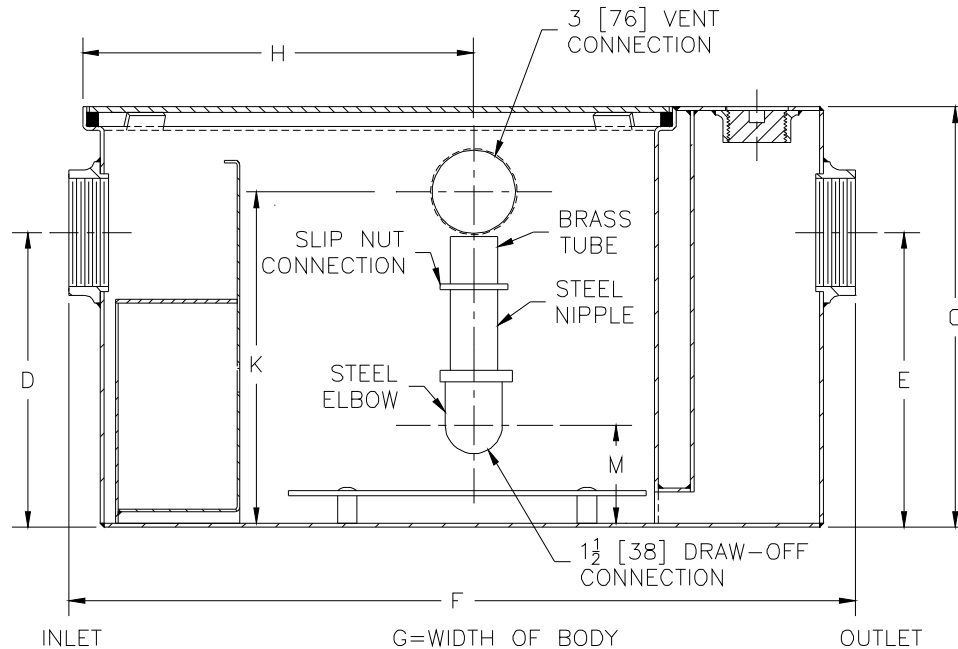


Z1186-122 OIL INTERCEPTOR

SPECIFICATION SHEET

TAG _____

Dimensional Data (inches and [mm]) are Subject to Manufacturing Tolerances and Change Without Notice



Size	Inlet/Outlet Size **	Flow Rate GPM [L]	Water Cap. Gal. [L]	Approx. Wt.Lbs. [kg]	Dimensions In Inches						
					C	D/E	F	G	H	K	M
300	2 [50]	10 [38]	7 [26]	56 [25]	16 5/8 [422]	8 1/8 [206]	25 1/8 [638]	14 [356]	11 5/8 [295]	12 3/8 [314]	4 5/16 [110]
400	2 [50]	15 [57]	9 [34]	77 [35]	17 [432]	8 1/4 [210]	25 1/4 [641]	14 1/8 [359]	11 5/8 [295]	12 3/4 [324]	4 7/16 [113]
500	3 [75]	20 [76]	10 [38]	106 [48]	18 1/2 [470]	9 3/8 [238]	27 1/8 [689]	16 3/4 [425]	13 1/4 [336]	14 1/4 [362]	5 9/16 [141]
600	3 [75]	25 [94]	16 [60]	116 [53]	21 1/4 [539]	11 3/4 [298]	30 [762]	17 1/4 [438]	16 [406]	17 [432]	6 1/4 [159]
700	3 [75]	35 [132]	21 [79]	140 [64]	22 3/4 [578]	12 1/2 [318]	32 1/4 [819]	19 7/8 [505]	16 3/8 [416]	18 1/2 [470]	6 7/16 [164]
800	3 [75]	50 [189]	30 [113]	171 [78]	27 1/4 [692]	14 1/4 [362]	34 1/8 [867]	22 1/2 [572]	17 1/4 [438]	23 [584]	8 3/16 [208]

ENGINEERING SPECIFICATION: ZURN Z1186-122 Acid Resistant Coated interior and exterior fabricated steel oil interceptor, bronze cleanout plug and visible double wall trap seal, removable combination pressure equalizing/flow diffusing baffle and sediment bucket, horizontal baffle, adjustable oil draw-off and vent connections either side, secured gasketed non-skid cover, complete with flow control fitting. Regularly furnished with inlet and outlet in high position.

Note: Location of outlet from bottom of interceptor cannot be changed.

OPTIONS (Check/specify appropriate options)

PREFIXES

____ Z Acid Resistant Coated Fabricated Steel*

SUFFIXES

- ____ -E Acid Resistant Coated Interior and exterior fabricated steel extension section. (Specify 'C' Dim. required) for recessed installation.
- ____ -HD Heavy duty traffic cover rated at 10,000 lbs. maximum safe live load.
- ____ -K Anchor flange 1 3/4 [44] down from top and 2 [51] wide. A 3 [76] minimum extension height is required when anchor flange (-K) option is specified. (Specify 'C' Dim. height required.)
- ____ -KC Anchor flange 1 3/4 [44] down from top and 2 [51] wide with clamp collar.

** Inlet and outlet sizes shown indicate standard operating sizes and flow control setting. Size #300 and #400 will have 3 [76] connections reduced to 2 [51] standard. Size #700 and #800 will have 4 [100] connections reduced to 3 [76] as standard.

REV.	DATE: 12/2/05	C.N. NO. 94324
DWG. NO. P-15229 PRODUCT NO. Z1186-122		

*REGULARLY FURNISHED UNLESS OTHERWISE SPECIFIED