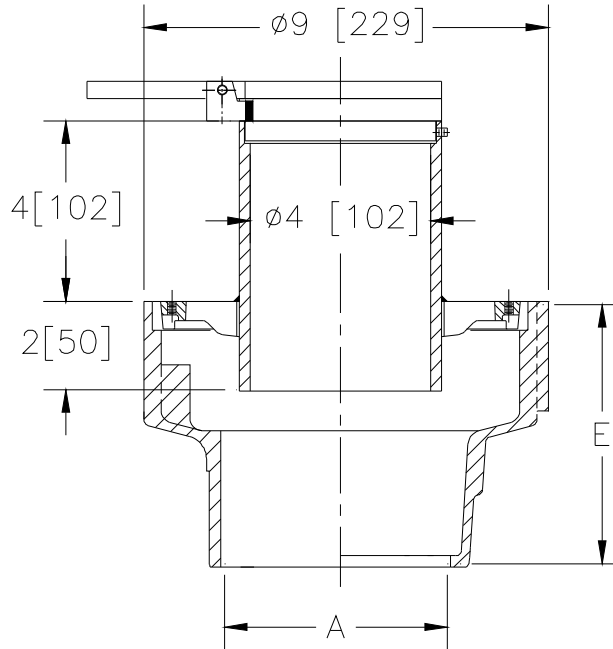




Z922
9 [229] DIAMETER MEDIUM
DUTY DRAIN

TAG _____

Dimensional Data (inches and [mm]) are Subject to Manufacturing Tolerances and Change Without Notice



A- Pipe Size In.	Approx. Wt. Lbs.[kg]
2-3-4[51-76-102]	15 [6.8]

ENGINEERING SPECIFICATION: ZURN Z922

9 [229] Diameter top drain, Dura-Coated cast iron body with bottom outlet, and medium duty slotted grate, 4 [102] waste receptacle with hinged cover/foot pedal.

OPTIONS (Check/specify appropriate options)

PIPE SIZE	(Specify size/type) OUTLET	'E' BODY HT. DIM.
2-3-4 [76-102-152]	___ IC Inside Caulk	5 3/4 [146]
2-3-4 [76-102-152]	___ IG Inside Caulk w/Sealtrol Gskt.	5 3/4 [146]
2-3-4 [76-102-152]	___ IP Threaded	4 [102]
2-3-4 [76-102-152]	___ NH No-Hub	5 3/4 [146]
2-3-4 [76-102-152]	___ NL Neo-Loc	5 1/8 [130]

PREFIXES

- ___ **Z** D.C.C.I. Body and Grate*
- ___ **ZB** D.C.C.I. Body with Polished Bronze Grate (Add 3/16 [5] to E Dim.)
- ___ **ZN** D.C.C.I. Body with Polished Nickel Bronze Grate (Add 3/16 [5] to E Dim.)

SUFFIXES

- ___ **-AR** Acid Resisting Epoxy Coated Finish
- ___ **-G** Galvanized Cast Iron
- ___ **-P** Trap Primer Connection
- ___ **-V** Backwater Valve (See Z1099)
- ___ **-VP** Vandal Proof Secured Top
- ___ **-90** 90° Threaded Side Outlet Body (2 [51] thru 4 [102])

REV. A	DATE: 10/12/04	C.N. NO. 92654
DWG. NO. 67090	PRODUCT NO. Z922	

*REGULARLY FURNISHED UNLESS OTHERWISE SPECIFIED