



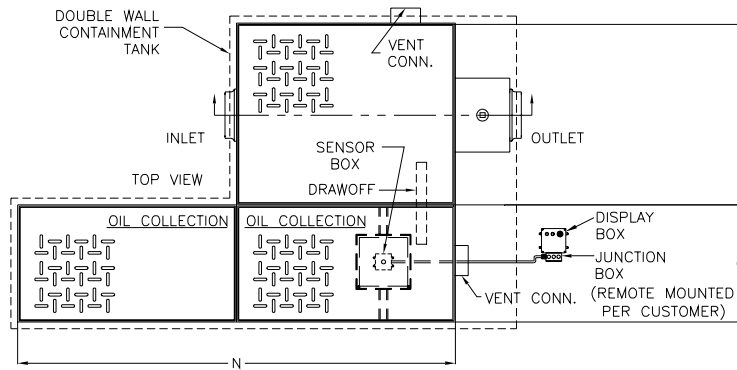
# Z1188-147

SPECIFICATION SHEET

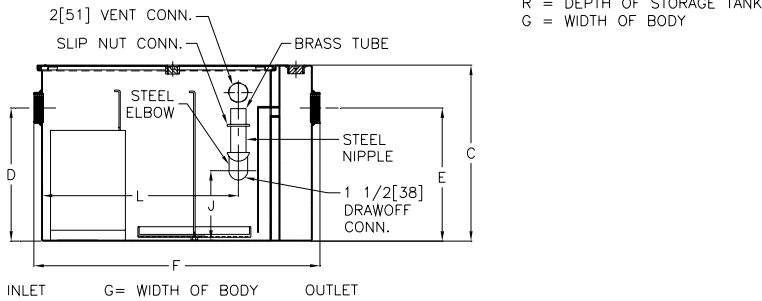
## OIL INTERCEPTOR W/ INTEGRAL STORAGE TANK, OIL LEVEL SENSOR & DOUBLE WALL CONTAINMENT

TAG \_\_\_\_\_

Dimensional Data (inches or [ mm ]) are Subject to Manufacturing Tolerances and Change Without Notice



Flow Rate GPM[L]Min.	Oil Storage Tank Cap. Gal. [L]	No. of Covers	
		Trap	Tank
75 [284]	100 [379]	1	1
100 [379]	200 [757]	1	1
125 [473]	200 [757]	1	1
150 [568]	200 [757]	2	2
200 [757]	300 [1136]	2	2
250 [946]	300 [1136]	2	2
300 [1136]	300 [1136]	2	2
350 [1325]	500 [1893]	2	2
400 [1514]	500 [1893]	2	2
450 [1703]	500 [1893]	2	2
500 [1893]	500 [1893]	2	2



Flow Rate GPM [L] Min	Inlet/ Outlet Size**	Water Capacity Gal. [L]	App. Wt. Lbs. [Kg]	Dimensions In Inches								
				C	D/E	F	G	J	L	N	Q	R
75 [284]	3 [76]	65 [246]	332 [151]	22 3/4 [578]	18 1/2 [470]	36 [914]	28 5/8 [727]	8 [203]	25 3/4 [654]	26 [660]	46 [1168]	28 5/8 [727]
100 [378]	3 [76]	110 [416]	432 [196]	27 [686]	23 [584]	42 3/4 [1086]	33 5/8 [854]	10 [254]	30 1/8 [765]	67 [1702]	46 [1168]	32 [813]
125 [472]	3 [76]	150 [567]	780 [354]	30 1/8 [765]	24 1/2 [622]	49 1/4 [1251]	40 [1016]	14 1/4 [362]	36 5/8 [930]	67 [1702]	46 [1168]	32 [813]
150 [567]	4 [102]	190 [719]	888 [403]	30 3/4 [781]	25 1/4 [641]	56 [1422]	41 3/8 [1051]	14 [356]	43 7/8 [1114]	67 [1702]	46 [1168]	32 [813]
200 [756]	4 [102]	265 [1003]	1055 [479]	35 1/2 [902]	29 7/8 [759]	61 [1549]	43 5/8 [1108]	18 [457]	46 5/8 [1184]	79 [2007]	46 [1168]	41 [1041]
250 [945]	5 [127]	460 [1741]	1438 [652]	41 [1041]	36 [914]	71 [1803]	51 3/8 [1305]	20 [508]	56 5/8 [1438]	79 [2007]	46 [1168]	41 [1041]
300 [1134]	5 [127]	660 [2498]	1840 [835]	46 1/4 [1175]	39 5/8 [1006]	80 [2032]	58 3/8 [1483]	20 5/8 [524]	65 5/8 [1667]	79 [2007]	46 [1168]	41 [1041]
350 [1323]	6 [152]	860 [3255]	2180 [989]	50 1/2 [1283]	43 7/8 [1114]	87 [2210]	63 5/8 [1616]	20 1/4 [514]	74 1/8 [1883]	79 [2007]	46 [1168]	65 1/4 [1657]
400 [1512]	6 [152]	1090 [4126]	2536 [1150]	54 1/4 [1378]	47 5/8 [1210]	94 [2388]	67 [1702]	20 1/2 [521]	79 1/8 [2010]	79 [2007]	46 [1168]	65 1/4 [1657]
450 [1701]	6 [152]	1275 [4826]	2816 [1277]	55 1/4 [1403]	48 5/8 [1235]	100 [2540]	72 [1829]	22 1/4 [565]	85 3/8 [2169]	79 [2007]	46 [1168]	65 1/4 [1657]
500 [1890]	6 [152]	1435 [5423]	2970 [1347]	57 1/4 [1454]	51 5/8 [1311]	104 [2642]	74 [1880]	23 1/4 [591]	88 3/8 [2245]	79 [2007]	46 [1168]	65 1/4 [1657]

**ENGINEERING SPECIFICATION:** ZURN Z1188-147 Large capacity Acid Resistant Coated interior and exterior fabricated steel oil interceptor, with bronze cleanout plug and visible double wall trap seal, removable combination pressure equalizing/flow diffusing baffle and sediment bucket, horizontal baffle, adjustable oil drawoff and vent connections. Complete with secured gasketed non-skid cover, flow control fitting, integral storage tank, fiberglass display and sensor box with float oil level sensor and double wall containment tank. Regularly furnished with inlet and outlet in high position.

**OPTIONS** (Check/specify appropriate options)

**PREFIXES**

\_\_\_ **Z** Acid Resistant Coated Fabricated Steel\*

**SUFFIXES**

- \_\_\_ **E** Acid Resistant Coated interior and exterior fabricated steel extension section. (Specify 'C' Dim. required) for recessed installation.
- \_\_\_ **HD** Heavy duty traffic cover rated at 10,000 lbs [4536] kg. maximum safe live load.
- \_\_\_ **K** Anchor flange 1 3/4 [44] down from top and 2 [51] wide.
- \_\_\_ **KC** Anchor flange 1 3/4 [44] down from top and 2 [51] wide with clamp collar.

**Note:**

1. Double wall construction will extend the overall length and width of the unit by 3 [76] per side and increase the overall depth by 3 [76].

\*REGULARLY FURNISHED UNLESS OTHERWISE SPECIFIED

<b>REV.</b>	<b>DATE: 02/28/07</b>	<b>C.N. NO. 96263</b>
<b>DWG. NO. P-15385</b>	<b>PRODUCT NO. Z1188-147</b>	