



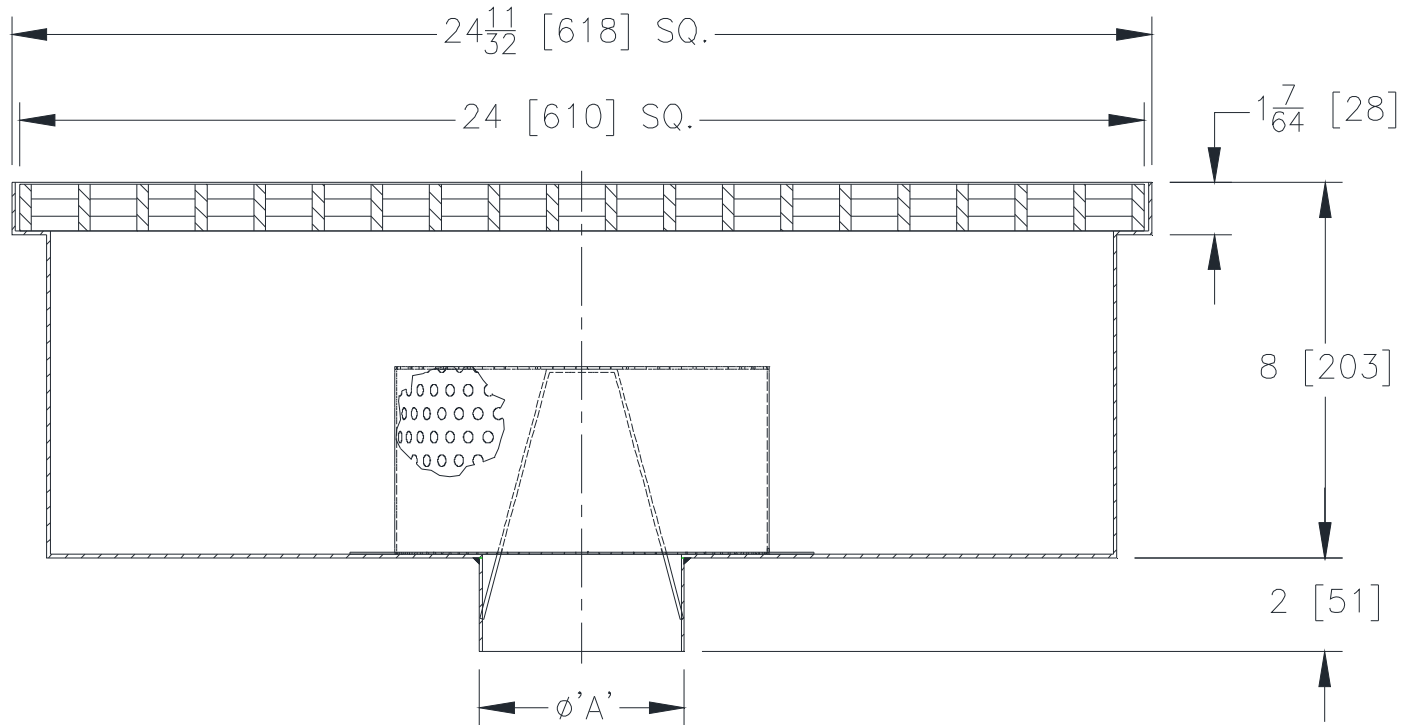
# Z1761-106

24-5/16 [618] SQUARE KETTLE DRAIN W/ 8 [203]  
SUMP DEPTH AND PERFORATED STAINLESS STEEL  
DOME STRAINER

SPECIFICATION SHEET

TAG \_\_\_\_\_

Dimensional Data (inches and [ mm ]) are Subject to Manufacturing Tolerances and Change Without Notice



A Pipe Size In. [mm]	Approx. Wt. Lbs. [kg]	Grate Open Area Sq. In. [cm <sup>2</sup> ]
4,6,8 [102,152,203]	72 [33]	425 [2742]

**ENGINEERING SPECIFICATION:** ZURNZS1761-106  
24-5/16" [618mm] Square x 8" [203mm] deep, 14 gage, all Type 304 (CF8) stainless steel light duty kettle drain with, loose set full grate and perforated stainless steel dome strainer.

### OPTIONS (Check/specify appropriate options)

**PIPE SIZE** \_\_\_\_\_ (Specify size) **OUTLET**  
4,6,8 [102,152,203] \_\_\_\_\_ NH No-Hub

### PREFIXES

- \_\_\_ Z A.R.E. Coated Fabricated Steel Body and Type 304 (CF8) Stainless Steel Grate
- \_\_\_ ZS Type 304 (CF8) Stainless Steel Body and Grate\*
- \_\_\_ ZM Type 316 (CF8M) Stainless Steel Body and Grate

\* Regularly furnished unless otherwise specified.