



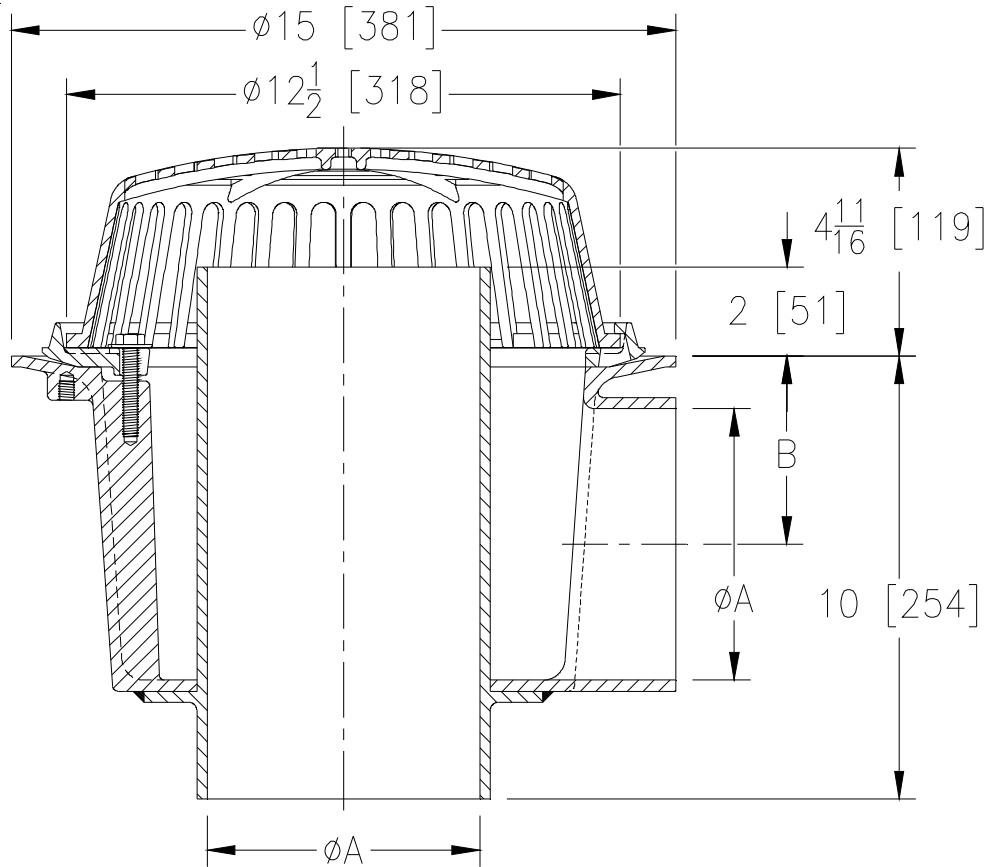
Z103-2OF

15 [381] DIAMETER DEEP SUMP DUAL OUTLET ROOF DRAIN W/ LOW SILHOUETTE DOME AND 2 [51] HIGH OVERFLOW PIPE

SPECIFICATION SHEET

TAG _____

Dimensional Data (inches and [mm]) are Subject to Manufacturing Tolerances and Change Without Notice



Dimensions in In [mm]		Approx Wt. lbs [kg]	Dome Open Area in ² [cm ²]
A Pipe Size	B		
3 [76]	5-9/16 [141]	58 [26]	103 [665]
4 [102]	5-1/16 [129]		
6 [152]	4 [102]		

ENGINEERING SPECIFICATION: ZURN Z103-2OF

15" [381mm] Diameter dual outlet roof drain with 90° primary outlet connection. Dura-Coated cast iron deep sump body with combination membrane flashing clamp/gravel guard, 2" [51mm] high overflow pipe and low silhouette cast iron dome.

OPTIONS (Check/specify appropriate options)

PIPE SIZE 3,4,6 [76,102,152] (Specify size) **OUTLET** _____ NH No-Hub

PREFIXES
 _____Z D.C.C.I. Body w/ Cast Iron Dome*

SUFFIXES

_____AR	Acid Resistant Epoxy Coated Finish	_____SS	Stainless Mesh Screen over Dome
_____C	Underdeck Clamp	_____VP	Vandal-Proof Secured Top
_____DP	Top-Set® Deck Plate (Replaces both the -C & -R)	_____45	45° Primary Outlet Connection (3 & 4 [76,102] Pipe only)
_____E	Static Extension 1 [25] thru 4 [102] (Specify Ht)	_____84	Stainless Steel Perforated Gravel Guard
_____G	Galvanized Cast Iron		

* Regularly furnished unless otherwise specified.