



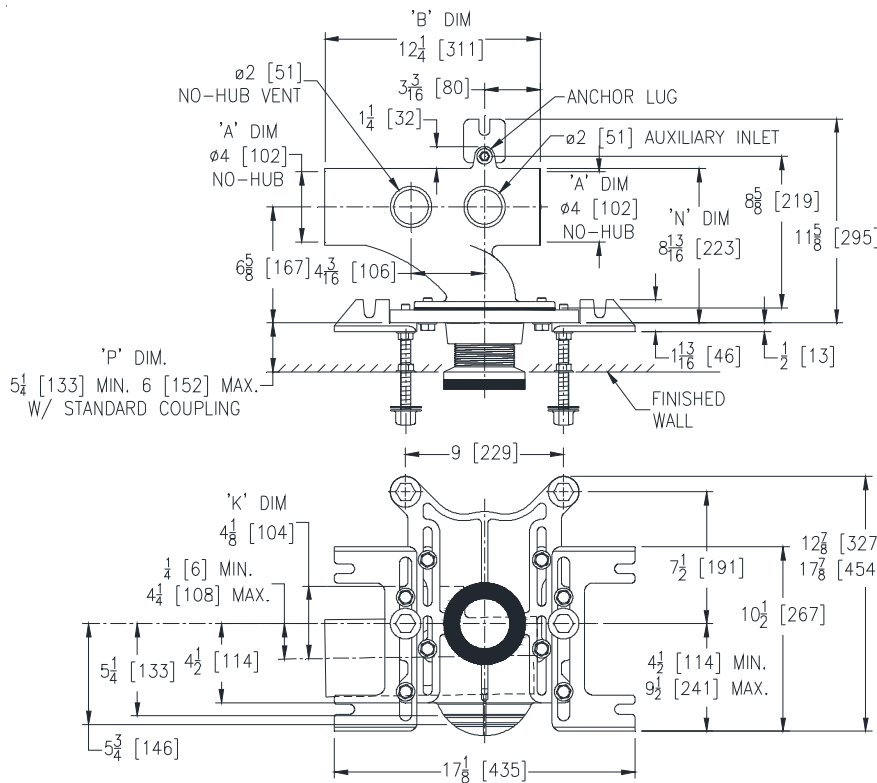
Z1201-N_4-JC

EZCARRY™ ADJUSTABLE HORIZONTAL HIGH
PERFORMANCE SIPHON JET NO-HUB WATER CLOSET
CARRIER SYSTEM W/ 2 [51] AUXILIARY INLET W/ 1/8 BEND

SPECIFICATION SHEET

TAG _____

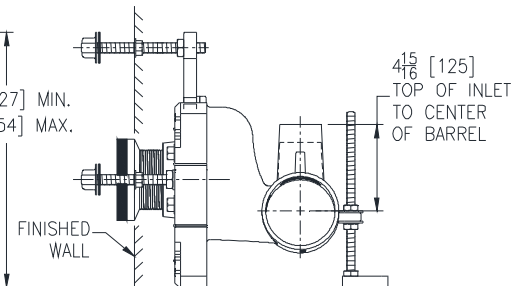
Dimensional Data (inches and [mm]) are Subject to Manufacturing Tolerances and Change Without Notice



Product Number	Approx. Wt. lbs [kg]
Z1201-NL4-JC	51 [24]
Z1201-NR4-JC	51 [24]

Note:

1. Z coupling, Min. 'P' Dim. Obtainable=2 [51]
ZQ coupling, Min. 'P' Dim. Obtainable=5 [127]
2. Feet bolted to floor using min. 1/2 [13] dia. anchors.
3. Rear anchor foot required for secure installation.



Z1201-NR4-JC Illustrated

ENGINEERING SPECIFICATION: ZURN Z1201-N_4-JC

EZCarry™ horizontal siphon jet water closet carrier system with high performance waterway and 4" [102mm] no-hub connections. System includes Dura-Coated cast iron main fitting with hydro-mechanically optimized sweep, 2" [51] auxiliary inlet with 1/8 bend, and extended 2" [51mm] vent, adjustable gasketed faceplate, universal floor mounted pre-fab slotted foot supports, heavy-duty 1/2" [13mm] rear anchor tie down, fixture bolts, trim, stud protectors, bonded "Neo-Seal" gasket, and corrosion resistant, adjustable 3" [76mm] dia. X 6" [152mm] coupling with integral test cap designed to increase flow velocity and line carry. EZCarry system complies with the requirements of ASME A112.6.1M up to a 500 lbs [227 kg] static load rating.

OPTIONS (Check/specify appropriate options)

___ Z1201-NL4	4 [102] No-Hub Left Hand Inlet with Flow to Right
___ Z1201-NR4	4 [102] No-Hub Right Hand Inlet with Flow to Left

PREFIXES

___ Z	D.C.C.I. System with Zurn ZZ Adjustable Coupling*
___ ZQ	D.C.C.I. System with NPT Faceplate, Non-Adjustable Coupling

SUFFIXES

___ -A	Auxiliary Support Assembly (For 'P' Dim. Greater than 18 [457])	___ -F	Floor Mounted, Back Outlet Fixture Support
___ -CC	Corrosion Resistant Cast Iron Coupling (2-1/4 [57] to 12 [305])	___ -G	Galvanized Cast Iron
___ -CE	EZ-Set™ Coupling (Available 6 [152], 12 [305] or longer when specified. Minimum length=5 [127])	___ -M	Auxiliary Foot Support (for 'P' Dim. 10 thru 18 [254 thru 457])
___ -CL	Custom Length Standard Coupling with Integral Test Cap (Specify Length 4, 8, 10, 12 [102, 203, 254, 305])	___ -RYK	Unistrut Pre-Fab Foot Support
___ -CS	2-1/4 [57] Polymer Coupling with Integral Test Cap	___ -RYK17	One Piece Unistrut Pre-Fab Foot
		___ -VP	Vandal-Proof Trim
		___ -45	Finishing Frame for Siphon Jet System
		___ -50	Flush Valve Supply Support for Water Closets

* Regularly furnished unless otherwise specified.

Zurn Industries, LLC | Specification Drainage Operation
1801 Pittsburgh Avenue, Erie, PA U.S.A. 16502 · Ph. 855-663-9876, Fax 814-454-7929
In Canada | Zurn Industries Limited
3544 Nashua Drive, Mississauga, Ontario L4V 1L2 · Ph. 905-405-8272, Fax 905-405-1292
www.zurn.com

Rev. D
Date: 12/7/16
C.N. No. 135664
Prod. | Dwg. No. Z1201-N_4-JC