

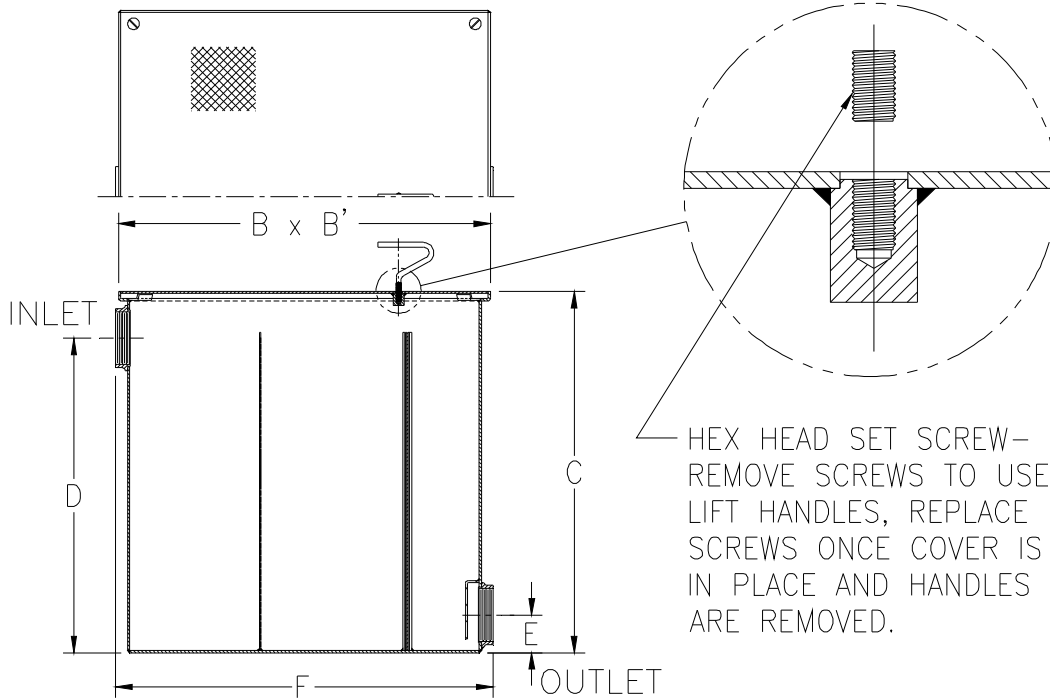


Z1185-152
250 GPM LINT INTERCEPTOR

SPECIFICATION SHEET

TAG _____

Dimensional Data (inches and [mm]) are Subject to Manufacturing Tolerances and Change Without Notice



Size No. of Machines	Inlet/Outlet Size	Flow Rate G.P.M. [LPM]	Approx. Wt. Lbs. [kg]	Dimensions in Inches [mm]					
				B	B'	C	D	E	F
30	6 [152]	250 [1137]	654 [297]	45 [1143]	45 [1143]	38-1/2 [978]	28-1/2 [724]	5 [127]	46 [1168]

ENGINEERING SPECIFICATION: ZURNZ1185-152

Acid Resistant Coated interior and exterior fabricated steel lint interceptor, non-skid secured cover with removable lift handle, aluminum lint intercepting secondary screen assembly, and permanent primary straining baffle with 3/8" [10 mm] diameter perforated holes. Regularly furnished with high inlet and low outlet.

OPTIONS (Check/specify appropriate options)

PREFIXES

- ___ Z Acid Resistant Coated Fabricated Steel*
- ___ ZS All Type 304 Fabricated Stainless Steel

SUFFIXES

- ___-E Acid Resistant Coated interior and exterior fabricated steel extension section (Specify 'C' dimension required for recessed installation).
- ___-RS Aluminum Screen Replacement Assembly

* Regularly furnished unless otherwise specified.