

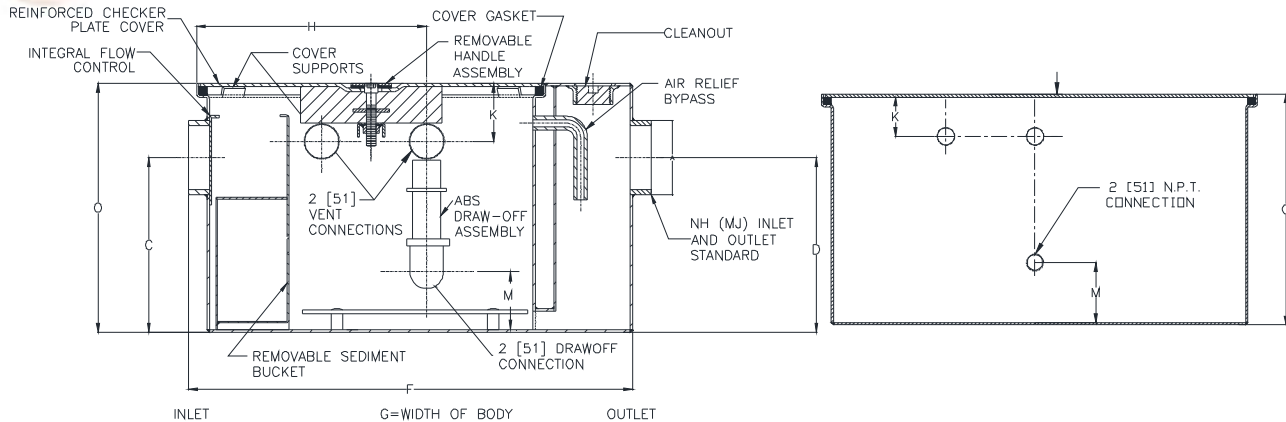


Z1188-166

LARGE CAPACITY OIL INTERCEPTOR WITH HOLDING TANK

SPECIFICATION SHEET
TAG _____

Dimensional Data (inches and [mm]) are Subject to Manufacturing Tolerances and Change Without Notice



Size	Inlet / Outlet Size	Flow Rate GPM [LPM]	Approx. Wt. Lbs. [kg]	Dimensions In Inches / [mm]						
				C/D	F	G	H	K	M	O
75	4 [102]	75 [284]	263 [119]	18-1/2 [470]	35 [889]	28-5/8 [727]	25-3/4 [654]	2-3/4 [70]	6-7/8 [175]	22-3/4 [578]
100		100 [379]	368 [167]	23 [584]	41-3/4 [1060]	33-5/8 [854]	30-1/8 [765]	2-3/4 [70]	11-3/8 [289]	27 [686]
125		125 [473]	641 [291]	24-1/2 [622]	48-1/4 [1226]	40 [1016]	36-5/8 [930]	2-3/4 [70]	12-7/8 [327]	30-1/8 [765]
150		150 [568]	748 [339]	25-1/4 [641]	55 [1397]	41-5/8 [1057]	43-7/8 [1114]	2-3/4 [70]	13-1/8 [333]	30-3/4 [781]
200		200 [757]	896 [406]	29-7/8 [759]	60 [1524]	43-5/8 [1108]	46-5/8 [1184]	2-3/4 [70]	17-3/4 [451]	35-1/2 [902]
250		250 [946]	1108 [503]	36 [914]	70 [1778]	51-5/8 [1311]	56-5/8 [1438]	2-3/4 [70]	23-3/8 [594]	41 [1041]
300	6 [152]	300 [1136]	1785 [810]	39-5/8 [1006]	79 [2007]	58-5/8 [1489]	65-5/8 [1667]	2-3/4 [70]	27 [686]	46-1/4 [1175]
350		350 [1325]	1985 [900]	43-7/8 [1114]	86 [2184]	63-5/8 [1616]	74-1/8 [1883]	2-3/4 [70]	30-3/4 [781]	50-1/2 [1283]
400		400 [1514]	2260 [1025]	47-5/8 [1210]	93 [2362]	70-1/4 [1784]	79-1/8 [2010]	2-3/4 [70]	34-1/2 [876]	54-1/4 [1378]
450		450 [1703]	2415 [1095]	48-5/8 [1235]	99 [2515]	75-1/4 [1911]	85-3/8 [2169]	2-3/4 [70]	35-1/2 [902]	55-1/4 [1403]
500		500 [1893]	2535 [1150]	51-5/8 [1311]	103 [2616]	77-1/4 [1962]	88-3/8 [2245]	2-3/4 [70]	38-1/2 [978]	57-1/4 [1454]

ENGINEERING SPECIFICATION: ZURN Z1188-166

Large Capacity Acid Resistant Coated interior and exterior fabricated steel oil interceptor, visible double wall trap seal, removable combination pressure equalizing/flow diffusing baffle and sediment bucket, horizontal baffle, adjustable oil draw-off, vent connections and independent holding tank. Secured gasketed non-skid cover complete with flow control fitting. Interceptor is regularly furnished with inlet and outlet in high position.

OPTIONS (Check/specify appropriate options)

PREFIXES

- ___ Z Dura-Coated Fabricated Steel*
- ___ ZS All Type 304 Fabricated Stainless Steel w/ Aluminum Cover
- ___ ZSS All type 304 Fabricated Stainless Steel w/ Stainless Steel Cover

SUFFIXES

- ___ -E Acid Resistant Interior and Exterior Fabricated Steel Extension Section. (Specify 'O' Dim. required) for recessed installation.
- ___ -FS Oil Level Float Sensor
- ___ -HD Heavy Duty Reinforced Cover
- ___ -K Anchor flange 1-3/4 [44] down from top and 2 [51] wide. A 3 [76] minimum extension height is required when anchor flange (-K) option is specified. (Specify 'O' Dim. height required.)
- ___ -KC Anchor flange 1-3/4 [44] down from top and 2 [51] wide with clamp collar.
- ___ -L In-line Flow Control Fitting 2,3,4 [51, 76, 102]

REV. A DATE: 12/17/12 C.N. NO. 128599

DWG. NO. 311033 PRODUCT NO. Z1188-166

*REGULARLY FURNISHED UNLESS OTHERWISE SPECIFIED