

**Z1201-N\_4-RYK17**

17 [432] ONE PIECE RYK FOOT SUPPORT  
EZCARRY® ADJUSTABLE HORIZONTAL HIGH PERFORMANCE  
SIPHON JET NO-HUB WATER CLOSET CARRIER SYSTEM

## SPECIFICATION SHEET

TAG \_\_\_\_\_

**PATENT  
PENDING**

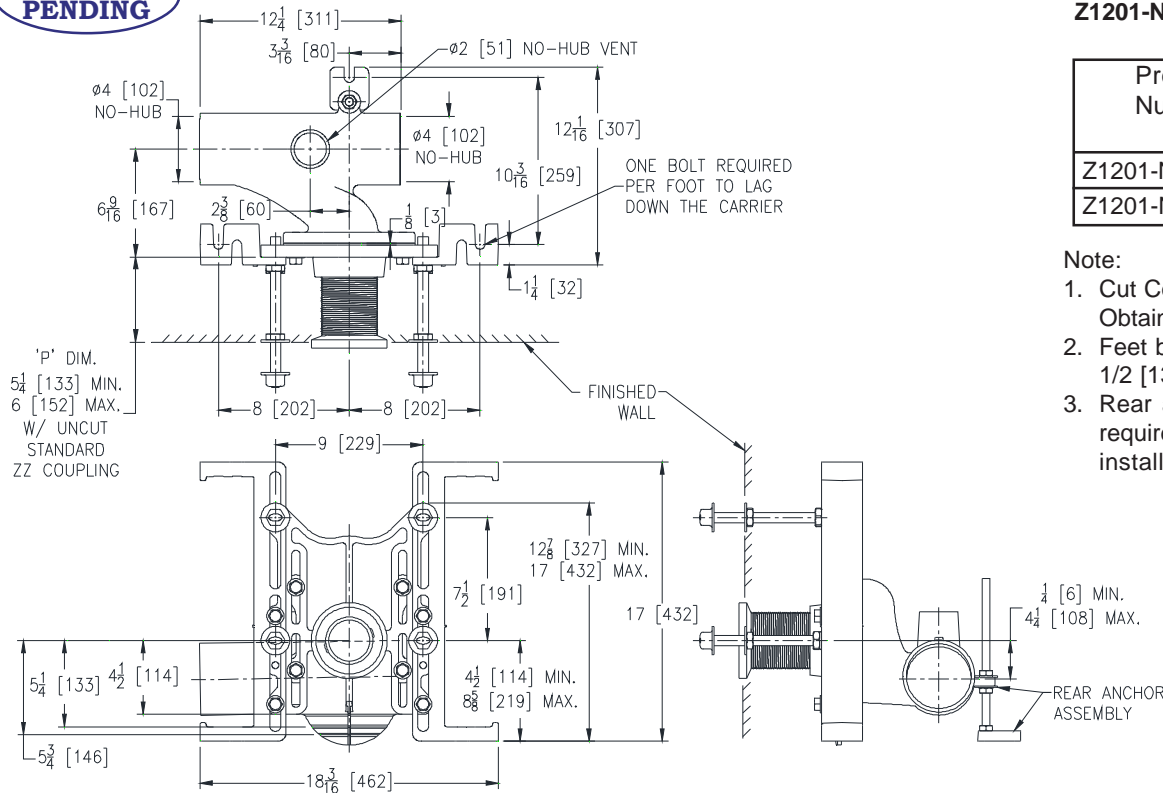
Dimensional Data (inches and [mm]) are Subject to Manufacturing Tolerances and Change Without Notice

### Z1201-NR4-RYK17 Illustrated

Product Number	Approx. Wt. lbs [kg]
Z1201-NL4-RYK17	59 [27]
Z1201-NR4-RYK17	

Note:

1. Cut Coupling, Min. 'P' Dim.  
Obtainable = 2 [51]
2. Feet bolted to floor using min.  
1/2 [13] dia. anchors.
3. Rear anchor assembly  
required for secure  
installation.



**ENGINEERING SPECIFICATION:ZURNZ1201-N\_4-RYK17**

EZCarry® horizontal siphon jet water closet carrier system, with high performance waterway and 4" [102 mm] no-hub connections. System includes Dura-Coated cast iron main fitting with hydro-mechanically optimized sweep and extended 2" [51 mm] vent, adjustable gasketed faceplate, floor mounted 17" [432 mm] one piece RYK foot supports, heavy-duty ½" [13 mm] rear anchor tie down, fixture bolts, trim, and stud protectors, bonded "Neo-Seal" gasket, and corrosion resistant, adjustable 3" [76 mm] dia. X 6" [152 mm] coupling with integral test cap designed to increase flow velocity and line carry. EZCarry® system complies with all requirements of ASME A112.6.1M up to a 500 lbs [227 kg] maximum static load rating.

**OPTIONS** (Check/specify appropriate options)

___ Z1201-NL4-RYK17	4 [102] No-Hub Left Hand Inlet with Flow to Right
___ Z1201-NR4-RYK17	4 [102] No-Hub Right Hand Inlet with Flow to Left

## PREFIXES

___ Z	D.C.C.I. System with Zurn ZZ Adjustable Coupling*
___ ZQ	D.C.C.I. System with NPT Faceplate, Non-Adjustable Coupling

## SUFFIXES

___-A	Auxiliary Support Assembly (For 'P' Dim. Greater than 18 [457])	___-F	Floor Mounted, Back Outlet Fixture Support
___-CC	Corrosion Resistant Cast Iron Coupling (2-1/4 [57] thru 12 [305])	___-G	Galvanized Cast Iron
___-CE	EZ-Set™ Coupling (Available 6 [152] ,12 [305] or longer when specified. Minimum length=5 [127])	___-JC	2 [51] Auxiliary Inlet with 1/8 Bend
___-CL	Custom Length Standard Coupling with Integral Test Cap (Specify Length 4, 8, 10, 12 [102, 203, 254, 305])	___-M	Auxiliary Foot Support (for 'P' Dim. 7 thru 18 [178 thru 457])
___-CS	2-1/4 [57] Polymer Coupling with Integral Test Cap	___-VP	Vandal-Proof Trim
		___-45	Finishing Frame for Siphon Jet System
		___-50	Flush Valve Supply Support for Water Closets

\* Regularly furnished unless otherwise specified.

**Zurn Industries, LLC | Specification Drainage Operation**  
1801 Pittsburgh Avenue, Erie, PA U.S.A. 16502 · Ph. 855-663-9876, Fax 814-454-7929  
In Canada | **Zurn Industries Limited**  
3544 Nashua Drive, Mississauga, Ontario L4V 1L2 · Ph. 905-405-8272, Fax 905-405-1292  
[www.zurn.com](http://www.zurn.com)

Rev. D  
Date: 5/15/2018  
C.N. No. 140027  
Prod. | Dwg. No. Z1201-N 4-RYK17