



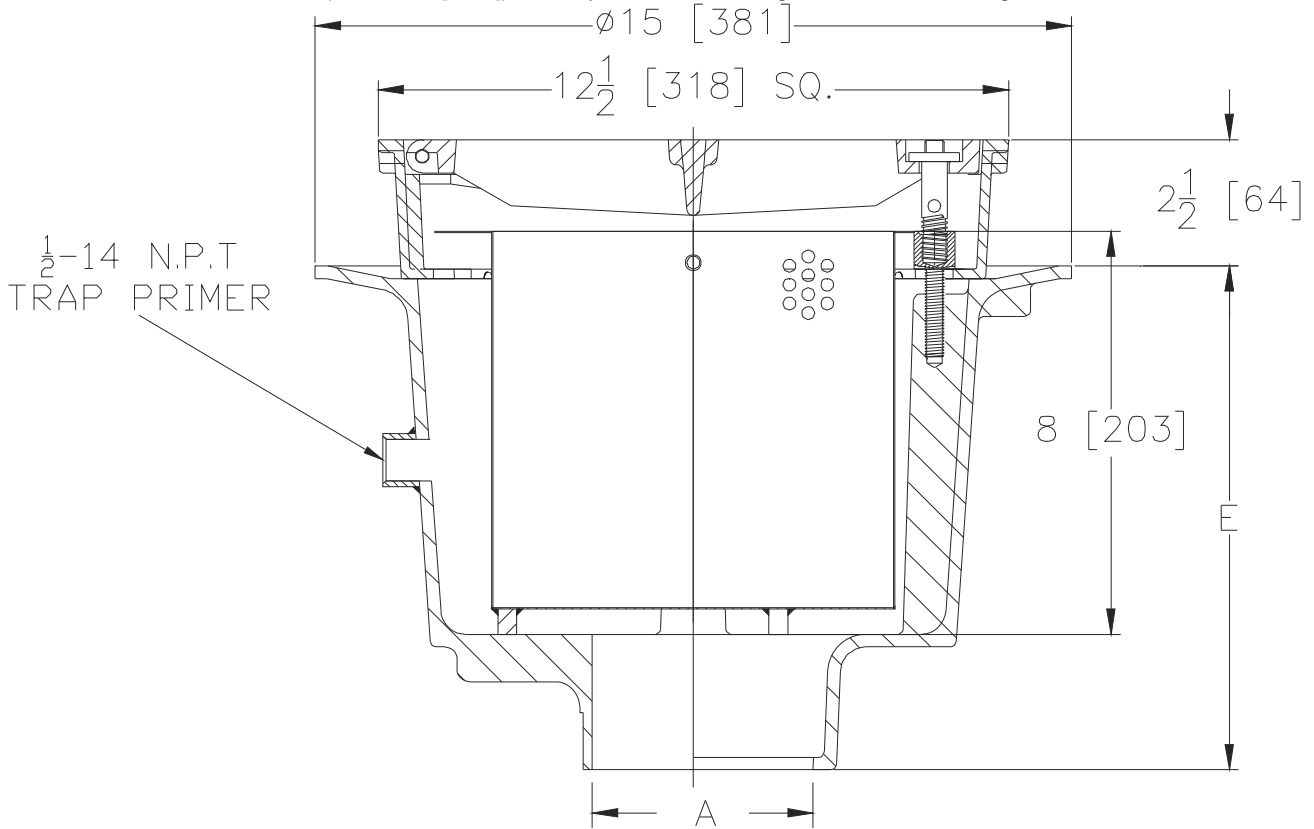
# Z539-94

12-1/2 [318] HEAVY DUTY DEEP SUMP GALVANIZED CAST IRON DRAIN W/ SQUARE HINGED LOCKING GRATE, TRAP PRIMER AND SEDIMENT BUCKET

SPECIFICATION SHEET

TAG \_\_\_\_\_

Dimensional Data (inches and [ mm ]) are Subject to Manufacturing Tolerances and Change Without Notice



A Pipe Size In.	Approx. Wt. Lbs. [kg]	Grate Open Area Sq. In. [cm <sup>2</sup> ]
3-4-6 [76-102-152]	68 [31]	40 [258]

**ENGINEERING SPECIFICATION: ZURN Z539-94**  
 12-1/2 [318] Square top drain. Galvanized cast iron deep sump body with bottom outlet, seepage pan and combination membrane flashing clamp, hinged locking grate with fabricated stainless steel sediment bucket and trap primer.

**OPTIONS** (Check/specify appropriate options)

**PIPE SIZE**

- 3-4-6 [76-102-152]
- 3-4-6 [76-102-152]
- 3-4-6 [76-102-152]

(Specify size/type) **OUTLET**

- \_\_\_ IC Inside Caulk
- \_\_\_ IG Inside Caulk w/Sealtrol Gskt.
- \_\_\_ NH No-Hub

**'E' BODY HT. DIM.**

- 10 [254]
- 10 [254]
- 10 [254]

**PREFIXES**

- \_\_\_ Z D.C.C.I. Body and Grate\*
- \_\_\_ ZB D.C.C.I. Body with Polished Bronze Top (Add 3/16 [5] to 2-1/2 [63] and 3/4 [19] to 12-1/2 [318] Dim.)
- \_\_\_ ZN D.C.C.I. Body with Polished Nickel Bronze Top (Add 3/16 [5] to 2-1/2 [63] and 3/4 [19] to 12-1/2 [318] Dim.)

**SUFFIXES**

- \_\_\_ -TC Neo-Loc Test Cap Gasket  
(2 [51]-4 [102] NL Bottom Outlet Only)

\* Regularly furnished unless otherwise specified.