

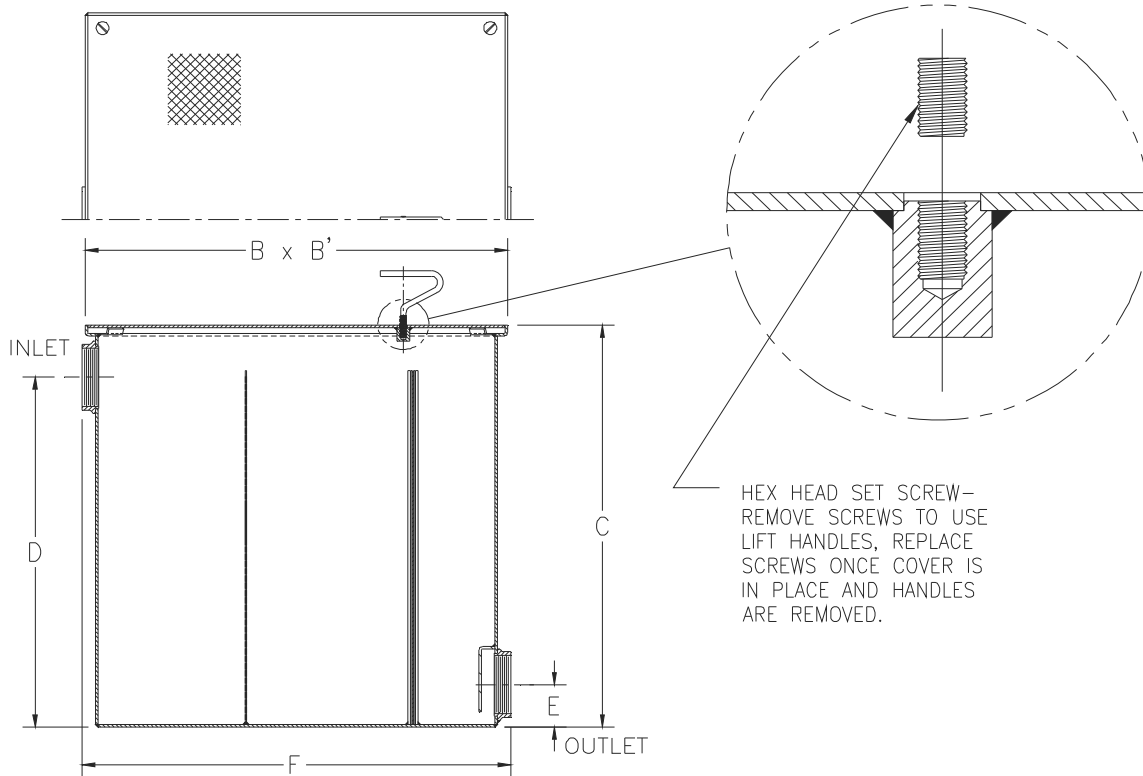


**Z1185-161**  
**CUSTOM LINT INTERCEPTOR FOR 63 GPM**

**SPECIFICATION SHEET**

**TAG** \_\_\_\_\_

Dimensional Data (inches and [ mm ]) are Subject to Manufacturing Tolerances and Change Without Notice



HEX HEAD SET SCREW—  
 REMOVE SCREWS TO USE  
 LIFT HANDLES, REPLACE  
 SCREWS ONCE COVER IS  
 IN PLACE AND HANDLES  
 ARE REMOVED.

Size No. of Machines	Inlet/Outlet Size In. [mm]	Flow Rate G.P.M. [LPM]	Approx. Wt. Lbs. [kg]	Dimensions in Inches [mm]					
				B	B'	C	D	E	F
7	4 [102]	63 [238]	150 [68]	35-3/8 [898]	31-1/2 [800]	13-3/4 [349]	15-3/4 [400]	36-3/8 [924]	

**ENGINEERING SPECIFICATION: ZURN Z1185-161**

Acid Resistant Coated interior and exterior fabricated steel lint interceptor, non-skid secured cover with removable lift handle, aluminum lint intercepting secondary screen assembly, and permanent primary straining baffle with 3/8" [10 mm] diameter perforated holes. Regularly furnished with high inlet and low outlet.

**OPTIONS** (Check/specify appropriate options)

**PREFIXES**

- \_\_\_\_ Z Acid Resistant Coated Fabricated Steel\*
- \_\_\_\_ ZS All Type 304 Fabricated Stainless Steel

**SUFFIXES**

- \_\_\_\_ -E Acid Resistant Coated interior and exterior fabricated steel extension section (Specify 'C' dimension required for recessed installation).
- \_\_\_\_ -RS Aluminum Screen Replacement Assembly

\* Regularly furnished unless otherwise specified.