



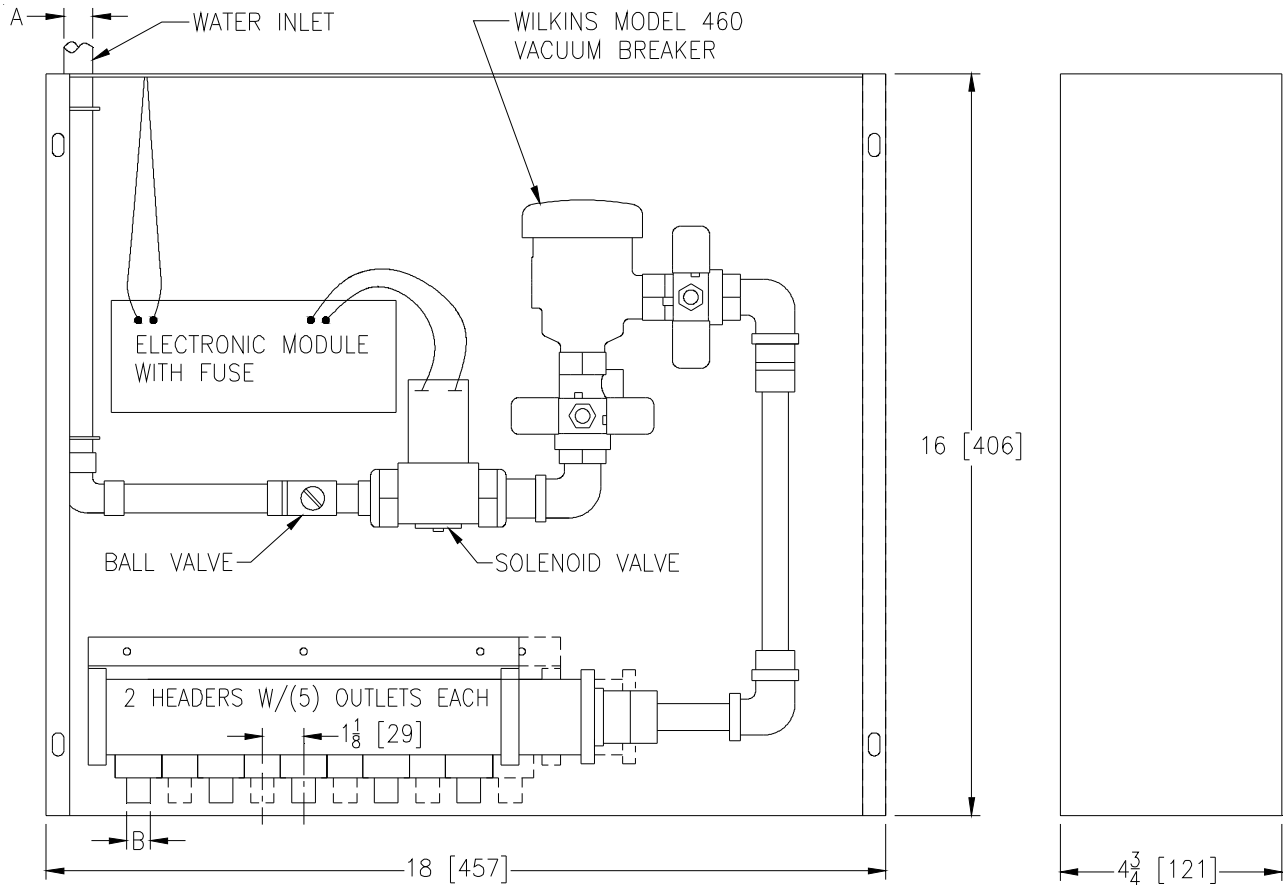
Z1020-82

ELECTRONIC TRAP PRIMER W/ 10 OUTLETS, COPPER WATERWAY, & MODEL 460 VACUUM BREAKER

SPECIFICATION SHEET

TAG _____

Dimensional Data (inches and [mm]) are Subject to Manufacturing Tolerances and Change Without Notice



| Dimensions in Inches [mm] | | Approx. Wt. Lbs.[kg] |
|---------------------------|----------|-------------------------|
| A | B | |
| 1/2 [13] | 1/2 [13] | 15 [7] |

ENGINEERING SPECIFICATION: ZURN Z1020-82

Electronic trap primer programmed as standard to provide a six second water injection to traps every twenty-four hours*, complete with galvanized steel combination surface or recessed mount box and cover, 1/2" [13mm] solder copper inlet connection, brass ball type stop valve, slow closing 24 VAC solenoid valve with integral strainer, 120 - 24 VAC transformer, Wilkins Model 460 vacuum breaker, copper waterway, and two anti-scaling multi-port manifolds with five 1/2" [13mm] Female N.P.T. outlet connections each.

SUFFIXES

- ____-DU4 Additional distribution units with copper waterway (Specify quantity)
- ____-VP Vandal-Proof secured cover with vandal-proof driver.

* Regularly furnished unless otherwise specified.