



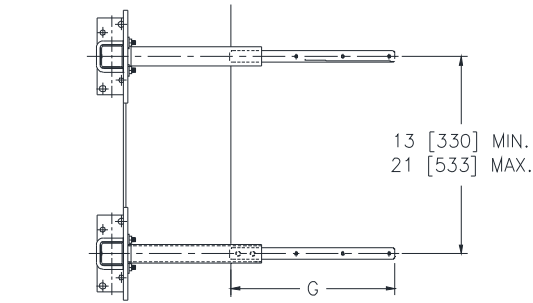
Z1231-EZR-80

CONCEALED ARM CARRIER SYSTEM FOR WALL HUNG LAVATORY WITH RIGID UPRIGHTS, ADJUSTABLE HEADER PLATES & 11-5/8" [295] SLEEVE LENGTH

SPECIFICATION SHEET

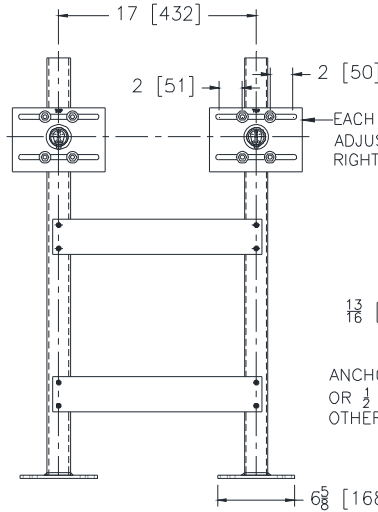
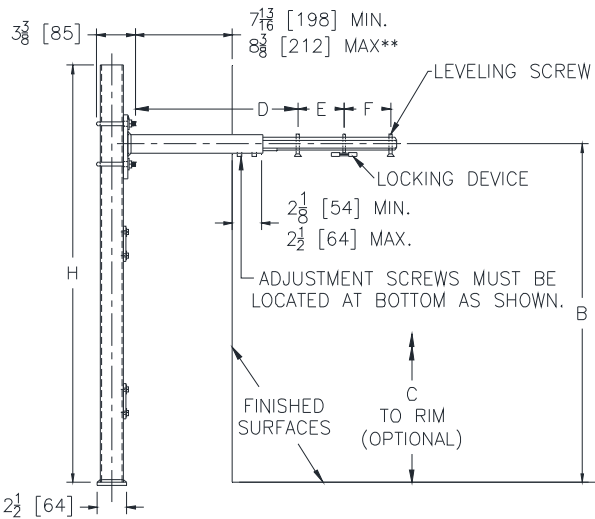
TAG _____

Dimensional Data (inches and [mm]) are Subject to Manufacturing Tolerances and Change Without Notice

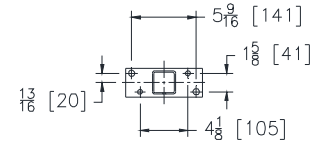


Note:
Dimensional data for letter dimensions depends upon fixture type and manufacturer. See Zurn Carrier/Fixture Rough-In information at www.zurn.com for specific rough-in dimensions

Product No.	Approx. Wt. Lbs. [kg]
Z1231-EZR-80	45 [20]



EACH HEADER PLATE IS HORIZONTALLY ADJUSTABLE 2 [51] IN EITHER LEFT OR RIGHT DIRECTION.



ANCHOR HOLES FOR EITHER 3/8 [10] OR 1/2 [13] ANCHORS (FURNISHED BY OTHERS).

ENGINEERING SPECIFICATION: ZURN Z1231-EZR-80

Wall Hung Lavatory Support System complete with Dura-Coated upright supports made from structural carbon-steel square tubing, conforming to ASTM A500 Grade C standards, with welded steel plate mounting feet featuring separate bolt patterns for using either 3/8" [10mm] or 1/2" [13mm] anchors, both meeting OSHPD spacing requirements. Includes lower and upper Rigid installation plates, for accurate upright spacing. Individual slotted header plates with integral 11-5/8" [295mm] welded arm sleeves provide 2" [51 mm] of additional horizontal adjustment per plate allowing for a total horizontal adjustment range of 13" [330mm] to 21" [533mm]. Arms are Dura-Coated cast iron and include leveling screws and soft-set elastomeric locking devices. Uprights, Rigid installation plates, and header plates are all factory assembled for easy installation. Carrier system exceeds load and deflection requirements when tested in accordance to ASME Standard A112.6.1M at any adjustment position.

OPTIONS (Check/specify appropriate options)

PREFIXES

___ Z Dura-Coated System with Support Plate*

SUFFIXES

___ -AL	Adapter Lug	___ -E6	Concealed Arm Escutcheons 6 [152] Long
___ -CU	Floor to Ceiling Upright (Specify Height Required)	___ -WL	Waste Line Sleeve
___ -D	Back to Back System	___ -WS	Wall Support Valve Plate (Specify Valve Name and Number)
___ -E2	Concealed Arm Escutcheons 2 [51] Long	___ -79	Paraplegic Rough-In
___ -E4	Concealed Arm Escutcheons 4 [102] Long		

* Regularly furnished unless otherwise specified.