



# Z1187-SI-122

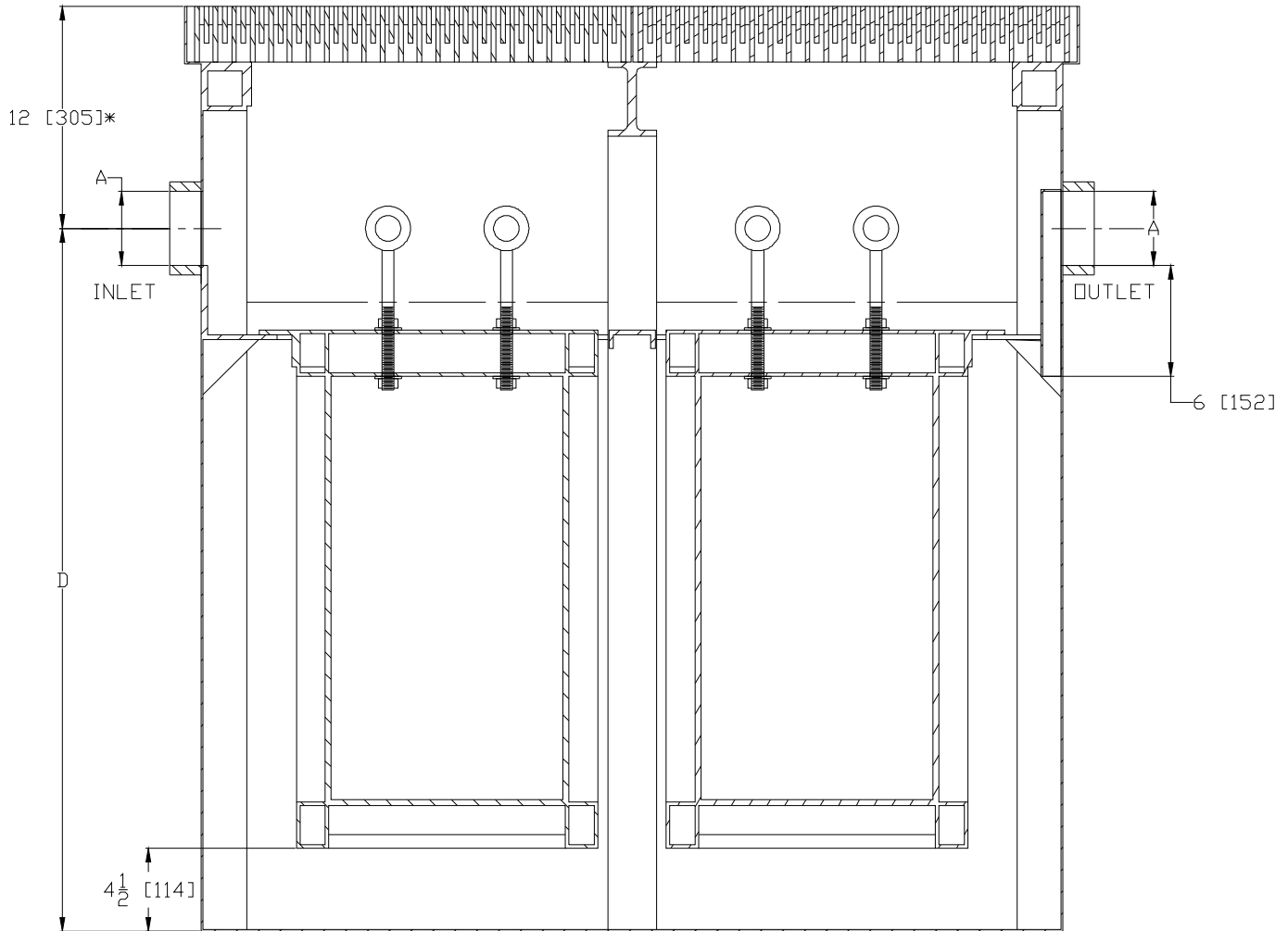
## PULP INTERCEPTOR W/HEAVY-DUTY GRATES

SPECIFICATION SHEET

TAG \_\_\_\_\_

Dimensional Data (inches and [ mm ]) are Subject to Manufacturing Tolerances and Change Without Notice

\*12 [305] REGULARLY FURNISHED  
SPECIFY DIMENSION IF HIGHER  
OR LOWER IS REQUIRED



Size	Flow G.P.M. [L] (Max.)	A Pipe Size	L	D	Capacity Gal. [L] (Static)	No. of Covers	Width	Approx. Wt. Lbs. [Kg]
150	150 [568]	4 [102]	48 [1219]	38 [965]	360 [1363]	2	48 [1219]	2106 [955]

### ENGINEERING SPECIFICATION: ZURN Z1187-SI-122

Acid Resistant Coated interior and exterior fabricated steel pulp interceptor with threaded inlet and outlet, complete with removable heavy-duty grates rated at 16,000 lbs. [7257 kg.] maximum safe load and removable perforated buckets.

### OPTIONS (Check/specify appropriate options)

#### PREFIXES

- \_\_\_ Z Acid Resistant Coated Fabricated Steel With Ductile Iron Grates
- \_\_\_ ZS Acid Resistant Coated Fabricated Steel With Type 304 Stainless Steel

\* Regularly furnished unless otherwise specified.