



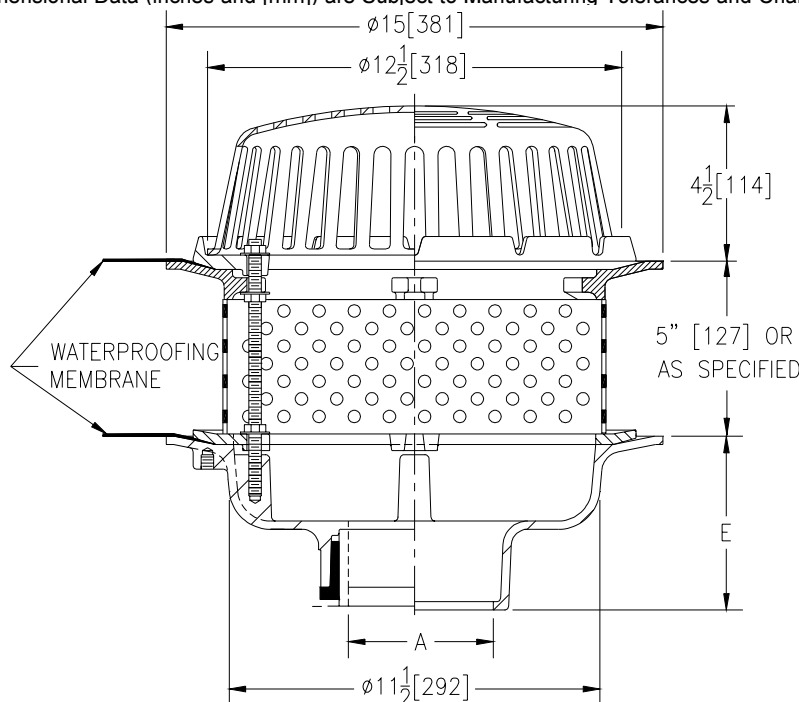
# Z-100-126

## 15" DIAMETER MAIN ROOF DRAIN WITH STAINLESS EXTENSION, STATIC EXTENSION AND LOW SILHOUETTE DOME

SPECIFICATION SHEET

TAG \_\_\_\_\_

Dimensional Data (inches and [mm]) are Subject to Manufacturing Tolerances and Change Without Notice



A- Pipe Size In.	Approx. Wt. Lbs. [kg]	Dome Open Area Sq. In. [cm <sup>2</sup> ]
2-3-4 [50-75-100]	26 [12]	103 [665]
5-6 [125-150]	27 [12]	
8 [200]	28 [13]	
10 [250]	30 [14]	

**ENGINEERING SPECIFICATION:** ZURN Z-100-126 15 [381] Diameter roof drain. Dura-Coated cast iron body with secondary clamp, stainless steel perforated extension, static extension and combination membrane flashing clamp/gravel guard and low silhouette Poly-Dome.

**OPTIONS** (Check/specify appropriate options)

**PIPE SIZE**

- 2 thru 6, 8, 10 [50 thru 150, 200, 250]
- 2 thru 6, 8, 10 [50 thru 150, 200, 250]
- 2 thru 6, 8, 10 [50 thru 150, 200, 250]
- 2, 3, 4 [50, 75, 100]

(Specify size/type) **OUTLET**

- \_\_\_\_\_ IC Inside Caulk
- \_\_\_\_\_ IP Threaded
- \_\_\_\_\_ NH No-Hub
- \_\_\_\_\_ NL Neo-Loc

**E BODY HT. DIM.**

- 5 1/4 [133]
- 3 3/4 [95]
- 5 1/4 [133]
- 4 5/8 [117]

**PREFIXES**

- \_\_\_\_\_ Z- D.C.C.I. Body with Poly-Dome\*
- \_\_\_\_\_ ZA- D.C.C.I. Body with 6 3/4 [171] High Aluminum Dome
- \_\_\_\_\_ ZC- D.C.C.I. Body with Cast Iron Dome
- \_\_\_\_\_ ZRB- D.C.C.I. Body with Plain Bronze Dome

**SUFFIXES**

- |  |  |
|--|--|
| _____ -AC Angular Underdeck Clamp                        | _____ -VP Vandal Proof Secured Top                   |
| _____ -AR Acid Resistant Epoxy Coated Finish             | _____ -W2 2 [51] Internal Water Dam                  |
| _____ -AW 3/4 [19] to 4 [102] Adj. Water Level Regulator | _____ -W3 3 [76] Internal Water Dam                  |
| _____ -BS Bronze Mesh Screen Over Dome                   | _____ -W4 4 [102] Internal Water Dam                 |
| _____ -C Underdeck Clamp                                 | _____ -XJ Vertical Expansion Joint (See Z-190)       |
| _____ -DX Dex-o-tex Flange                               | _____ -6 6 3/4 [171] High Aluminum Dome              |
| _____ -EA Adjustable Extension Assembly                  | _____ (148 Sq. In. [955 cm <sup>2</sup> ] Open Area) |
| _____ 1 3/4 [44] thru 3 1/2 [89]                         | _____ -84 Stainless Steel Perforated Gravel Guard    |
| _____ -FG Flush Grate                                    | _____ -89 2 [51] High External Water Dam             |
| _____ -G Galvanized Cast Iron                            | _____ -90 90° Threaded Side Outlet Body              |
| _____ -GD Galvanized Cast Iron Dome                      |  |
| _____ -R Roof Sump Receiver                              |  |
| _____ -SS Stainless Steel Mesh Screen Over Dome          |  |

\*REGULARLY FURNISHED UNLESS OTHERWISE SPECIFIED

<b>REV.</b>	<b>DATE: 12/12/95</b>	<b>C.N. NO. 73665</b>
<b>DWG. NO. P-14272 PRODUCT NO. Z-100-126</b>		