



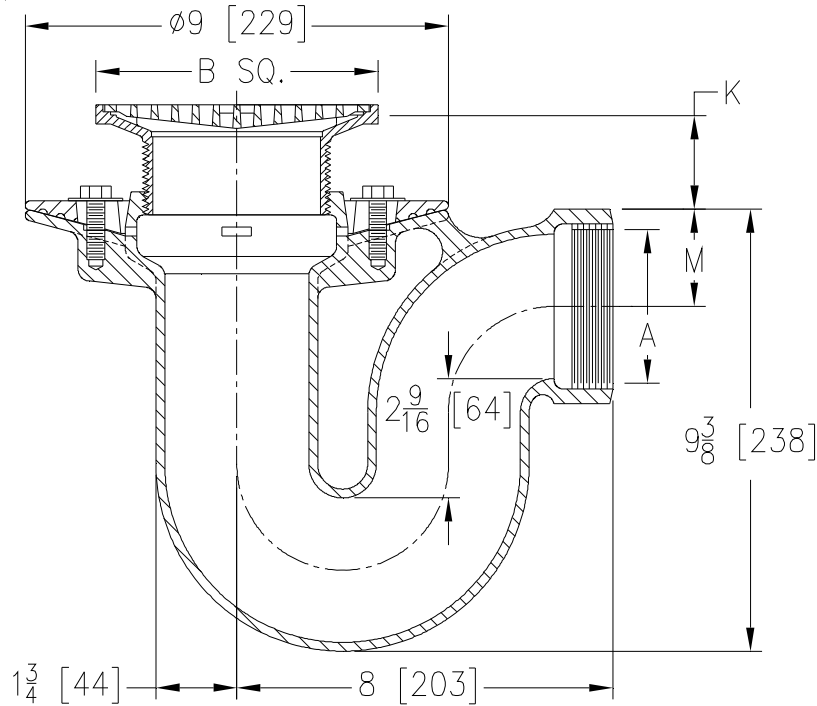
# Z453S-C

## DEEP SEAL TRAP DRAIN W/ "TYPE S" STRAINER AND CLAMP COLLAR

SPECIFICATION SHEET

TAG \_\_\_\_\_

Dimensional Data (inches and [ mm ]) are Subject to Manufacturing Tolerances and Change Without Notice



Dimensions In Inches [mm]				Approx. Wt. Lbs. [kg]	Strainer Open Area Sq. In. [cm <sup>2</sup> ]
A Pipe Size	B Square Top Size	K			
		Min.	Max.		
2, 3 [51, 75] 4 [102]	5 [127]	3/4 [19]	1-7/8 [48]	2-1/8 [54]	30 [14] 9 [58]
2, 3 [51, 76] 4 [102]	6 [152]	1-1/8 [29]	2-1/8 [54]	2-1/8 [54]	31 [14] 32 [15] 13 [83]
2, 3 [51, 76] 4 [102]	7 [178]	1-3/8 [35]	2-1/2 [64]	2-1/8 [54]	33 [15] 21 [135]
4 [102]	8 [203]	1-3/8 [35]	2-1/2 [64]	2-3/4 [70]	33 [15] 28 [180]

### ENGINEERING SPECIFICATION:

**ZURNZN453S-C**  
 Deep Seal trap floor and shower drain, Dura-Coated cast iron body with uniform diameter integral trap, clamp collar, side outlet, seepage pan, and adjustable "TYPE S" polished, nickel bronze square strainer.

### OPTIONS (Check/specify appropriate options)

#### PIPE SIZE

2, 3, 4 [51, 76, 102]  
 2, 3, 4 [51, 76, 102]

#### (Specify size/type) OUTLET

\_\_\_\_ IP Threaded  
 \_\_\_\_ NH No-Hub

#### PREFIXES

\_\_\_\_ ZB D.C.C.I. Body Assembly w/ Polished Bronze Top  
 \_\_\_\_ ZN D.C.C.I. Body Assembly w/ Polished Nickel Bronze Top\*

#### SUFFIXES

\_\_\_\_ -G Galvanized Cast Iron  
 \_\_\_\_ -P Trap Primer Connection (Specify 1/2 [13] or 3/4 [19])  
 \_\_\_\_ -PC Protective Cover  
 \_\_\_\_ -U 1 - 3 [25 - 76] High Extension Adapter  
 \_\_\_\_ -VP Vandal-Proof Secured Top  
 \_\_\_\_ -Y Sediment Bucket

\* Regularly furnished unless otherwise specified.