



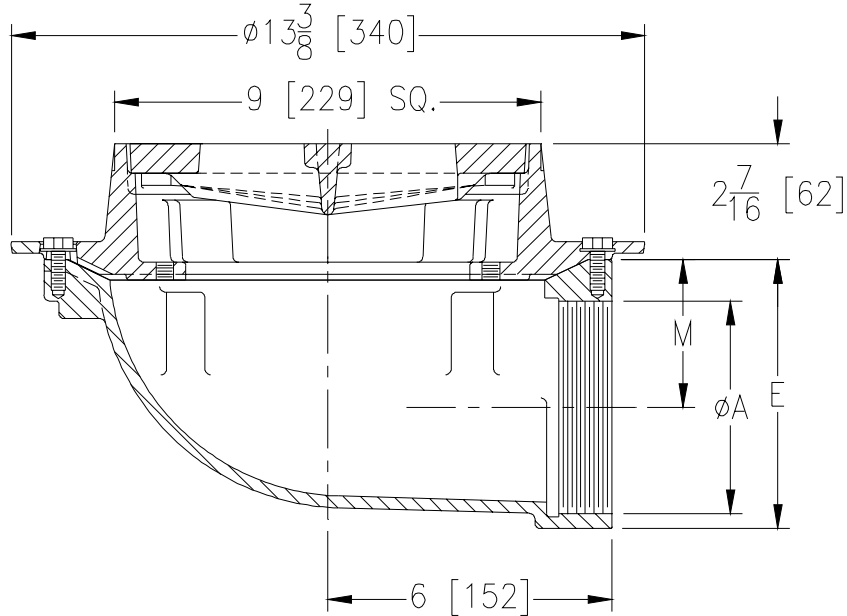
# Z609-90

## 9 [229] SQUARE HEAVY-DUTY DRAIN WITH SIDE OUTLET

SPECIFICATION SHEET

TAG \_\_\_\_\_

Dimensional Data (inches and [ mm ]) are Subject to Manufacturing Tolerances and Change Without Notice



A Pipe Size	M	Approx. Wt. Lbs. [kg]	Grate Open Area Sq. In. [cm <sup>2</sup> ]
2 [50]	4 1/8 [105]	30 [14]	14 [90]
3 [75]	3 5/8 [92]		
4 [100]	3 1/8 [79]		

**ENGINEERING SPECIFICATION: ZURN Z609-90**  
 9 [229] Square Top Drain, Dura-Coated cast iron body with side outlet, seepage pan, and heavy-duty cast iron anti-tilt slotted grate and combination membrane flashing clamp and frame.

**OPTIONS** (Check/specify appropriate options)

**PIPE SIZE**

2 thru 4 [51 thru 102]

(Specify size/type) **OUTLET**

\_\_\_\_ IP    Threaded

**'E' BODY HT. DIM.**

5 11/16 [145]

**PREFIXES**

- \_\_\_\_ Z    D.C.C.I. Body and Top\*
- \_\_\_\_ ZB    D.C.C.I. Body w/Polished Bronze Top (Add 3/16 [5] to 2 7/16 [62] Dim.)
- \_\_\_\_ ZN    D.C.C.I. Body w/Polished Nickel Bronze Top (Add 3/16 [5] to 2 7/16 [62] Dim.)

**SUFFIXES**

- |  |  |
|--|--|
| <ul style="list-style-type: none"> <li>____ -AR    Acid Resistant Epoxy Coated Cast Iron</li> <li>____ -DG    Duresist Grate</li> <li>____ -F     2 [51] High Extension</li> <li>____ -G     Galvanized Cast Iron</li> <li>____ -GG    Galvanized Grate</li> </ul> | <ul style="list-style-type: none"> <li>____ -H     Hinged Grate</li> <li>____ -HL    Hinged Locking Grate</li> <li>____ -SC    Solid Cover</li> <li>____ -TS    Top Secured With Slotted Screws</li> <li>____ -VP    Vandal-Proof Secured Top</li> </ul> |
|--|--|

<b>REV.</b>	<b>DATE: 04/7/05</b>	<b>C.N. NO. 93198</b>
<b>DWG. NO. 82321</b>	<b>PRODUCT NO. Z609-90</b>	

\*REGULARLY FURNISHED UNLESS OTHERWISE SPECIFIED